

# YILMAZ REDÜKTÖR A.Ş.

1958 yılında Sn. Mesut Yılmaz tarafından kurulan YILMAZ REDÜKTÖR, kararlı üretim kalitesi, iş anlayışındaki disiplini, doğru stratejileri ve tutarlı vizyonu ile ülkesinde kısa sürede liderliğe yerleşmiş, günümüze kadar liderliğini korumuş ve günümüzde Dünya'da da isminden bahsedilir bir marka olmayı başarmıştır.



Kurucumuz: Mesut YILMAZ  
Our founder:

YILMAZ REDÜKTÖR yeni ürünlerine yılların birikimini yansıtırken, yeni teknolojiler ve mühendislik yatırımları ile ürünlerini sizlerin makina ve tesislerinizin ihtiyaçlarına en iyi cevap verebilecek şekilde geliştirmekte ve güvenilir iş ortağınız olmayı sürdürmektedir.

Pazarlara sunulan ürünlerimiz hafif sanayiden ağır sanayiye binlerce tesiste güvenle hizmet vermektedir. Avrupa'dan uzak doğuya 7 kıtaya ihracat yapan firmamız satış öncesi ve sonrası teknik destek ve servisleri ile sizlerin hizmetindedir.

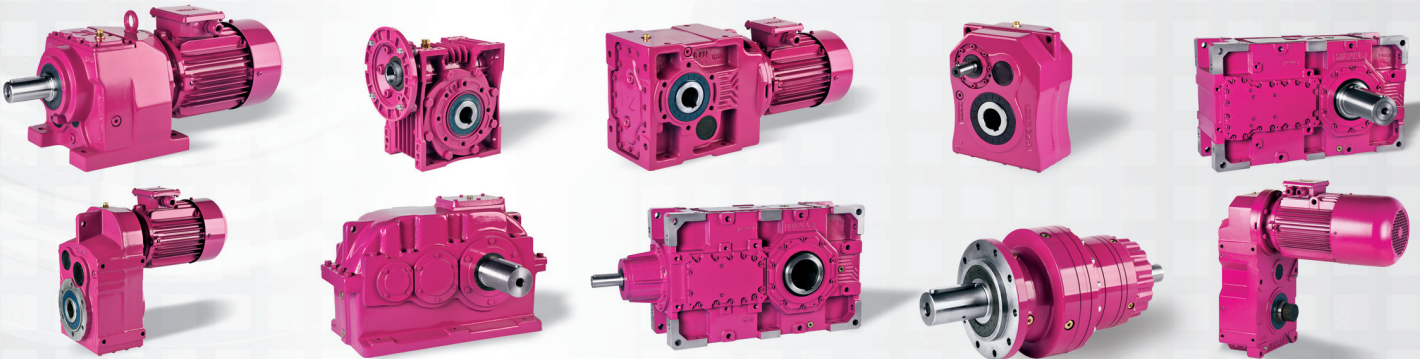
YILMAZ REDUKTOR was founded in the year 1958 by Mr. Mesut Yılmaz and he has managed to be the leader gearbox manufacturer in his country in a short time because of his stable production quality, work discipline, applied right strategies and consistent visions. Today YILMAZ REDUKTOR is the leader

company for gearbox manufacturing in Turkey and the name of YILMAZ is getting well known in the world.

YILMAZ REDUKTOR is developing best fitting products to your machines and foundations requirements by using its experience and investments in new technologies as well as engineering. We are and will remain your reliable partner.

The products we are supplying are running in many different industries also in heavy industries with high reliability. Our company is supplying products to 7 continents and we are ready to serve our customers before and after sales.

Bu katalogta verilen bilgileri, önceden haber vermeksizin kısmen veya tamamen değiştirmeye veya iptal etme hakkını saklı tutunuz.  
We reserve the right to make changes in the catalogue without giving information.  
Das ganze Katalog oder ein Teil des Kataloges kann verändert werden, ohne in Kenntnis zu setzen.

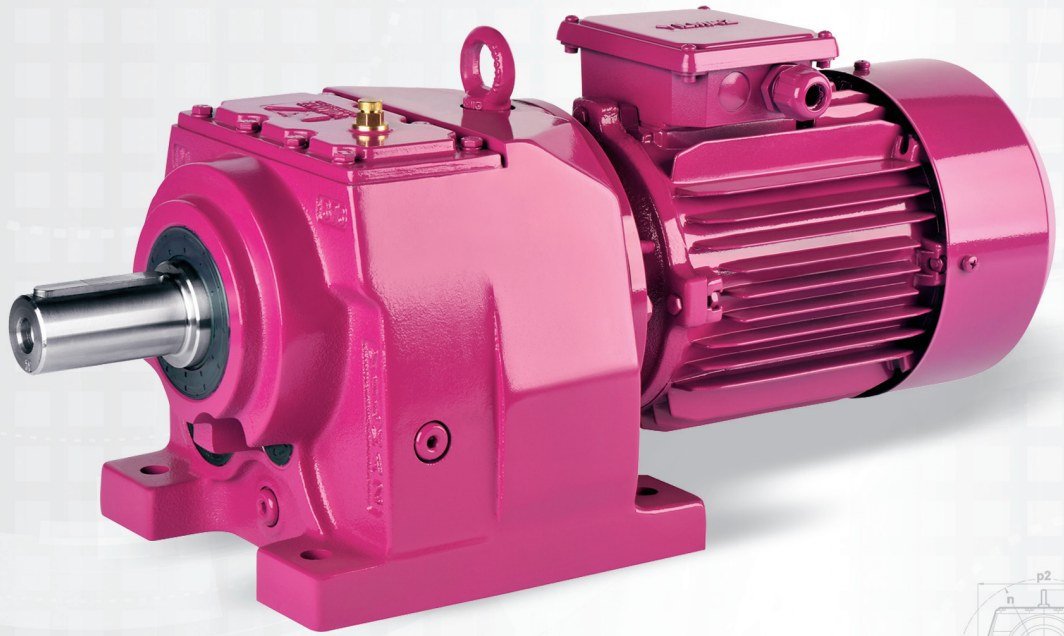


# M

NR

## Serisi Series

### Helisel Monoblok Redüktörler Helical Monoblock Gearboxes

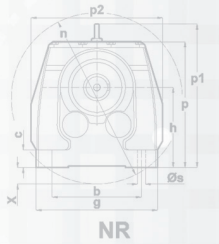


**13 farklı büyüklükte,**

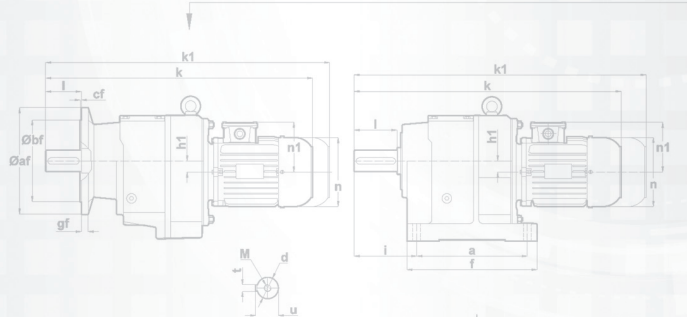
Moment Aralığı : 50-18.000 Nm  
Devir Aralığı : 0,1-500d/dak  
Kademe Sayısı : 1-6

**13 different sizes,**

Torque Range : 50-18.000 Nm  
Speed Range : 0,1-500 rpm  
Stage Number : 1-6



NR

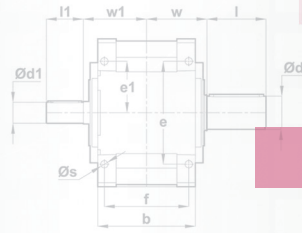
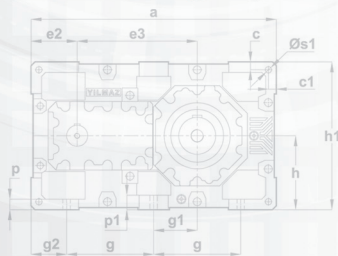
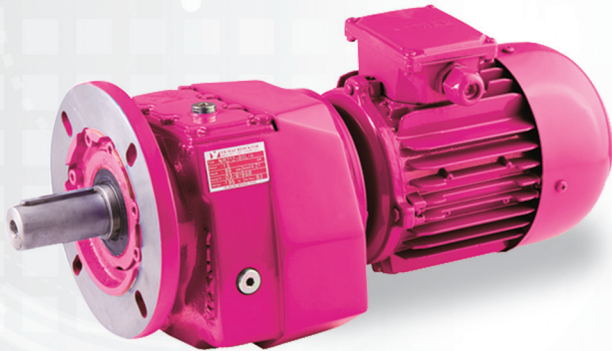
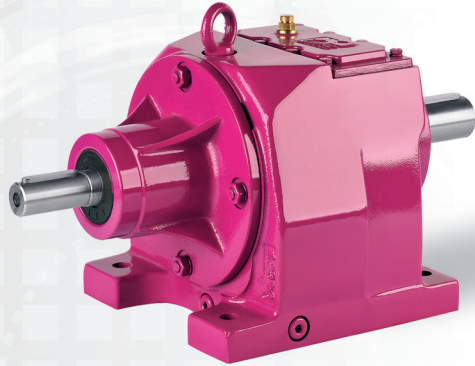
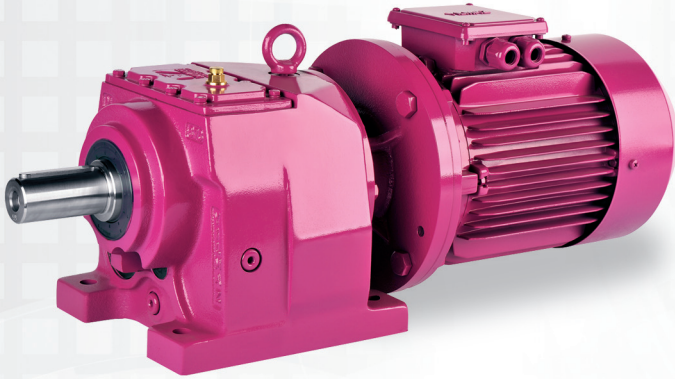
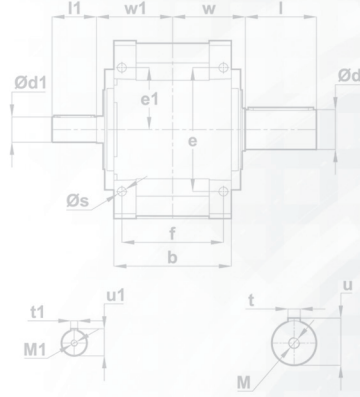
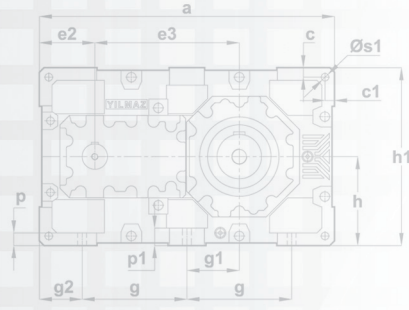


MR

# M

## Serisi

### Series



## M Serisi

M Serisi Redüktörler bilinen YILMAZ REDÜKTÖR kalitesindeki monoblok gövdeli helisel dişli redüktörlerdir. M Serileri aynı gövde büyüklüğündeki farklı ürünlere göre daha yüksek tork değerinde, daha sessiz ve daha ekonomiktir.

Gövde üzerindeki ayak bağlantı delikleri veya flanş bağlantısı ile makineye montajı yapılır. Çıkış milleri olarak üretilmektedir.

### M Serisi Redüktörlerin Avantajları

- 6 Kademe kadar redüksiyon artırımı seçeneği,
- Standart IEC B5 ve B14 motor bağlayabilme imkanı,
- Elektromanyetik frenli motorlarla seçilebilmesi,
- Yüksek ömürlü rulman kullanımı
- GG20 ve GGG40 dökme demir gövde malzemesi,
- 58-62 HRC değerleri arasında sertleştirilmiş ve taşlanmış dişliler.

## M Series

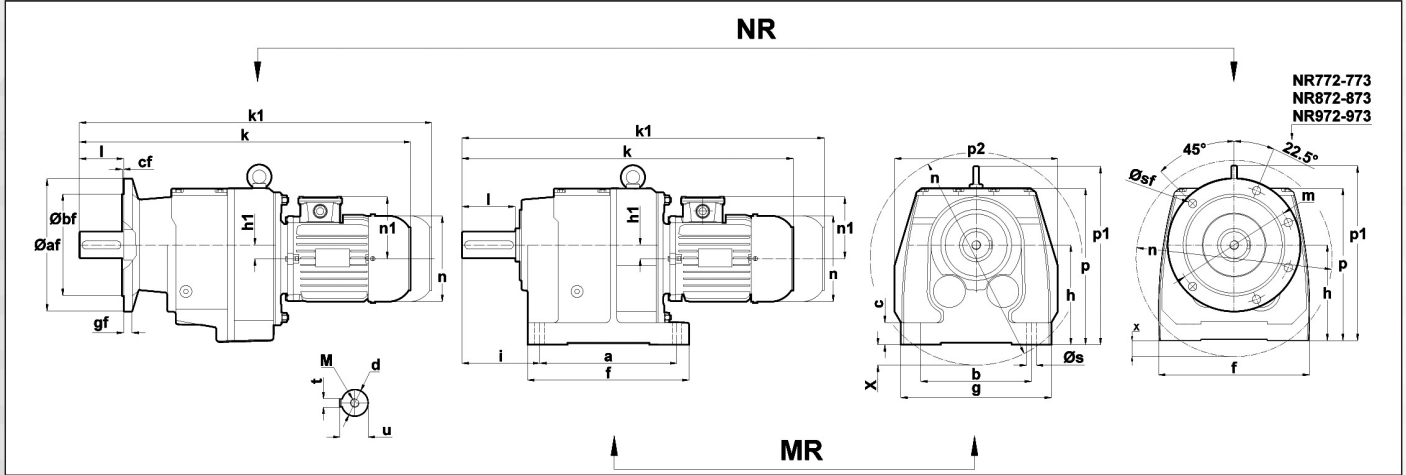
M Series are helical spur geared gearboxes with monoblock housing and well-known quality of YILMAZ REDÜKTÖR. M Series are more powerful, more noiseless and economical than same sized gearboxes which can be compared with different products.

The gearbox can be connected to the machine by using the foot or flange on the gearbox. Has solid output shaft.

### The advantages of M Series gearboxes:

- Monoblock housing design,
- Two staged and three staged gearboxes are available in same housings with high ratios and output torques,
- Increasing the transmission until 6 stages,
- Standard IEC B5 or B14 motor connection options,
- Electromagnetic braked motors,
- Using bearings with long lifetime,
- Cast iron housing from GG20 and GGG40 materials,
- Hardened and grinded gears with hardness between 58 to 62 HRC.

# M Serisi Series



2-3 Kademeli Redüktörler ölçü tablosudur.  
Dimensions table of gearboxes with 2-3 stages.

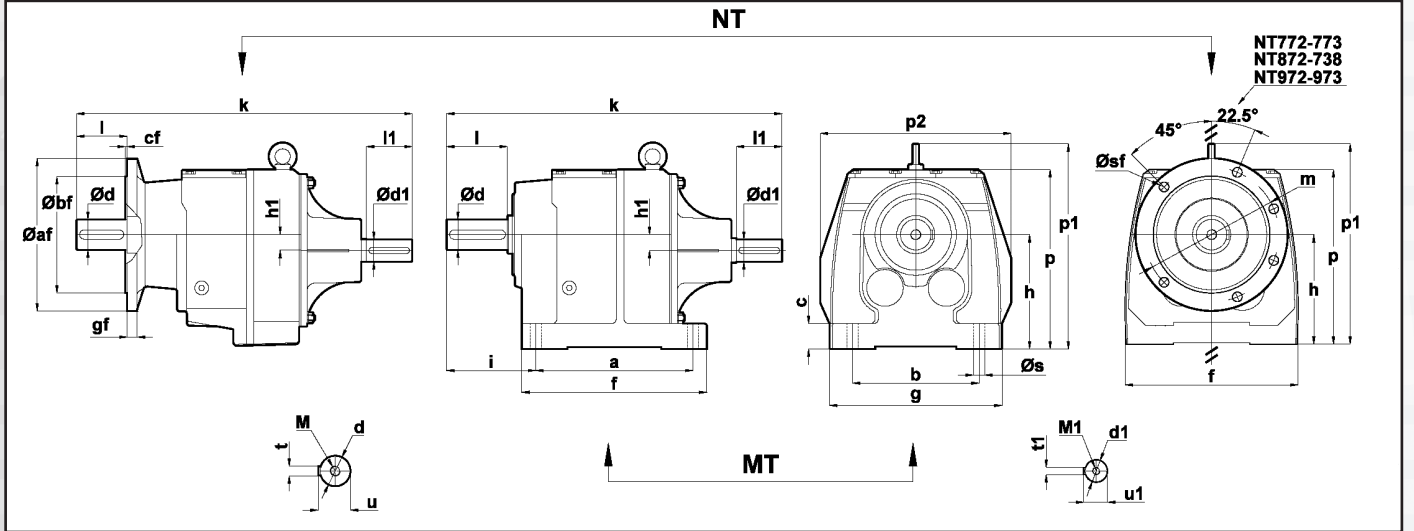
MR NR	Ayaklı Ölçüler Dimensions of Foot Mounting					Flanşlı Ölçüler Dimensions of Flange Mounting					Ortak Ölçüler Dimensions of both Gearbox Types													
	a b	c f	i	s g	p2	af bf	cf	gf	sf m	f1	p	p1	h h1	X	k	k1	n	n1	d	u	t	l	M	
MR002 NR002 NR003	63	100	13	77	9	130	-	140	3	10	130	132	75	-	368	421	121	97	20 (k6)	22.5	6	40	M6	
	71													5	387	507	138	111						
	80													14	415	535	156	118						
	90S													24	443	568	176	126						
	90L													24	483	608	176	126						
MR102 NR102 NR103	63	130	18	80	9	153	-	160	4	10	153	155	90	-	394	447	121	97	25 (k6)	28	8	50	M10	
	71													-	413	533	138	111						
	80													-	442	562	156	118						
	90S													10	471	596	176	126						
	90L													10	596	633	176	126						
MR172 NR172 NR173	63	130	18	72.5	9.5	145	165	160	4	10	165	151	90	-	395	448	121	97	25 (k6)	28	8	50	M10	
	71													-	414	534	138	111						
	80													-	442	562	156	118						
	90S													6	470	595	176	126						
	90L													6	510	635	176	126						
	100L													16	536	671	194	135						
	112M													28	559	694	218	146						
MR202 NR202 NR203	63	165	25	99	11.5	190	-	200	4	15	190	191	115	-	442	495	121	97	30 (k6)	33	8	60	M10	
	71													-	461	581	138	111						
	80													-	489	609	156	118						
	90S													-	517	642	176	126						
	90L													-	542	667	176	126						
	100L													-	583	718	194	135						
	112M													10	606	741	218	146						
MR272 NR272 NR273	63	165	24	96.5	11.5	190	202	200	4	15	202	192	115	-	443	496	121	97	35 (k6)	38	10	70	M12	
	71													-	462	582	138	111						
	80													-	490	610	156	118						
	90S													-	518	643	176	126						
	90L													-	543	668	176	126						
	100L													-	584	719	194	135						
	112M													9	607	742	218	146						
MR282 NR282 NR283	71	195	29	103	14	210	220	250	4	15	220	218	265	130	-	479	599	138	111	35 (k6)	38	10	70	M12
	80														-	507	627	156	118					
	90S														-	537	662	176	126					
	90L														-	562	687	176	126					
	100L														-	602	737	194	135					
	112M														-	625	760	218	146					
	132S														-	679	824	257	168					
132M	14	717	862	257	168																			

# Helisel Monoblok Redüktörler

## Helical Monoblock Gearboxes

MR NR	Ayaklı Ölçüler Dimensions of Foot Mounting					Flanşlı Ölçüler Dimensions of Flange Mounting					Ortak Ölçüler Dimensions of both Gearbox Types													
	a b	c f	i	s g	p2	af bf	cf	gf	sf m	f1	p	p1	h h1	X	k	k1	n	n1	d	u	t	l	M	
MR372 NR372 NR373	71	205 170	30 245	115	16 230	239	250 180	4	14	14 215	239	232	287	140 9.2	-	500	620	138	111	40 (k6)	43	12	80	M16
	80														-	528	648	156	118					
	90S														-	558	683	176	126					
	90L														-	583	708	176	126					
	100L														-	623	758	194	135					
	112M														-	646	781	218	146					
	132S														2	700	845	257	168					
132M	30	738	883	257	168																			
MR472 NR472 NR473	80	260 215	45 310	139	18 290	306	300 230	4	16	14 265	306	296	352	180 10.4	-	596	716	156	118	50 (k6)	53.5	14	100	M16
	90S														-	624	749	176	126					
	90L														-	649	774	176	126					
	100L														-	688	823	194	135					
	112M														-	713	848	218	146					
	132S														-	762	907	257	168					
	132M														-	800	945	257	168					
	160M														-	875	1045	310	225					
	160L														-	919	1089	310	225					
	180M														11	936	1106	348	241					
	180L														11	974	1144	348	241					
MR572 NR572 NR573	100L	310 250	50 365	160	22 340	366	350 250	4	20	18 300	362	367	421	225 10.7	-	745	880	194	135	60 (m6)	64	18	120	M20
	112M														-	768	903	218	146					
	132S														-	822	967	257	168					
	132M														-	860	1005	257	168					
	160M														-	935	1105	310	225					
	160L														-	979	1149	310	225					
	180M														-	995	1165	348	241					
	180L														-	1033	1203	348	241					
	200L														-	1072	1272	390	275					
MR672 NR672 NR673	112M	370 290	65 440	190	26 400	440	400 300	4	20	18 350	440	415	484	250 12.7	-	825	960	218	146	70 (m6)	74.5	20	140	M20
	132S														-	879	1024	257	168					
	132M														-	917	1062	257	168					
	160M														-	991	1161	310	225					
	160L														-	1035	1205	310	225					
	180M														-	1049	1219	348	241					
	180L														-	1087	1257	348	241					
	200L														-	1129	1329	390	275					
	225S														-	1155	1345	434	285					
225M	-	1180	1370	434	285																			
MR772 NR772 NR773	132S	410 340	70 490	220	33 458	480	450 350	5	24	18 400	480	505	570	315 29	-	958	1103	257	168	90 (m6)	95	25	170	M24
	132M														-	996	1141	257	168					
	160M														-	1072	1242	310	225					
	160L														-	1116	1286	310	225					
	180M														-	1133	1303	348	241					
	180L														-	1171	1341	348	241					
	200L														-	1210	1410	390	275					
	225S														-	1237	1427	434	285					
	225M														-	1262	1452	434	285					
250M	-	1366	-	480	332																			
MR872 NR872 NR873	132M	500 380	80 583	265	38 530	-	550 450	5	25	18 500	556	570	643	355 24.2	-	1106	1251	257	168	110 (m6)	116	28	210	M24
	160M														-	1181	1351	310	225					
	160L														-	1225	1395	310	225					
	180M														-	1242	1412	348	241					
	180L														-	1280	1450	348	241					
	200L														-	1319	1519	390	275					
	225S														-	1348	1538	434	285					
	225M														-	1373	1563	434	285					
	250M														-	1476	-	480	322					
	280S														-	1537	-	544	350					
	280M														-	1537	-	544	350					
MR972 NR972 NR973	160L	580 500	100 670	270	38 660	688	660 550	5	28	22 600	688	688	774	425 61	-	1292	1462	310	225	120 (m6)	127	32	210	M24
	180M														-	1308	1478	348	241					
	180L														-	1346	1516	348	241					
	200L														-	1385	1585	390	275					
	225S														-	1403	1593	434	285					
	225M														-	1426	1616	434	285					
	250M														-	1529	-	480	322					
	280S														-	1590	-	544	350					
	280M														-	1590	-	544	350					
	315S														-	1702	-	614	510					
	315M														-	1754	-	614	510					

# M Serisi Series

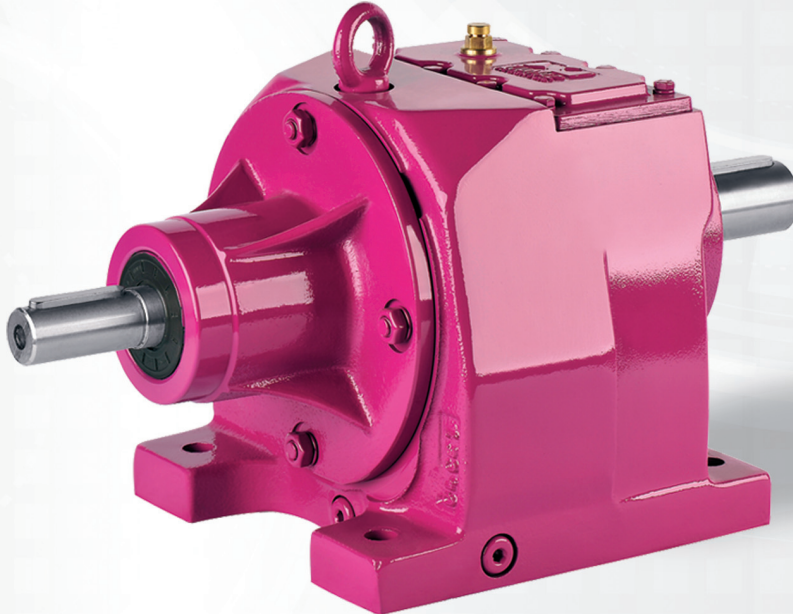


2-3 Kademeli Redüktörler ölçü tablosudur.  
Dimensions table of gearboxes with 2-3 stages.

MT NT	Ayaklı Ölçüler Dimensions of Foot Mounting					Flanşlı Ölçüler Dimensions of Flange Mounting					Ortak Ölçüler Dimensions of both Gearbox Types												
	a b	c f	i	s g	p2	af bf	cf	gf	sf m	f1	k	h	h1	p	p1	d	u	t	d1	u1	t1	M M1	l l1
MT002 NT003	110	13	77	9	-	140	3	10	10	130	278	75	8,6	132	-	20 (k6)	22,5	6	19 (k6)	21,5	6	M6 M6	40 40
MT102 NT103	130	18	80	9	-	160	4	10	10	153	341	90	10,2	155	-	25 (k6)	28	8	24 (k6)	27	8	M10 M8	50 50
MT172 NT173	130	18	72,5	9,5	165	160	4	10	10	165	341	90	5,9	151	-	25 (k6)	28	8	24 (k6)	27	8	M10 M8	50 50
MT202 NT203	165	25	99	11,5	-	200	4	13	12	190	396	115	13	191	-	30 (k6)	33	8	24 (k6)	27	8	M10 M8	60 50
MT272 NT273	165	24	96,5	11,5	202	200	4	15	12	202	397	115	11,2	192	-	35 (k6)	38	10	24 (k6)	27	8	M12 M8	70 50
MT282 NT283	195	29	103	14	220	250	4	15	14	220	446	130	11,9	218	265	35 (k6)	38	10	28 (k6)	31	8	M12 M10	70 60
MT372 NT373	205	30	115	16	239	250	4	14	14	239	467	140	9,2	232	287	40 (k6)	43	12	28 (k6)	31	8	M16 M10	80 60
MT472 NT473	260	45	139	18	306	300	4	16	14	306	556	180	10,4	296	352	50 (k6)	53,5	14	34 (k6)	37	10	M16 M12	100 70

## Helisel Monoblok Redüktörler Helical Monoblock Gearboxes

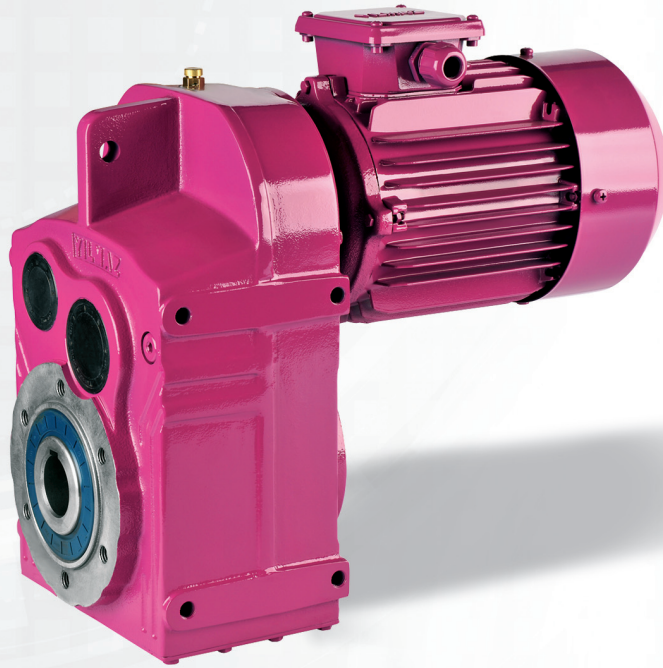
MT NT	Ayaklı Ölçüler Dimensions of Foot Mounting					Flanşlı Ölçüler Dimensions of Flange Mounting					Ortak Ölçüler Dimensions of both Gearbox Types												
	a b	c f	i	s g	p2	af bf	cf	gf	sf m	f1	k	h	h1	p	p1	d	u	t	d1	u1	t1	M M1	I I1
MT572 NT573	310 250	50 365	160	22 340	362	350 250	4	20	18 300	362	652	225	10,7	367	421	60 (m6)	64	18	44 (m6)	47,5	12	M20 M16	120 90
MT672 NT673	370 290	65 440	190	26 400	440	400 300	4	20	18 350	440	746	250	12,7	415	484	70 (m6)	74,5	20	48 (m6)	51,5	14	M20 M16	140 100
MT772 NT773	410 340	70 490	220	33 458	480	450 350	5	24	18 400	490	870	315	29	505	570	90 (m6)	95	25	55 (m6)	59	16	M24 M20	170 100
MT872 NT873	500 380	80 583	265	38 530	556	550 450	5	25	18 500	556	1012	355	24,2	570	643	110 (m6)	116	28	55 (m6)	59	16	M24 M20	210 120
MT972 NT973	580 500	100 660	270	38 660	688	660 550	6	28	22 600	688	1096	425	61	688	774	120 (m6)	127	32	55 (m6)	59	16	M24 M20	210 120



# D

## Serisi Series

### Delik Milli Redüktörler Hollow Shaft Mounted Gearboxes



**10 farklı büyüklükte,**

Moment Aralığı : 130-18.000 Nm

Devir Aralığı : 0,1-350d/dak

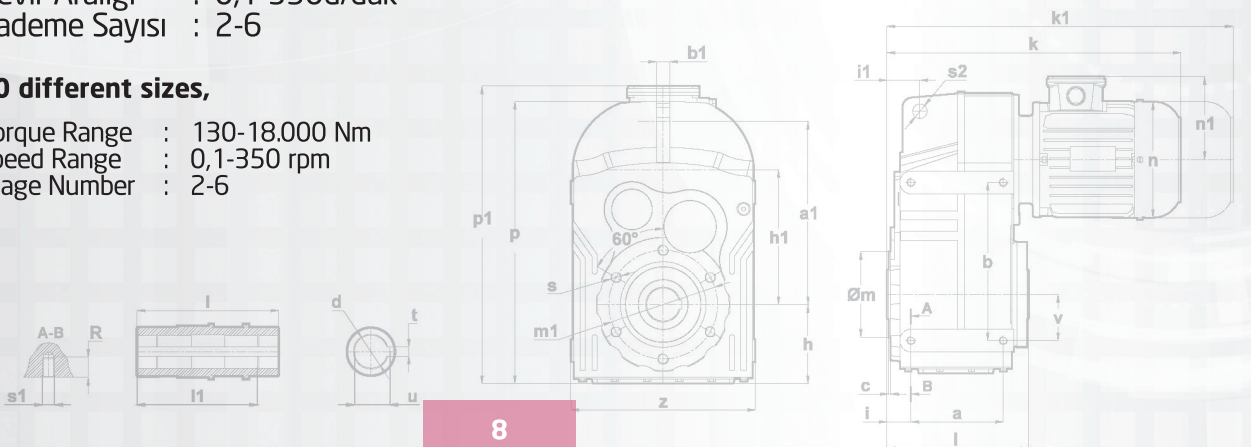
Kademe Sayısı : 2-6

**10 different sizes,**

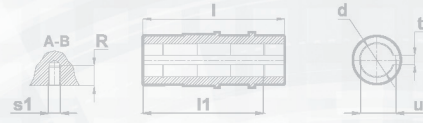
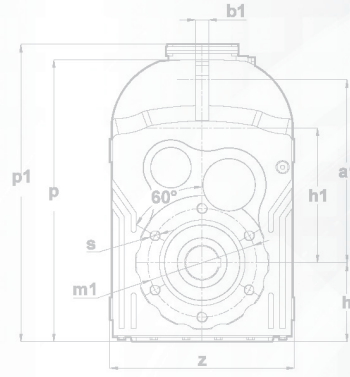
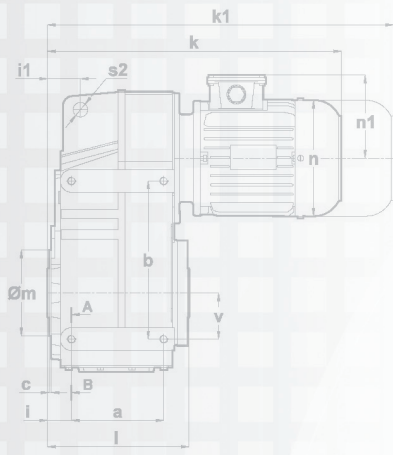
Torque Range : 130-18.000 Nm

Speed Range : 0,1-350 rpm

Stage Number : 2-6



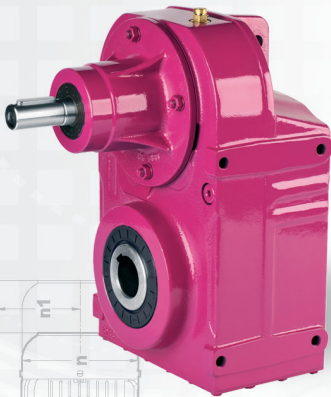
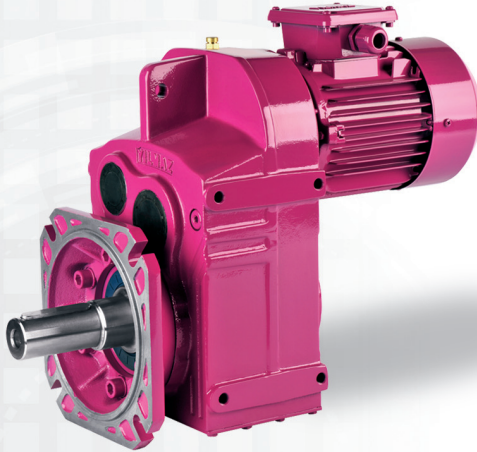
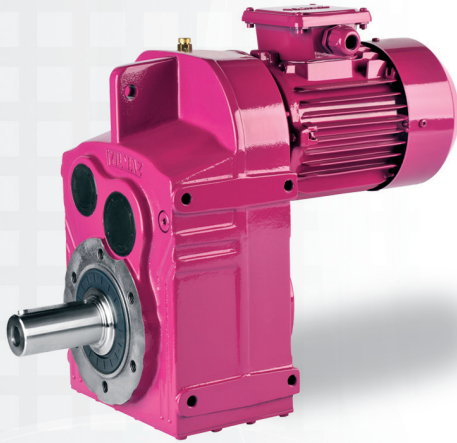




# D

## Serisi

### Series



## D Serisi

D serisi redüktörler helisel alın dişliye sahiptir. Giriş ve çıkış milleri aynı düzlem üzerinde, birbirine paralel ve belirli bir aralıkta yerleştirilmiştir. İki yan yüzde bulunan bağlantı civataları, flanş veya tork kolu ile makineye sabitlenebilen redüktörlerdir.

D serileri kompakt tasarımı rahat montajı ve estetik görünüşü ile YILMAZ REDÜKTÖR ürün ailesindedir. Helisel dişlileri ve diğer parçaları diğer ürünlerde olduğu gibi YILMAZ REDÜKTÖR kalite sisteminde kontrol edildikten sonra montajlanır.

### D Serisi Redüktörlerin Avantajları

- Delik mil ile veya çıkış mili ile montajı,
- Flanş bağlantı çeşitliliği,
- Kolay kullanımı,
- Yüksek ömürlü rulman kullanımı
- GG20 pik, GGG40 döküm gövde,
- Geniş tahvil oranı ve tork aralığı seçenekleri

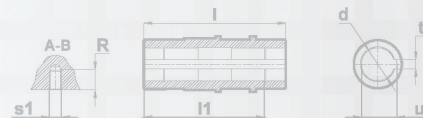
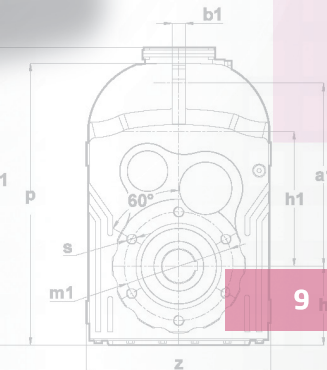
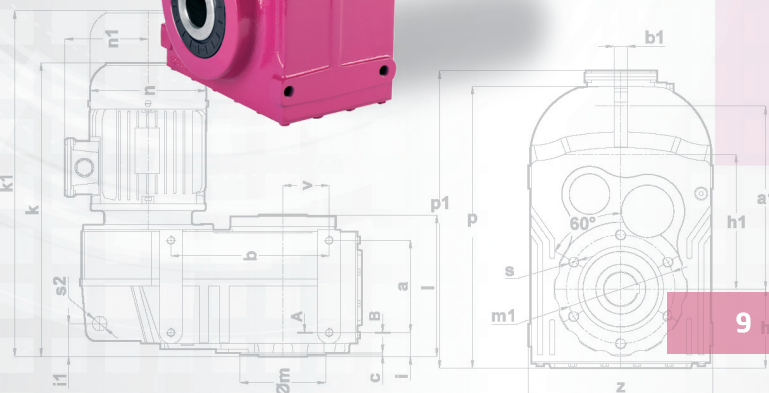
## D Series

D Series are helical geared gearboxes with parallel input and output shafts. The shafts have a distance in between and located on the same plane. The gearbox can be assembled to the machine by using the foot, the connection screws on the sides, flange or torque arm on the gearbox.

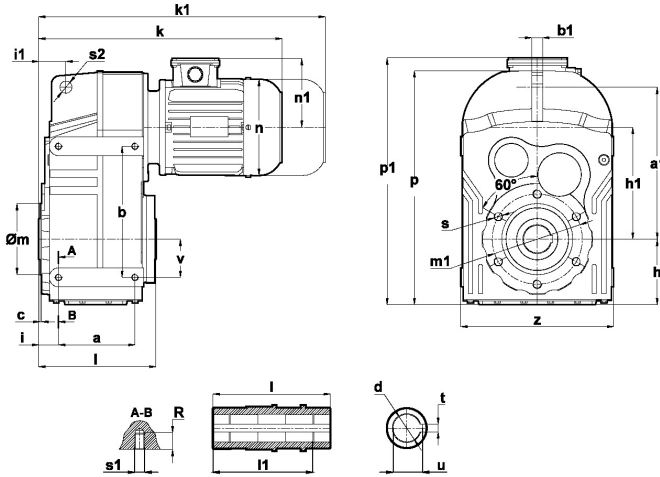
D series gearboxes are members of YILMAZ REDUKTOR family with compact design, comfortable mounting and aesthetic outlook. Helical gears and other parts will be assembled like at all gearboxes after testes according YILMAZ REDUKTOR quality system.

### The advantages of D Series gearboxes:

- Mounting possibilities with hollow or solid output shaft,
- Flange connection options,
- Easy usage,
- GG20 cast iron, GGG40 housing material,
- Wide range of transmission ratio and torque options.



# D Serisi Series



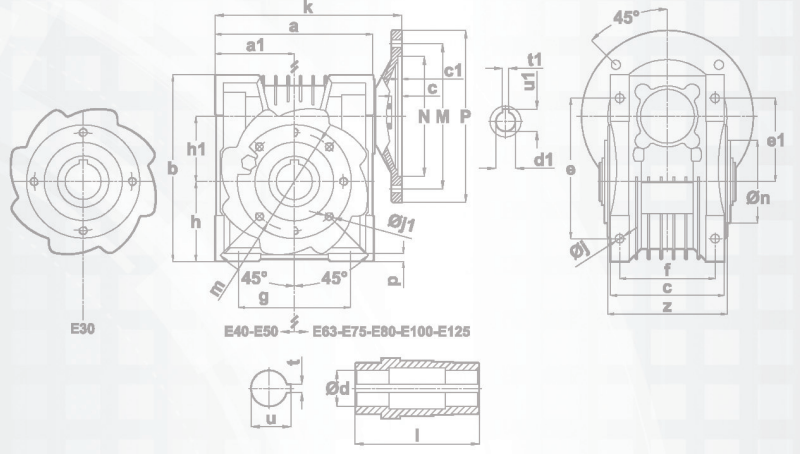
2,3 Kademeli Redüktörler ölçü tablosudur  
Dimensions table of gearboxes with 2,3 stages.

DR	Montaj Ölçüleri Dimensions for Mounting										Dış Boyutlar Dimensions of Outline						Mil Ölçüleri Dimensions of Shaft					
	a a1	b b1	c	h h1	m m1	i i1	s s1	s2 R	v	z	p	p1	k	k1	n	n1	d	u	t	l	l1	
DR172.00 DR173.00	63											286	308	-	116	97	30	33.3	8	120	105	
	71											299	327	447	138	110						
	80	77	115	2.5	73	80	22.5	M8	16	31	172	254	307	355	475	156						118
	90S	158	14		116	92	31.5	M8	10				315	383	508	176						126
	90L												315	408	533	176						126
100L												324	449	584	194	135						
DR272.00 DR273.00	63											317	338	-	116	97	35	38.3	10	157	132	
	71											330	357	477	138	110						
	80	98	145	2.5	81	86	31	M10	16	43	188	286	338	385	505	156						118
	90S	170	14		139	100	32	M10	12				346	413	538	176						126
	90L												346	438	563	176						126
100L												355	479	614	194	135						
DR282.00D DR283.00	71											348	361	481	138	110	40	43.3	12	166	142	
	80											356	389	509	156	118						
	90S	102	170	3	90.5	110	33.5	M12	16	55	207	320	364	417	542	176						126
	90L	198	14		147	130	40.5	M12	12				364	442	567	176						126
	100L												373	483	618	194						135
112M												384	506	641	218	146						
DR372.00 DR373.00	71											379	372	492	138	110	40	43.3	12	185	156	
	80											387	400	520	156	118						
	90S	112	190	3	100	110	37.5	M12	16	60	219	352	395	428	553	176						126
	90L	218	16		169	130	41	M12	15				395	453	578	176						126
	100L												405	494	629	194						135
112M												416	517	652	218	146						
DR472.00 DR473.00	71											435	396	516	138	110	50	53.8	14	215	183	
	80											443	424	544	156	118						
	90S											451	453	578	176	126						
	90L	140	240	3	120	130	36.5	M16	22	70	280	428	451	478	603	176						126
	100L	278	20		204.5	165	50	M12	18				460	518	653	194						135
	112M												471	541	676	218						146
	132S												493	595	740	258						168
132M												493	633	778	258	168						

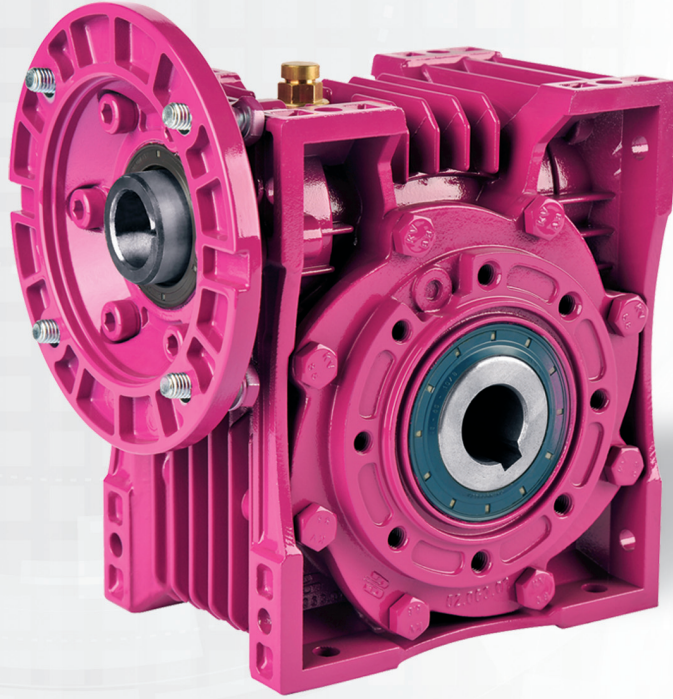
## Delik Milli Redüktörler Hollow shaft mounted gearboxes

DR	Montaj Ölçüleri Dimensions for Mounting										Dış Boyutlar Dimensions of Outline					Mil Ölçüleri Dimensions of Shaft																							
	a a1	b b1	c	h h1	m m1	i i1	s s1	s2 R	v	z	p	p1	k	k1	n	n1	d	u	t	l	l1																		
DR572.00 DR573.00	80	165 346	310 26	3	151 260	180 215	43 62	M16 M16	22 24	100	339	541	-	446	566	156	118	60	64.4	18	246	210																	
	90S												-	474	599	176	126																						
	90L												-	499	624	176	126																						
	100L												546	537	672	194	135																						
	112M												557	563	698	218	146																						
	132S												579	612	757	258	168																						
	132M												579	650	795	258	168																						
	160L												636	725	895	310	225																						
	160M												636	769	939	310	225																						
	180M												652	786	956	348	241																						
180L	652	824	994	348	241																																		
DR672.00 DR673.00	100L	205 395	350 30	3	176 298	180 215	48.5 70	M16 M16	26 24	120	412	630	-	586	721	194	135	70	74.9	20	308	270																	
	112M												-	609	744	218	146																						
	132S												642	663	808	258	168																						
	132M												642	701	846	258	168																						
	160L												699	776	946	310	225																						
	160M												699	820	990	310	225																						
	180M												715	836	1006	348	241																						
	180L												715	874	1044	348	241																						
	200L												749	913	1113	390	275																						
	DR772.00 DR773.00												100L	235 485	400 36	4	202 343						230 265	69.5 88	M20 M24	26 34	125	464	727	-	578	713	194	135	90	95.4	25	363	313
112M		-	647	782	218	146																																	
132S		-	701	846	258	168																																	
132M		-	739	884	258	168																																	
160M		770	813	983	310	225																																	
160L		770	857	1027	310	225																																	
180M		786	871	1041	348	241																																	
180L		786	909	1079	348	241																																	
200L		820	951	1151	390	275																																	
225S		830	977	-	433	285																																	
225M		830	1002	-	433	285																																	
DR872.00 DR873.00		132S	280 550	450 40	5	233 400	250 300	79 110	M24 M24	45 34	142	530	863					-	747	892	258	168								110	116.4	28	428	373					
		132M																-	785	930	258	168																	
	160M	-												860	1030	310	225																						
	160L	-												904	1074	310	225																						
	180M	874												921	1091	348	241																						
	180L	874												959	1129	348	241																						
	200L	908												998	1198	390	275																						
	225S	918												1027	-	433	285																						
	225M	918												1052	-	433	285																						
	250M	955												1155	-	480	322																						
	280S	983												1216	-	544	350																						
	280M	983												1216	-	544	350																						
	DR972.00 DR973.00	160M												310 660	540 45	5	271 455	300 350	118 150	M30 M30	45 35	170	660	1049	-	928	1098	310	225						120	127.4	32	500	460
		160L																							-	972	1142	310	225										
180M		-	988	1158	348	241																																	
180L		-	1026	1196	348	241																																	
200L		-	1065	1265	390	275																																	
225S		-	1081	-	433	285																																	
225M		-	1106	-	433	285																																	
250M		-	1209	-	480	322																																	
280S		1076	1270	-	544	350																																	
280M		1076	1270	-	544	350																																	
315S		1236	1425	-	614	510																																	
315M		1236	1425	-	614	510																																	

# E Serisi Series



## Sonsuz Tip Redüktörler Worm Gearboxes

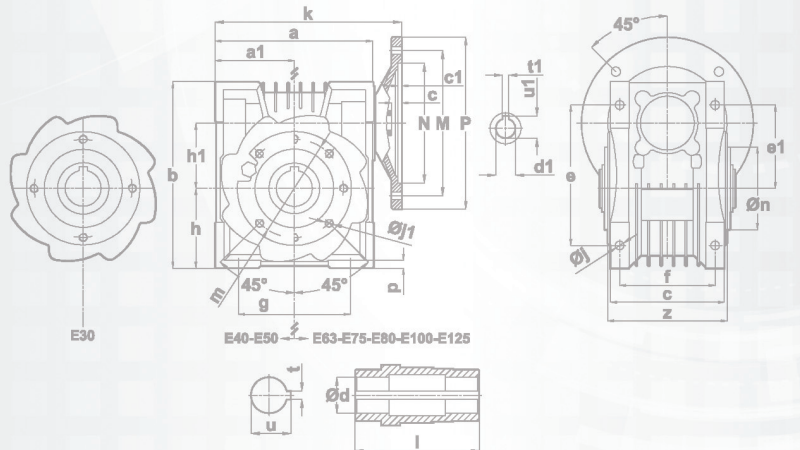


### 8 farklı büyüklükte,

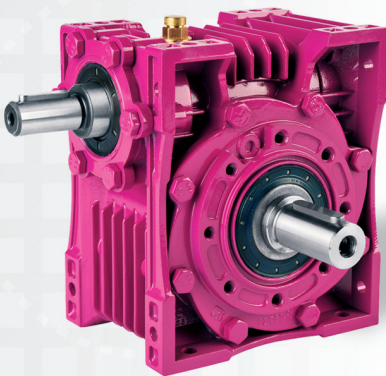
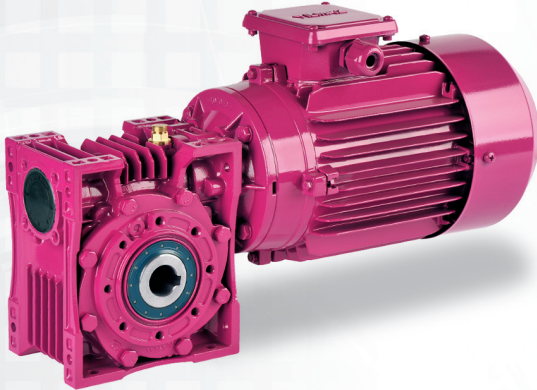
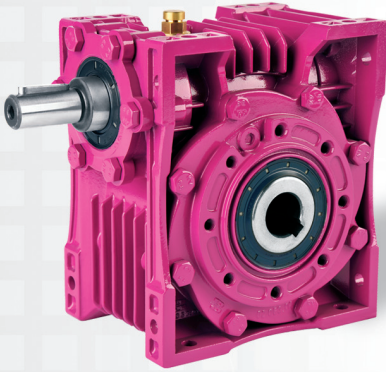
Moment Aralığı : 5-1.000 Nm  
Devir Aralığı : 0,1-400d/dak  
Kademe Sayısı : Tek Kademe

### 8 different sizes,

Torque Range : 5-1.000 Nm  
Speed Range : 0,1-400 rpm  
Stage Number : One Stage



# E Serisi Series



## E Serisi

E serisi redüktörler sonsuz vida ve çark dişli, belirli bir aralıkta ve birbirine dik konumlandırılmış giriş ve çıkış millerine sahip, çevre konumlandırılmış ayak bağlantıları, flanş veya tork kolu ile makineye sabitlenebilen redüktörlerdir.

E serisi modüler tasarımı ile esnek montaj pozisyonlarına, optimize edilmiş soğutma kanatçıkları ile birlikte maksimum termal kapasiteye sahiptir. Tek kademe 7.5 -100 tahvil oran aralığına sahiptir. Daha yüksek tahvil oranı akuple gövde ile mümkündür. Fren kullanmak yerine tahvil oranına göre otoblokajlı olarak kullanılabilir.

### E Serisi Redüktörlerin Avantajları

- Sertleştirilmiş ve taşlanmış sonsuz vida ve bronz çark ile yüksek ömre sahip
- E30, E40, E50, E63, E75 ve E80 büyüklüklerinde alüminyum enjeksiyon gövde,
- E100 ve E125 büyüklüklerinde ise GG20 pik döküm gövde.

## E Series

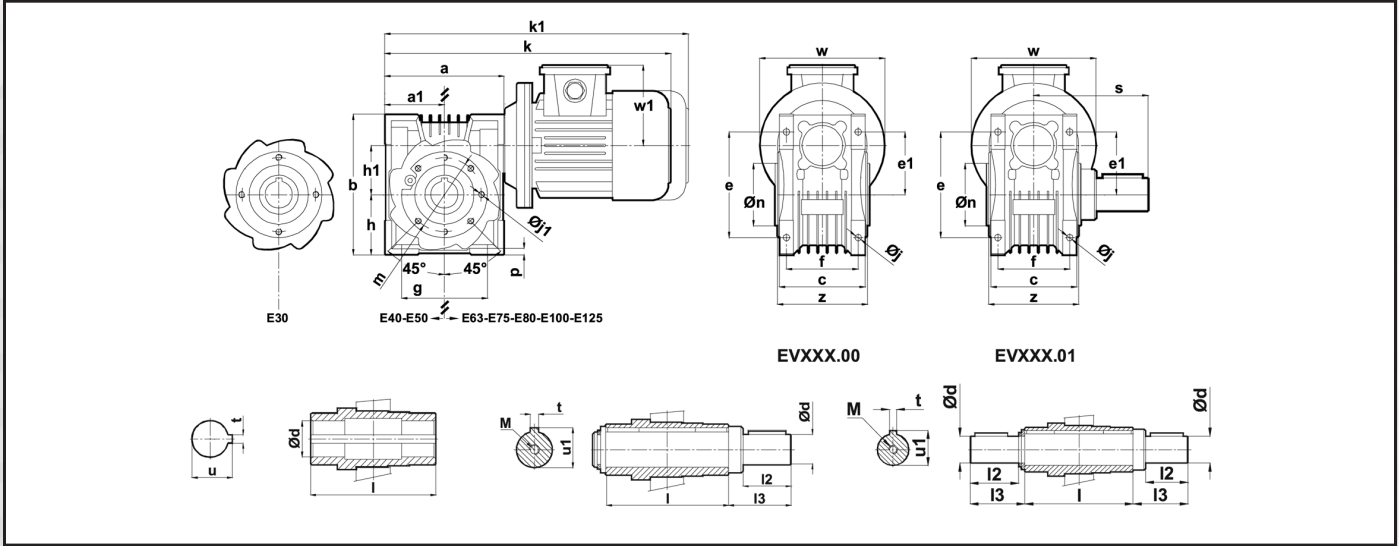
E series gearboxes are with worm and wormwheel. The input and output shafts are perpendicular to each other and have a certain distance. It can be assembled to the driven machine by the use of the foot, flange or torque arm on the gearbox.

E series have modular design with flexible mounting positions and maximum thermal capacity by optimized design of cooling ribs. Have different ratios from 7.5 up to 100 in single stage. High ratios are possible with double gearboxes. Instead of using brakes according to transmission ratio this gearboxes can be used with their irreversibly feature.

### The advantages of E Series gearboxes:

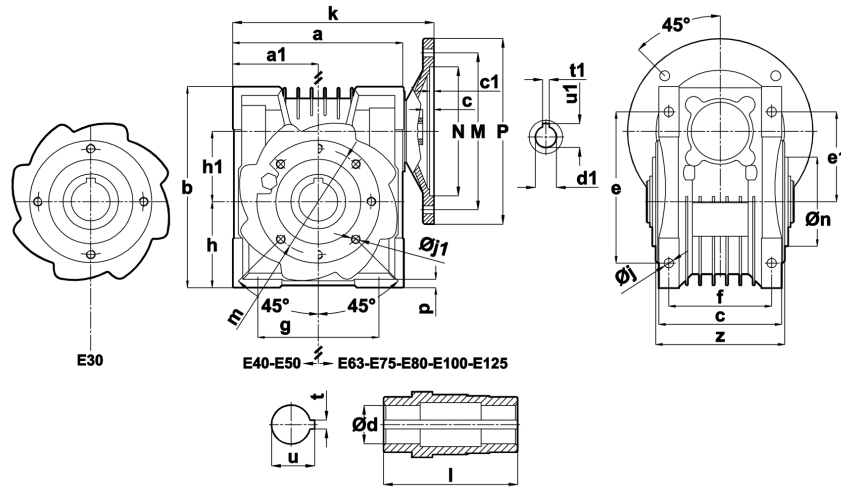
- Long lifetime with heat treated and grinded worm gears and bronze worm wheel
- E30, E40, E50, E63, E75 and E80 are offering with aluminium injection housings
- E100 and E125 are offering with GG20 cast iron housings.

# E Serisi Series



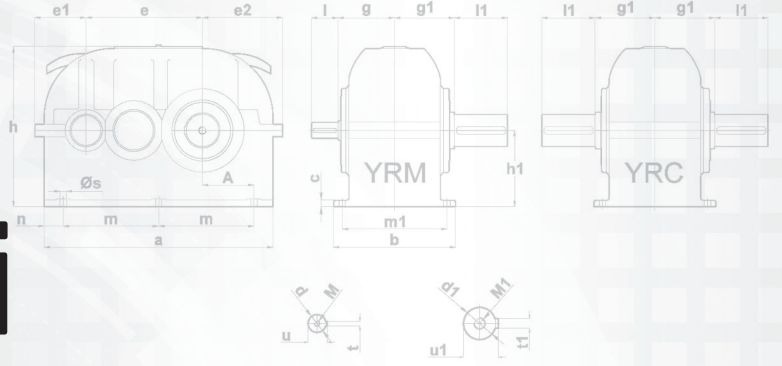
EV	Montaj Ölçüleri Dimensions for Mounting														Dış Boyutlar Dimensions of Outline				Mil Ölçüleri Dimensions of Shaft						
	a a1	b	c	e	e1	f	g	h h1	p	j	j1	m n	s	z	k	k1	w	w1	d	t	u u1	l	l2	l3	M
EV030.00	56	81						40				65			235.5	-	105	96	14	5	16.3	66	30	34	M5
EV030.01	63	40	97	55	72	44,5	45	30	6	6.5	M5	55	67	61	287.5	340.5	121	97			16				
EV040.00	63	103	122	70	90	56	60	50	6	6.5	M6	65	85.5	73	321	374	121	97	18	6	20.8	82	40	44.5	M6
EV040.01	71	51.5						40				55			347	467	138	110			20.5				
EV050.00	63														342	395	121	97							
EV050.01	71	124	150	90	110	70	75	60	7	8.5	M8	85	104	94	368	488	138	110	25	8	28.3	98	50	55	M10
	80	61						50				70			388	508	156	97			28				
	90S														408	533	176	110							
	90L														433	558	176	118							
	71														398	518	138	110							
EV063.00	80	154	180	110	135	80	92	77	8	8.5	M8	95	116	112	418	538	156	118	25	8	28.3	122	50	55	M10
EV063.01	90S	77						63				80			438	563	176	126			28				
	90														463	588	176	126							
	80														439.5	559.5	156	118							
EV075.00	90S	174	208	112	153	93	90	86	10	11.5	M8	115	132	114	459.5	584.5	176	126	35	10	38.3	120	65	72	M12
EV075.01	90L	87						75				95			484.5	609.5	176	126			38				
	100L														516.5	651.5	194	135							
	112M														536.5	671.5	218	146							
	80														457.5	577.5	156	118							
EV080.00	90	192	226	120	172	104	100	96	10	13	M8	115	138,5	122	477.5	602.5	176	126	35	10	38.3	133	65	72	M12
EV080.01	90L	96						80				95			502.5	627.5	176	126			38				
	100L														534.5	669.5	194	135							
	112M														554.5	689.5	218	146							
	80														499.5	619.5	156	118							
EV100.00	90S	234	275	135	195	115	110	115	14	13	M8	130	165	140	519.5	644.5	176	126	42	12	45.3	156	80	87	M16
EV100.01	90L	117						100				110			544.5	669.5	176	126			45				
	100L														576.5	711.5	194	135							
	112M														596.5	731.5	218	146							
	90S														582	707	176	126							
EV125.00	90L	290	350	155	260	150	110	145	16	13	M10	160	200	169	607	732	176	126	45	14	48.8	185	100	107.5	M16
EV125.01	100L	145						125				130			639	774	194	135			48.5				
	112M														659	794	218	146							
	132S														698	843	257	168							
	132M														736	881	257	168							

# Sonsuz Tip Redüktörler worm gearboxes

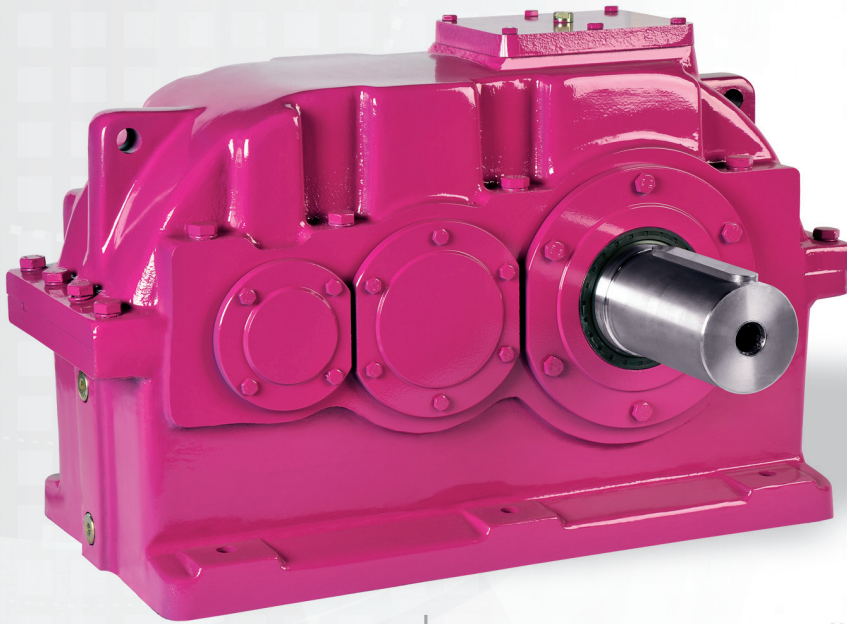


EN	Montaj Ölçüleri Dimensions For Mounting										Flanş Ölçüleri Dimensions Of Flange					Mil Ölçüleri Dimensionsof Shaft							
	a a1	b	c	e e1	f f1	h h1	j j1	m m1	p p1	k	N	M	P	c	c1	d	t	u	d1	t1	u1	l	
EN030.00	56/B14	81	97	55	72	45	40	6.5	65	6	94.5	50	65	80	4.2	3	14	5	16.3	9	3	10.4	66
	63/B14	40			44.5	55	30	M5	55	6	61	60	75	90	4.2	3				11	4	12.8	
	63/B5											95	115	140	4.2	3.5				11	4	12.8	
EN040.00	63/B14	103	122	70	90	60	50	6.5	65	6	128	60	75	90	4	2.5	18	6	20.8	11	4	12.8	82
	71/B14	51.5			56	70	40	M6	50	73	70	85	105	4	2.5	14				5	16.3		
	63/B5											95	115	140	4	3.5				11	4	12.8	
EN050.00	71/B14	124	150	90	110	75	60	8.5	85	7	149	70	85	105	10.7	3	25	8	28.3	14	5	16.3	98
	80/B14	61			70	79	50	M8	70	94	80	100	120	10.7	4	19				6	21.8		
	90/B14											95	115	140	10.7	4.5				24	8	27.3	
EN063.00	63/B5	154	180	110	135	92	77	8.5	95	8	179	95	115	140	10.7	4.5	25	8	28.3	11	4	12.8	122
	71/B5	77			80	110	63	M8	80	12	110	130	160	5.7	4.5	14				5	16.3		
	80/B5											130	165	200	5.7	4.5				19	6	21.8	
EN075.00	80/B5	174	208	112	153	90	86	11.5	115	10	200.5	130	165	200	10.5	4.5	35	10	38.3	14	5	16.3	120
	90/B5	87			93	120	75	M8	95	114	130	165	200	10.5	4.5	24				8	27.3		
	100-112/B5											180	215	250	10.5	4.5				28	8	31.3	
EN080.00	80/B14	192	226	120	172	100	96	13	115	10	218.5	80	100	120	5.5	5	35	10	38.3	19	6	21.8	133
	90/B14	96			104	137	80	M8	95	122	95	115	140	5.5	5	24				8	27.3		
	100-112/B14											110	130	160	5.5	5				28	8	31.3	
EN100.00	80/B5	234	275	135	195	110	115	13	130	14	260.5	130	165	200	5.5	4.5	42	12	45.3	19	6	21.8	156
	90/B5	117			115	160	100	M8	110	140	130	165	200	5.5	4.5	24				8	27.3		
	100-112/B5											180	215	250	5.5	4.5				28	8	31.3	
EN125.00	80/B14	290	350	155	260	125	145	13	165	16	323	80	100	120	5.5	5	45	14	48.8	28	8	31.3	185
	132/B14	145			150	210	125	M10	130	169	130	165	200	12.8	4	38				10	41.3		
	90/B5											130	165	200	12.8	4				24	8	27.3	
100-112/B5											180	215	250	15.8	4	28	8	31.3					
132/B5											230	265	300	15.8	4	38	10	41.3					

# Y Serisi Series



## Yatık Tip Redüktörler Horizontal Type Gear Unit

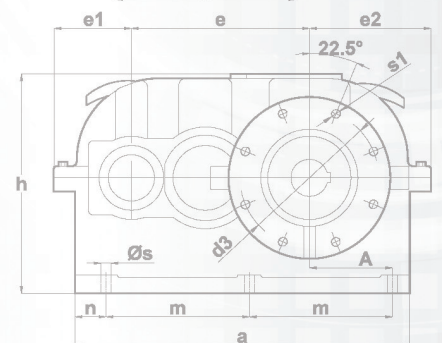
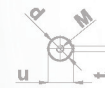
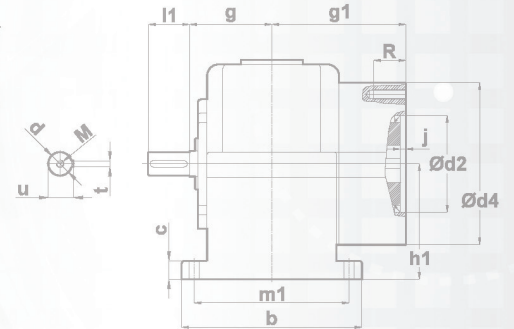
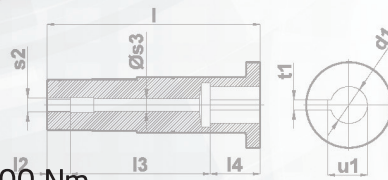


### 25 farklı büyüklükte,

Moment Aralığı : 1200-43.000 Nm  
Devir Aralığı : 2,6-990d/dak  
Kademe Sayısı : 1-4

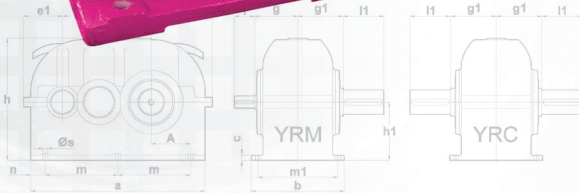
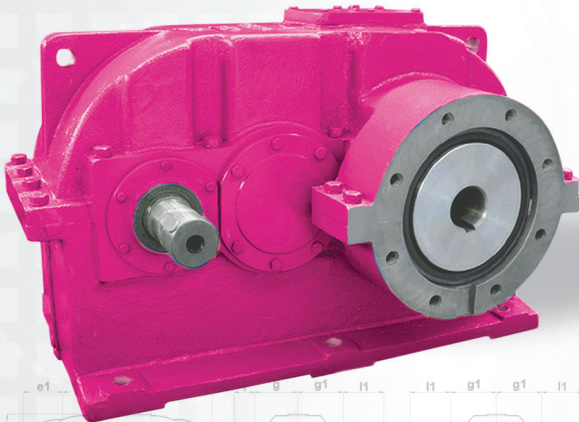
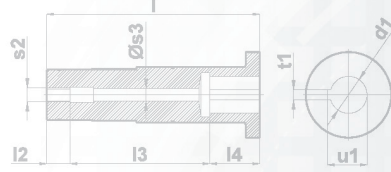
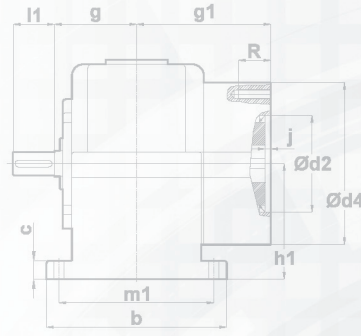
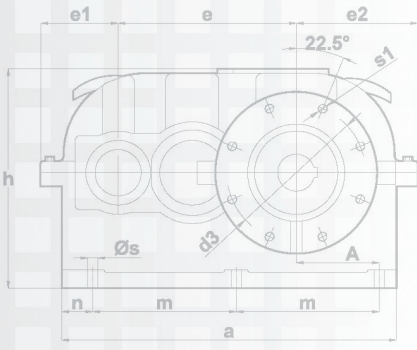
### 25 different sizes,

Torque Range : 1200-43.000 Nm  
Speed Range : 2,6-990 rpm  
Stage Number : 1-4





# Y Serisi Series



## Y Serisi

Y serisi redüktörler çok ağır şartlarda çalışmak üzere dizayn edilmiş endüstriyel tip redüktörlerdir. Bu tiplerde redüktör ile bunu tahrik eden mekanizma arasında değişik bağlantı şekilleri mevcuttur (mekanik ve hidrolik kaplinler, çeşitli tip kayışlar ve zincirle tahrik gibi).

Y serisi redüktörlerin gövdesi ve kapağı GGG40 malzemeden dökülmüştür. Dişliler yüksek kaliteli olarak taşlanmış, sertleştirilmiş sementasyon çeligidendir. Ortam sıcaklığının yüksek olduğu yerlerde soğutmalı olarak kullanılabilir.

### Y Serisi Redüktörlerin Avantajları

- ISO standartlarına uygun eksen aralığı,
- Kolay bakım özelliği,
- Geniş endüstriyel kullanım alanı,
- Geniş gövde büyüklüğü ve tahvil oranı aralığı

YRE tipi yatık redüktörler, ekstruder uygulamaları için özel geliştirilmiş olup çıkıştan gelen aksenal yükleri karşılayabilecek şekilde tasarlanmıştır. Ön ekstruder boğazı gövde ile yekpare dökülmüş olup, ön boğaza yüksek mukavemet kazandırılmıştır.

## Y Series

Y series are industrial gearboxes designed to work under heavy conditions. At these gearboxes there are a lot of different connection types between gearbox and driver (for example: mechanic and hydraulic couplings, various belt and chain drives).

Housing and cover of Y series gearboxes are from GGG40 material. Gears are grinded for high quality and are from case-hardening steel. Can be used with cooling equipment where the ambient temperature is very high.

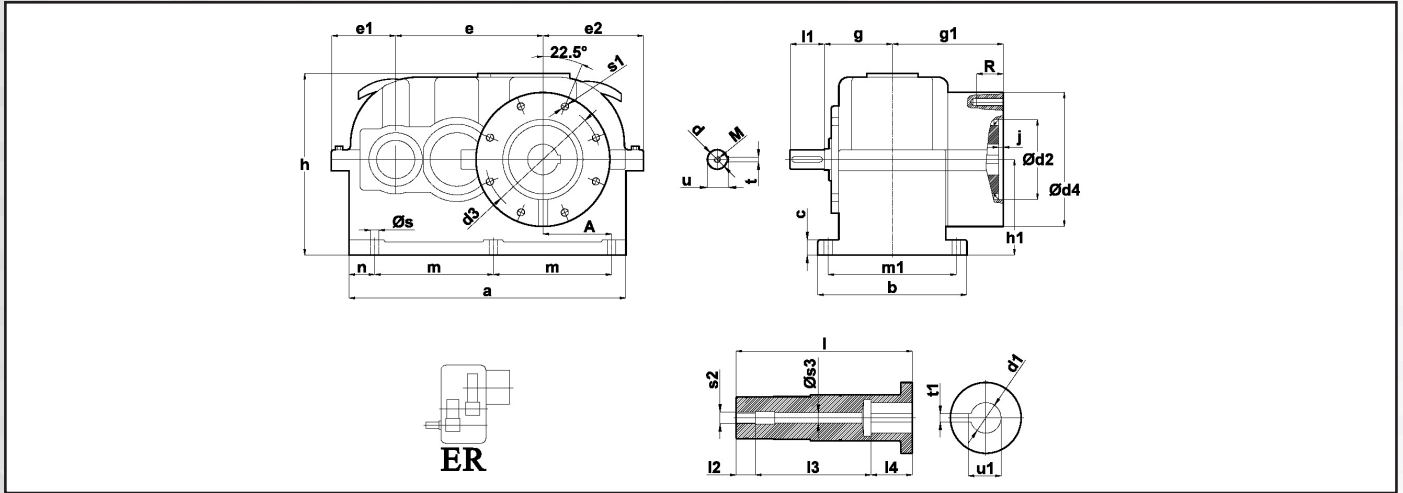
### The advantages of Y Series gearboxes:

- Distance of centre hole according to ISO standards
- Easy maintenance
- Wide range of industrial usage
- Wide range of housing size and transmission ratio

YRE types are specially designed for extruder applications and withstand high axial loads on the output shaft. The extruder housing and main housing are casted together for having high yield strength.

# Y

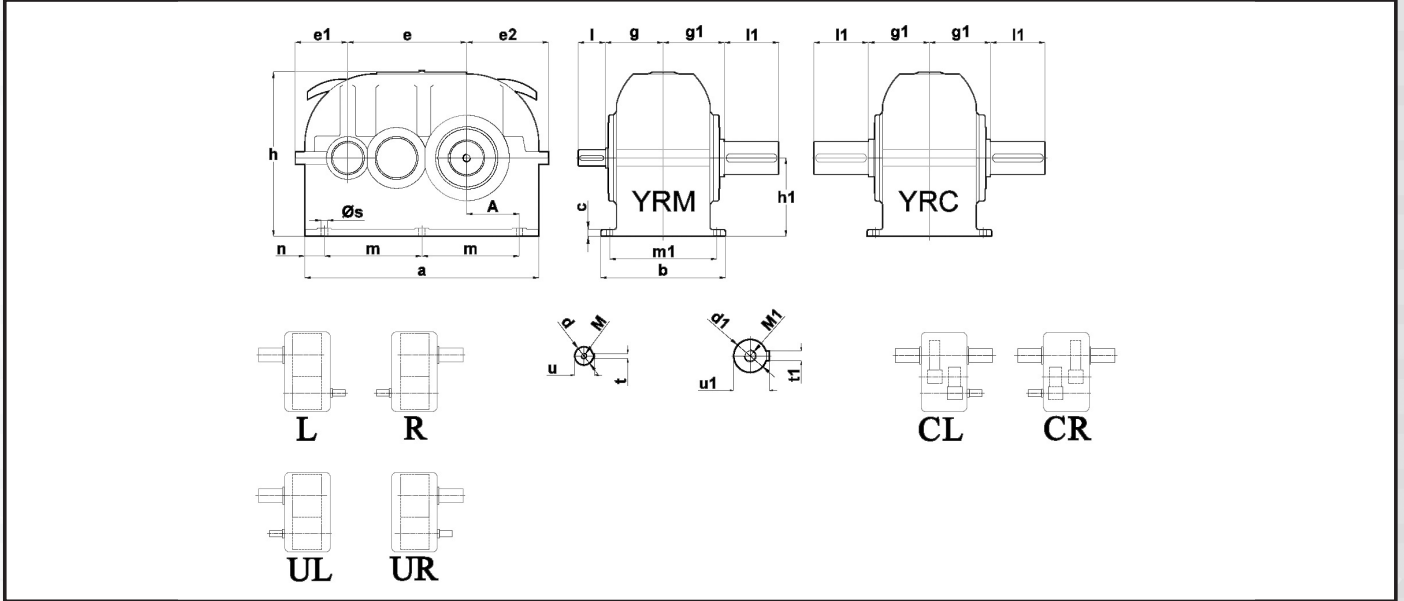
## Serisi Series



2 Kademeli Redüktörler ölçü tablosudur.  
Dimensions table of gearboxes with 2 stages.

YRE	Montaj Ölçüleri Dimensions for Mounting														Mil Ölçüleri Dimensions of Shaft						
	a	b	g g1	c	e	e1 e2	m n	m1 A	h h1	s s1	Ød2	Ød3 Ød4	j	R	d d1	t t1	u u1	l l1	l2 l3	l4 M	s2 s3
YRE2240	475	245	130 225	25	240	106 171	200 35	210 110	340 160	13 M14	165	195 230	10	60	34 55	10 16	37 59.3	345 70	77 138	130 M12	M30 33
YRE2275	534	290	151 230	32	275	126 189	230 38	245 125	350 180	17 M14	200	225 260	10	60	38 40	10 12	41 43.3	352 70	72 210	70 M12	M36 38
YRE2305	600	320	160 250	32	305	210 135	250 50	275 135	395 200	17 M16	215	250 285	10	60	42 50	12 14	45 53.8	396 80	72 239	85 M16	M36 38
YRE2340	665	355	172 260	45	340	148 238	270 60	300 142	460 225	17 M14	200	230 270	10	60	48 65	14 18	51.5 69.4	428 80	72 246	110 M16	M36 38
YRE2385	730	390	190 290	40	385	168 263	318 49	335 175	485 250	22 M20	215	300 350	12	60	50 80	14 22	53.5 85.4	460 90	72 238	150 M16	M36 38
YRE2430	816	450	203 325	50	430	184 296	350 57	380 190	550 280	26 M20	250	300 350	10	50	65 90	18 25	69 95.4	523 110	82 291	150 M20	M45 50
YRE2480	920	500	258 393	50	480	187.5 332.5	380 72.5	430 205	675 315	26 M24	330	400 460	10	50	70 95	20 25	74.5 100.4	624 120	82 402	140 M20	M45 50
YRE2545	1025	580	285 423	45	545	230 375	430 89	490 234	690 355	32 M24	370	430 480	12	50	85 100	22 28	90 106.4	664 130	82 442	140 M20	M45 50

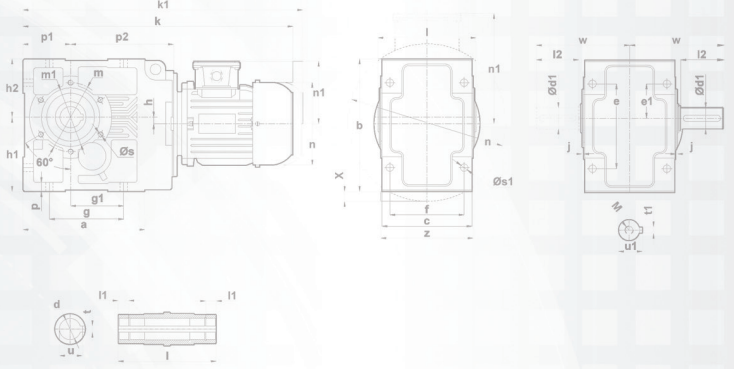
## Yatık Tipi Redüktörler Horizontal Type Gear Unit



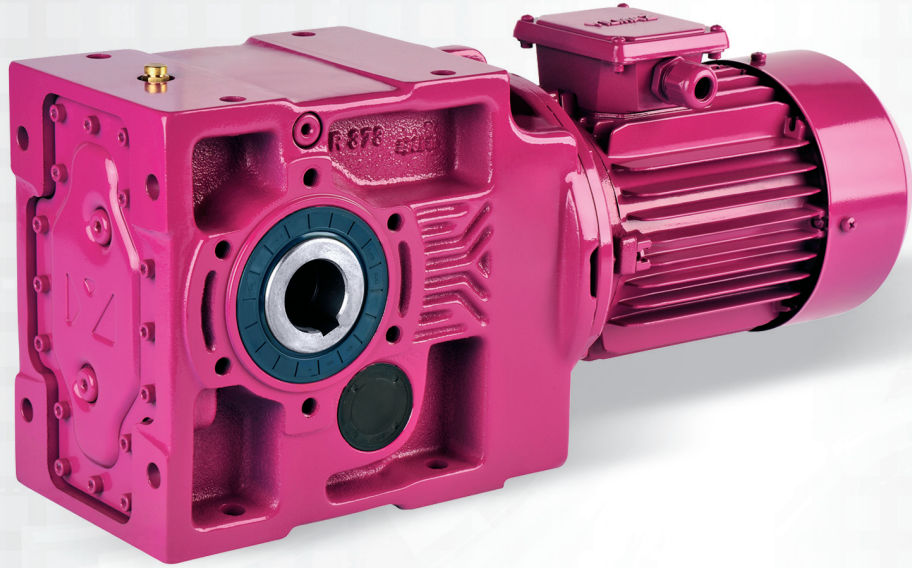
2 Kademeli Redüktörler ölçü tablosudur.  
Dimensions table of gearboxes with 2 stages.

YRM YRC	Montaj Ölçüleri Dimensions for Mounting													Mil Ölçüleri Dimensions of Shaft								
	A	a	b	c	e	e1	e2	h	h1	m	m1	n	s	g g1	d	t	u	d1	t1	u1	l l1	M M1
YRM2195 YRC2195	85	380	215	25	195	92	135	255	125	160	180	31	15	105 110	28 (k6)	8	31	50 (m6)	14	53,5	50 80	M10 M16
YRM2240 YRC2240	110	475	245	25	240	106	171	340	160	200	210	35	13	130 134	34 (k6)	10	37	65 (m6)	18	69	70 105	M12 M20
YRM2275 YRC2275	125	534	290	32	275	126	189	350	180	230	245	38	17	162 139	38 (k6)	10	41	75 (m6)	20	79,5	70 120	M12 M20
YRM2305 YRC2305	135	600	320	32	305	135	210	395	200	250	275	50	17	160 160	42 (k6)	12	45	85 (m6)	22	90	80 140	M16 M24
YRM2340 YRC2340	142	665	355	45	340	148	238	460	225	270	300	59,5	17	172 178	48 (k6)	14	51,5	95 (m6)	25	100	80 160	M16 M24
YRM2385 YRC2385	175	730	390	40	385	168	263	485	250	318	335	49	22	190 195	50 (k6)	14	53,5	100 (m6)	28	106	90 180	M20 M24
YRM2430 YRC2430	190	816	450	50	430	184	296	550	280	350	380	57	26	202,5 225,5	65 (k6)	18	69	110 (m6)	28	116	110 180	M20 M24
YRM2480 YRC2480	205	920	500	50	480	188	333	675	315	380	430	72,5	26	243 258	70 (k6)	20	74,5	130 (m6)	32	137	120 210	M20 M24
YRM2545 YRC2545	234	1025	580	45	545	230	375	690	355	430	490	89	32	285 265	85 (k6)	22	90	140 (m6)	36	148	130 240	M20 M30

# K Serisi Series



## Helisel Konik Dişli Redüktörler Helical Bevel Gearboxes

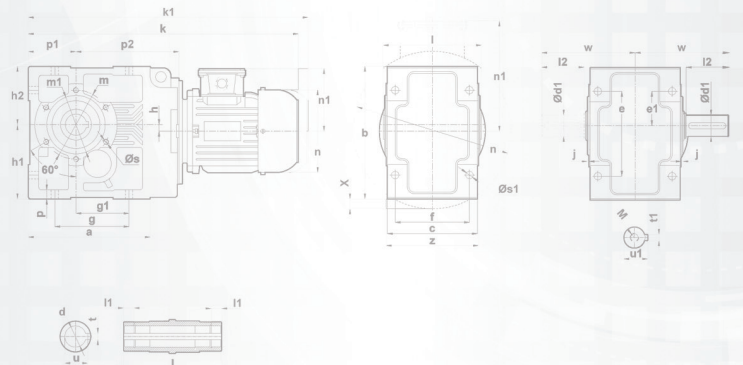


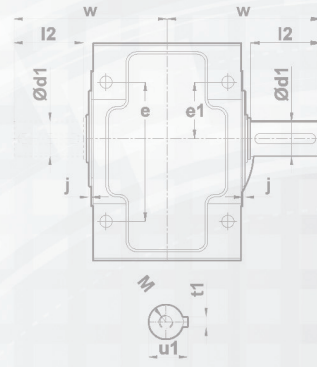
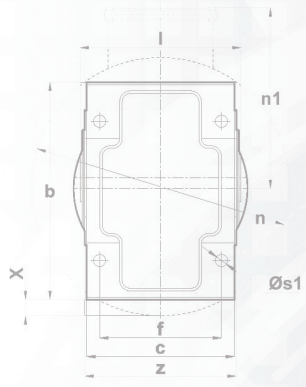
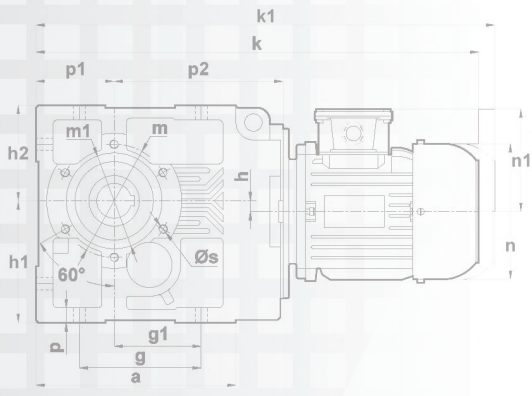
### 7 farklı büyüklükte,

Moment Aralığı : 200-15.000 Nm  
Devir Aralığı : 0,1-400d/dak  
Kademe Sayısı : 3-6

### 7 different sizes,

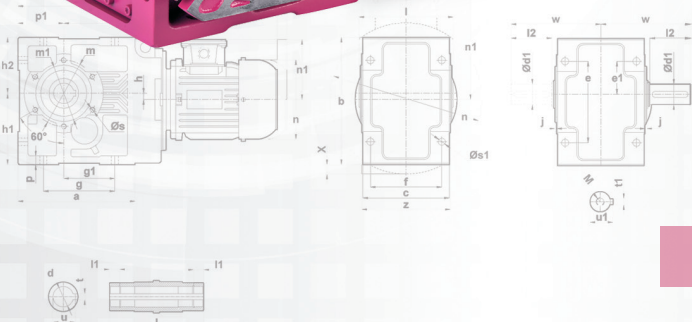
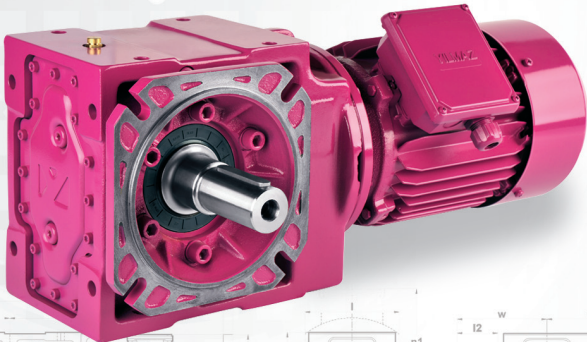
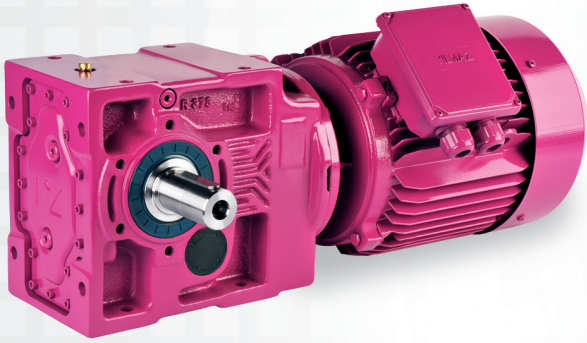
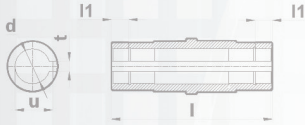
Torque Range : 200-15.000 Nm  
Speed Range : 0,1-400 rpm  
Stage Number : 3-6





# K

Serisi  
Series



## K Serisi

K serisi redüktörler helisel konik dişli redüktörlerdir ve giriş ve çıkış millerinin arasında 90° olması gereken durumlarda, yüksek mukavemetin gerektiği yerler için dizayn edilmiştir. Bütün K serisi redüktörler monoblok gövde içerisinde 3 kademe olarak üretilmektedirler. Yüksek redüksiyon ihtiyacı olan uygulamalarda akuple gövde kullanarak 6 kademeye kadar redüksiyon artırılabilir. Redüktörde kullanılan bütün rulmanlar konik masuralı olup yüksek ömür değerleri hedeflenmiştir.

E serisinin çok yönlü bağlantı seçeneklerine ve M serisinin monoblok rijit gövde ve yüksek verim avantajına sahip. K serileri M ve E serilerinin avantajları ile yüksek torka sahip olarak üretilir. Ayrıca sıkma bilezikli bağlama seçeneği mevcuttur.

Diğer tüm ürünlerde olduğu gibi redüktör tasarımı en son yöntemler kullanılarak, yenilikçi bir anlayışla yapılmaktadır. Bu süreç titiz testlerle tamamlanmaktadır. Tüm ürünler YILMAZ REDÜKTÖR kalite güvencesi altındadır.

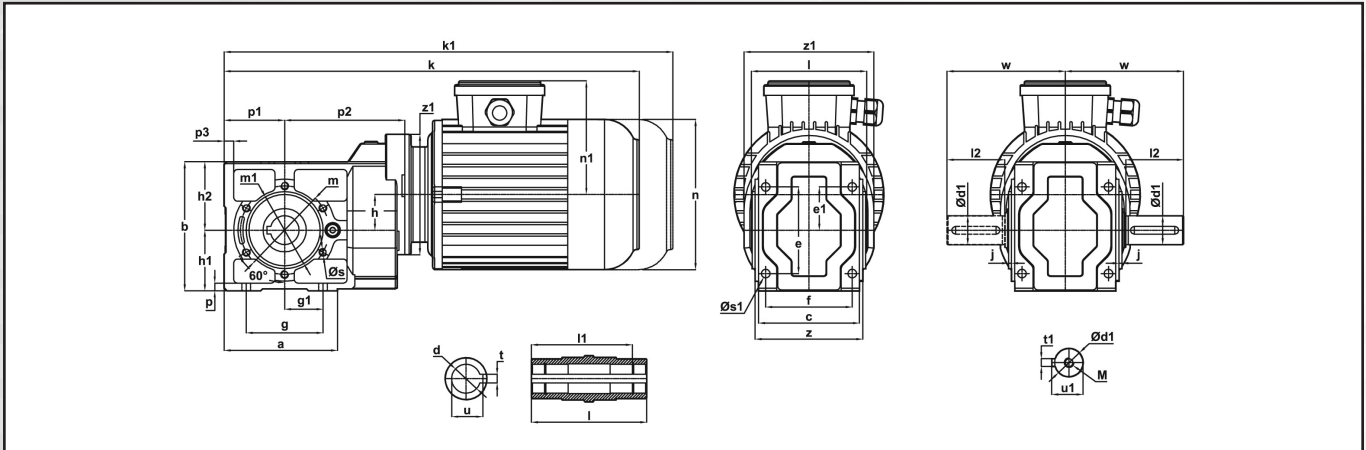
## K Series

K series gearboxes are helical bevel gearboxes and specially designed for where input and output shaft required to be perpendicular; gearbox should have high efficiency and high strengthen properties. All K series are manufactured as 3 staged gears in monoblock housing. K series can be also manufactured for high reduction operations until 6 stages by using double housings. All used bearings in gearbox are tapered roller bearings with long lifetime.

K series having both E series and M series high qualified specifications, these are E series specifications which provides easy connection and modularity and M series specifications that puts monoblock rigid housing and high efficiency advantages together. Therefore K series produced as high torque gearboxes with advantages of M and E series. Have also shrink disc option.

Like at all other products gearbox design is accomplished using the latest techniques with innovative approach. All products are assured by YILMAZ REDUKTOR quality assurance system.

# K Serisi Series

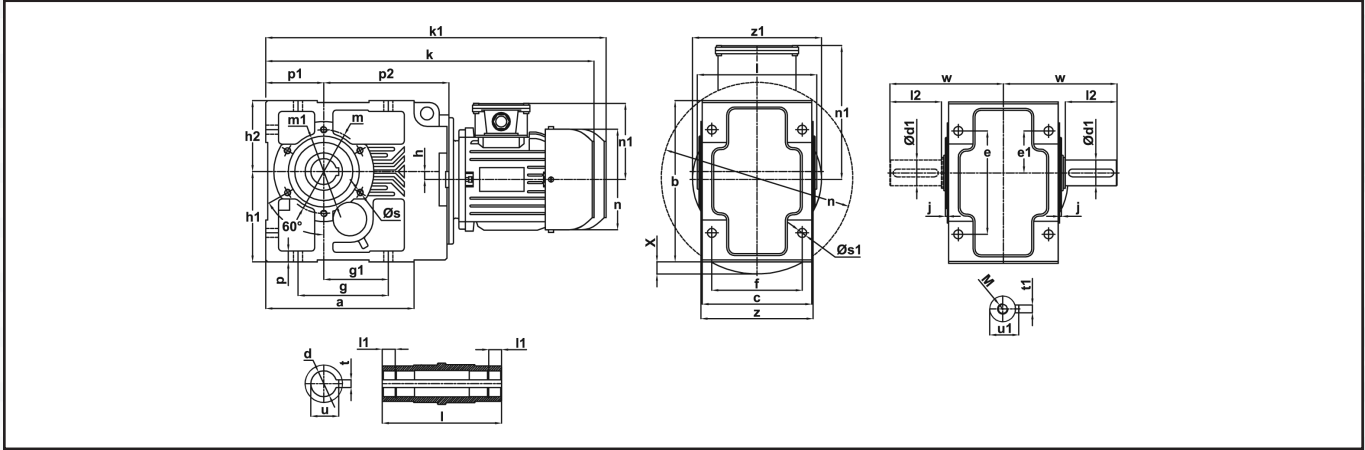


2-3 Kademeli Redüktörler ölçü tablosudur.  
Dimensions table of gearboxes with 2-3 stages.

KR	Montaj Ölçüleri Dimensions for Mounting														Dış Boyutlar Dimensions of Outline				Mil Ölçüleri Dimensions of Shaft					
	a	b	c	f	s1	g g1	e e1	h h1	h2 m	m1 j	p p1	p2 p3	w z	z1 z2	k	k1	n	n1	d	d1	t t1	u u1	l M	l1 l2
KR002/003.00 KR002/003.01 KR002/003.04	63	117	119	100	85	8.2	70	80	30.5	63	70	7	119	100	366	419	116	97	20	20	6	22.8	115	100
	71														385	505	138	110						
	80														413	533	156	118						
	90S														441	566	176	126						
KR102/103.00 KR102/103.01 KR102/103.04	63	118	134	105	90	9	80	90	37	71	80	8	125	112	404	524	138	110	30	30	8	33.3	120	105
	71														432	552	156	118						
	80														460	585	176	126						
	90S														485	610	176	126						
KR202/203.00 KR202/203.01 KR202/203.04	63	145	170	120	100	9	100	110	44.5	90	95	12	152	143	425	478	116	97	35	35	10	38.3	140	140
	71														444	564	138	110						
	80														473	593	156	118						
	90S														500	625	176	126						
	90L														525	650	176	126						
	100L														566	701	194	135						
112M	589	724	218	146																				

# Helisel Konik Dişli Redüktörler

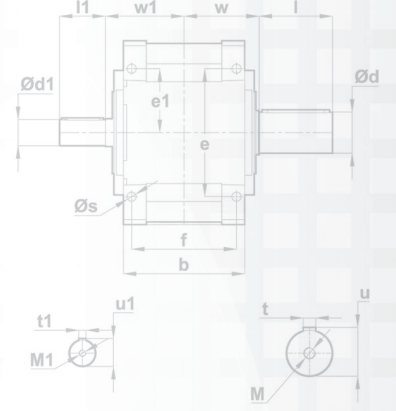
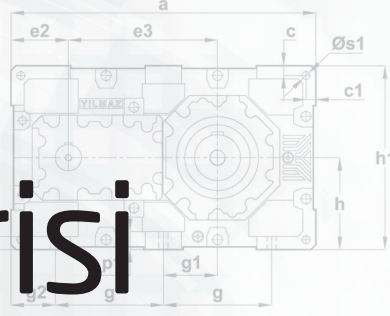
## Helical Bevel Gearboxes



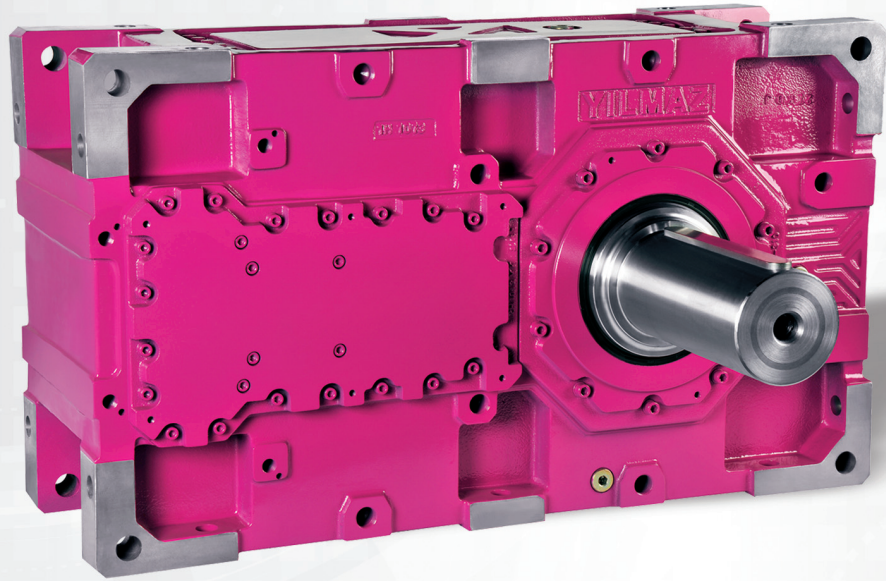
3 Kademeli Redüktörler ölçü tablosudur.  
Dimensions table of gearboxes with 3 stages.

KR	Montaj Ölçüleri Dimensions for Mounting												Dış Boyutlar Dimensions of Outline					Mil Ölçüleri Dimensions of Shaft																			
	a	b	c	f	s1	g g1	e e1	h h1	h2 m	m1 j	p p1	p2 w	z z1	X	k	k1	n	n1	d	d1	t t1	u u1	l M	l1 l2													
KR273.00 KR273.01 KR273.04	63													-	431	-	116	97	35 (H7)	35 (k6)	10	10	38.3	38	157 M12	15	60										
	71													-	449,5	570	138	110																			
	80													-	478	598	156	118																			
	90S	195	205	145	120	11	130	95	130	55	7.5	112	93	15	95	2.5	14	71										167	141	160							
	90L														-	506	631	176										126									
100L														-	531	656	176	126																			
112M														-	572	707	194	135																			
														4,5	595	730	218	146																			
														-	487	607	138	110																			
														-	515	635	156	118																			
														-	544	669	176	126																			
														-	569	694	176	126																			
														-	609	744	194	135																			
														-	632	767	218	146																			
														1,3	686	831	258	168																			
														1,3	724	869	258	168																			
														-	572	692	156	118																			
														-	600	725	176	126																			
														-	625	750	176	126																			
														-	663	798	194	135																			
														-	689	824	218	146																			
														-	738	883	258	168																			
														-	776	921	258	168																			
														-	851	1021	310	225																			
														-	895	1065	310	225																			
														7	912	1082	348	241																			
														7	950	1120	348	241																			
														-	711,5	846,5	194	135																			
														-	734,5	869,5	218	146																			
														-	788,5	933,5	258	168																			
														-	826,5	971,5	258	168																			
														-	901,5	1071,5	310	225																			
														-	945,5	1115,5	310	225																			
														-	962	1132	348	241																			
														-	1000	1170	348	241																			
														-	790	839	194	135																			
														-	813	948	218	146																			
														-	867	1012	258	168																			
														-	905	1050	258	168																			
														-	979	1149	310	225																			
														-	1023	1193	310	225																			
														-	1037	1207	348	241																			
														-	1075	1245	348	241																			
														-	1117	1317	390	275																			
														-	1143	-	433	285																			
														-	1168	-	433	285																			
														-	938	1083	258	168																			
														-	976	1121	258	168																			
														-	1052	1222	310	225																			
														-	1096	1266	310	225																			
														-	1113	1283	348	241																			
														-	1151	1321	348	241																			
														-	1190	1390	390	275																			
														-	1217	-	433	285																			
														-	1242	-	433	285																			
														-	1346	-	480	322																			
														-	1156	1326	310	225																			
														-	1200	1370	310	225																			
														-	1216	1386	348	241																			
														-	1254	1424	348	241																			
														-	1293	1493	390	275																			
														-	1309	-	433	285																			
														-	1334	-	433	285																			
														-	1437	-	480	322																			
														-	1498	-	544	350																			
														-	1498	-	544	350																			

# H Serisi Series



## Monoblok Yatık Tip Redüktörler Monoblock Horizontal Type Gear Units

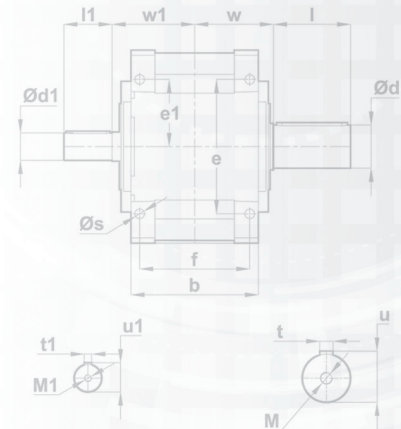
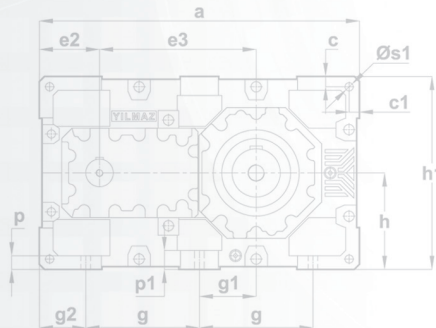


### 14 farklı büyüklükte,

Moment Aralığı : 2500-165.000 Nm  
Devir Aralığı : 0,1-250 d/dak  
Kademe Sayısı : 2-4

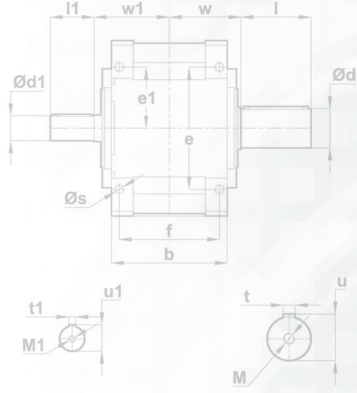
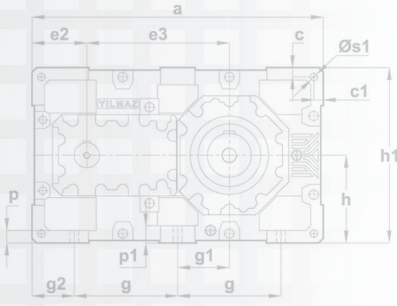
### 14 different sizes,

Torque Range : 2500-165.000 Nm  
Speed Range : 0,1-250 rpm  
Stage Number : 2-4





# H Serisi Series



## H Serisi

Helisel ve/veya konik dişliye sahip ağır hizmet tipi redüktörlerdir. Giriş ve çıkış milleri birbirine paralel veya dik olabilir. Her yönden ayak bağlantı yerleri bulunur. Gövde büyüklüğüne göre flanşlı olarak kullanılabilir.

H serisi helisel dişli monoblok yatık tip redüktörler yüksek teknoloji ile üretilmiş yüksek kaliteli redüktörleridir. Redüktör içinde bulunan tüm mekanik elemanlar güncel yazılımlar ile analiz edilmiş ve en yüksek güvenilirlik hedeflenmiştir.

### H Serisi Redüktörlerin Avantajları

- Çok yönlü bağlanabilme,
- Doğrudan motor akuplesi,
- Flanşlı bağlantı imkanları (IEC motor bağlantı flanşı),
- Çok çeşitli yağlama ve keçe dizayn opsiyonları,
- Çeşitli soğutma opsiyonları (eşanjör, radyatör, serpantin, fan),
- Kilit, sıkma bilezik gibi seçenekler.

Tüm modellerde extruder uygulamaları için özel çözümler mevcuttur. Yılmaz Redüktör bu konuda bir ilki gerçekleştirerek Dünya'da ilk tam monoblok yatık extruder modelini üretmiştir.

## H Series

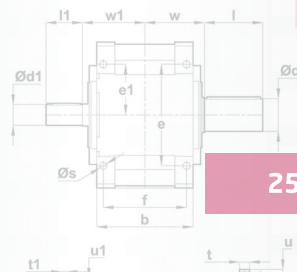
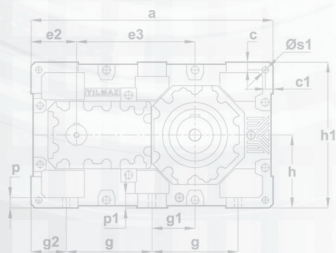
H series gearboxes are helical or/and bevel geared industrial gearboxes. The input and output shafts can be arranged parallel or perpendicular to each other. The gearbox can be mounted by using of the foot connections on each side. Flange connections are optional.

H series horizontal type helical gear boxes are heavy industry gearboxes which is manufactured with high technology at highest quality. All mechanical parts are analysed with up-to-date software and reliability is assured.

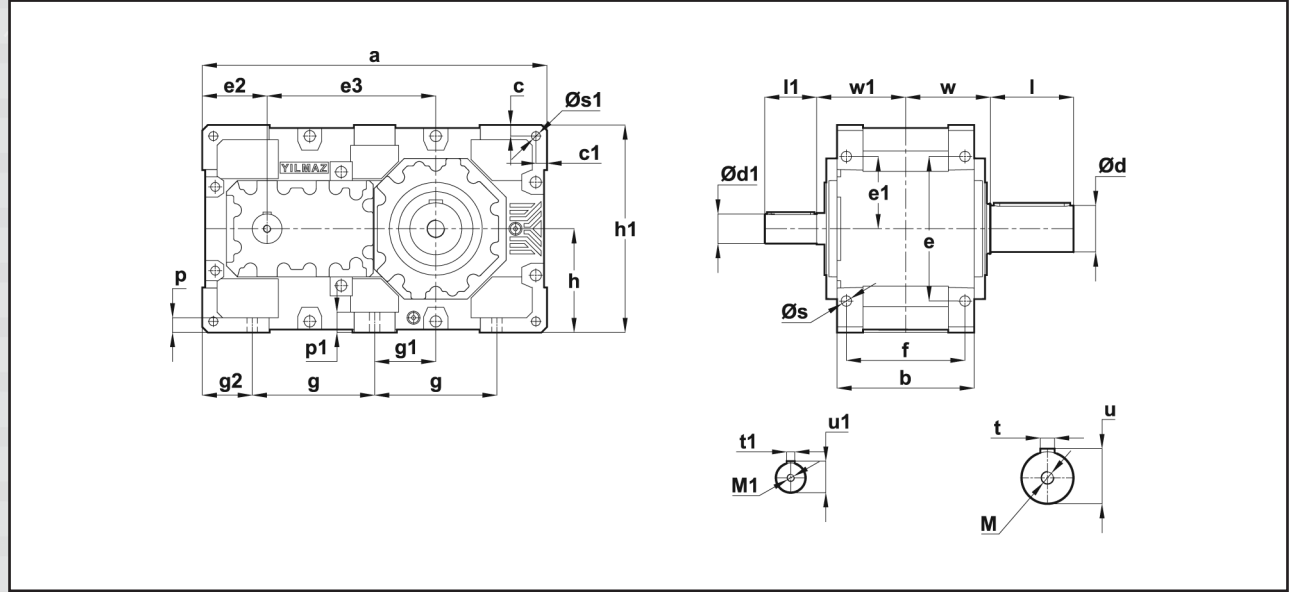
### The advantages of H Series gearboxes:

- Assembly possibilities from each side,
- Direct electric motor connection,
- IEC motor connection flange,
- Lubrication options and different sealing designs,
- Cooling options (heat exchanger, cooling coil, fan),
- Options like backstop and shrink disc.

Special solutions for extruder applications are provided on each size and ratio. YILMAZ REDUKTOR is proud of putting the first complete single housing extruder on the market.



# H Serisi Series



2 Kademeli Redüktörler ölçü tablosudur  
Dimensions table of gearboxes with 2 stages.

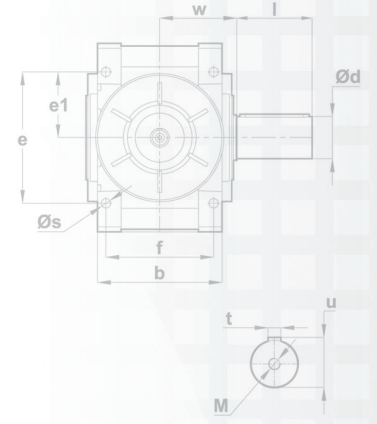
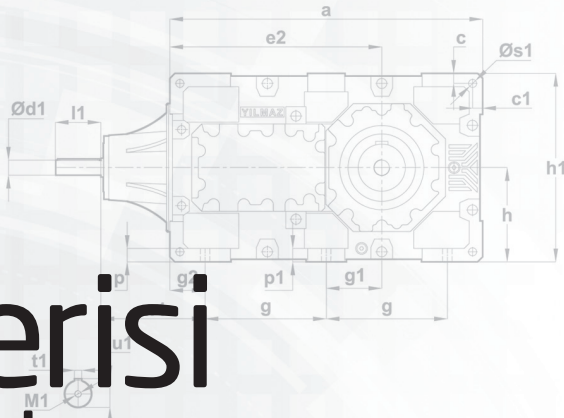
	Montaj Ölçüleri Dimensions for Mounting												Mil Ölçüleri Dimensions of Shaft					
	a	b	c c1	e e1	e2 e3	h h1	g	g1 g2	w w1	s s1	p p1	f	d	d1 (max.)	t t1	u u1	l l1	M M1
HT0322.01	515	215	22.5 20	230 115	105 255	175 350	187.5	102,5 70	140 152	19 19	28 28	180	70	45	20 14	74.5 48.5	140 90	M20 M16
HT0422.01	565	215	22.5 22.5	270 135	105 270	200 400	207.5	92,5 75	140 152	19 17	28 28	180	80	45	22 14	85 48.5	170 90	M20 M16
HT0522.01	640	255	22.5 22.5	275 137.5	120 315	200 400	245	115 75	165 195	19 19	28 28	220	100	55	28 16	106 59	210 100	M24 M20
HT0622.01	720	255	22.5 22.5	300 150	120 350	230 460	280	110 80	165 195	19 19	30 30	220	110	55	28 16	116 59	210 100	M24 M20
HT0722.01	785	300	25 25	310 155	150 385	230 460	297.5	142.5 95	195 210	24 19	35 35	260	120	70	32 20	127 74.5	210 140	M24 M20
HT0822.01	890	300	30 30	360 180	150 430	280 560	340	135 105	195 210	24 28	35 40	260	130	70	32 20	137 74.5	250 140	M24 M20
HT0922.01	930	370	30 30	390 195	175 455	280 560	360	165 105	235 240	24 28	40 40	320	140	80	36 22	148 85	250 140	M30 M20
HT1022.01	1025	370	35 35	420 210	175 500	320 640	395	162.5 117.5	235 240	28 32	40 40	320	160	80	40 22	169 85	300 140	M30 M20
HT1122.01	1105	430	35 35	440 220	215 545	320 640	425	207.5 127.5	270 275	35 24	40 50	370	170	95	40 25	179 100	300 160	M30 M24
HT1222.01	1260	430	40 40	530 265	215 615	400 800	490	200 140	270 275	35 30	50 50	370	180	95	45 25	190 100	300 160	M30 M24
HT1322.01	1320	550	95 95	600 300	250 665	440 880	545	255 115	335 330	35 35	60 60	475	200	100	45 28	210 106	350 205	M30 M24
HT1422.01	1455	550	85 95	600 300	250 730	440 880	600	252.5 127.5	335 330	35 35	60 60	475	220	100	50 28	231 106	350 205	M30 M24
HT1522.01	1580	625	110 110	680 340	303 790	500 1000	668	303 122	380 365	42 42	70 70	535	230	120	50 32	241 127	410 210	M36 M24
HT1622.01	1640	625	110 110	680 340	285 825	500 1000	655	290 165	380 365	42 42	70 70	535	240	120	56 32	252 127	410 210	M36 M24



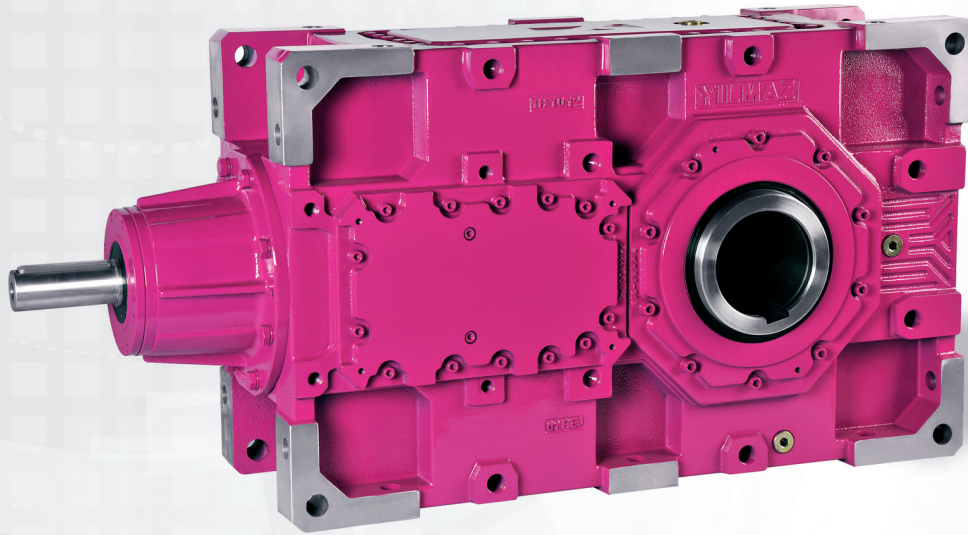
**YILMAZ**  
**REDÜKTÖR**



# B Serisi Series



## Monoblok Konik Tip Yatık Redüktörler Monoblock Bevel Horizontal Type Gear Unit

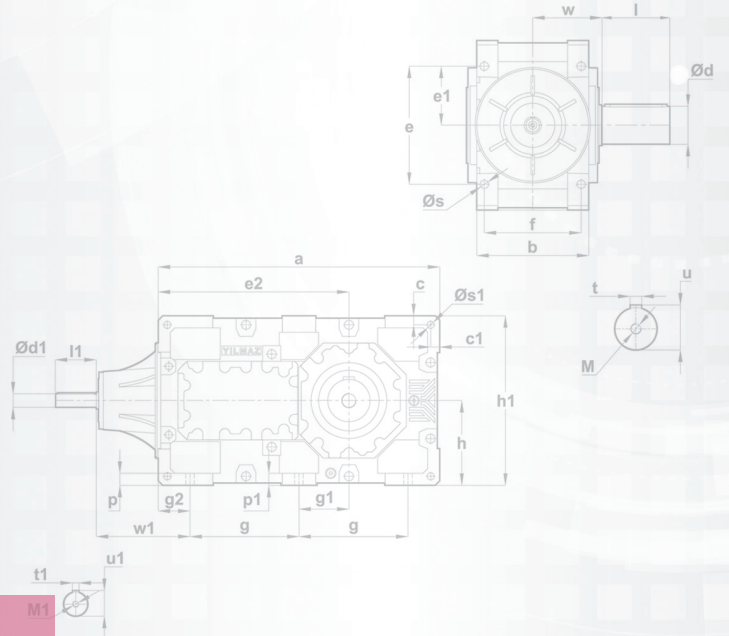


### 13 farklı büyüklükte,

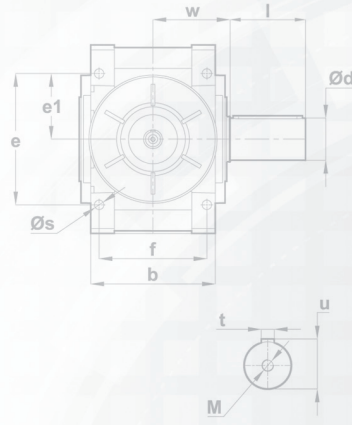
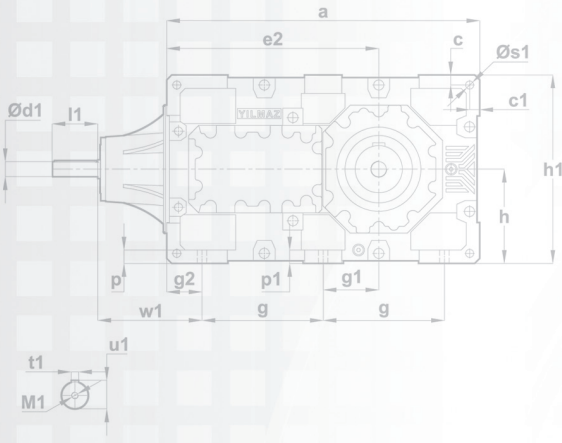
Moment Aralığı : 5.000-165.000 Nm  
Devir Aralığı : 0,1-115d/dak  
Kademe Sayısı : 2-4

### 13 different sizes,

Torque Range : 5.000-165.000 Nm  
Speed Range : 0,1-115 rpm  
Stage Number : 2-4



# B Serisi Series



## B Serisi

B serisi redüktörler konik girişli yatık tip endüstriyel redüktörlerdir. Giriş çıkış milleri birbirine diktir.

### B Serisi Redüktörlerin Avantajları

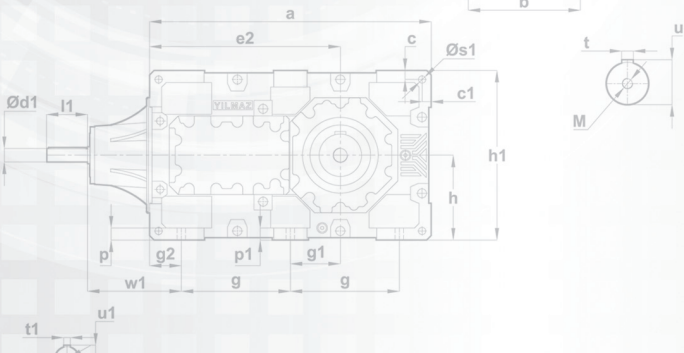
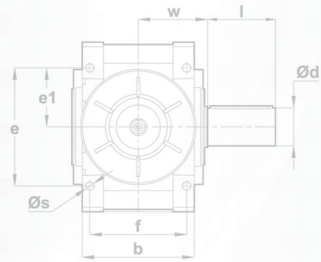
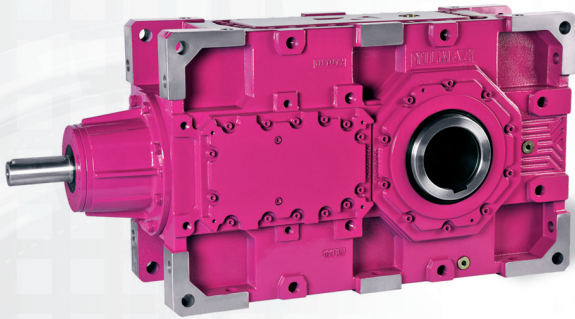
- Çok yönlü bağlanabilme,
- Doğrudan motor akuplesi,
- Flanşlı bağlantı imkanları (IEC motor bağlantı flanşı),
- Çok çeşitli yağlama ve keçe dizayn opsiyonları
- Çeşitli soğutma opsiyonları (eşanjör, radyatör, serpantin, fan),
- Kilit, sıkma bilezik gibi seçenekler.

## B Series

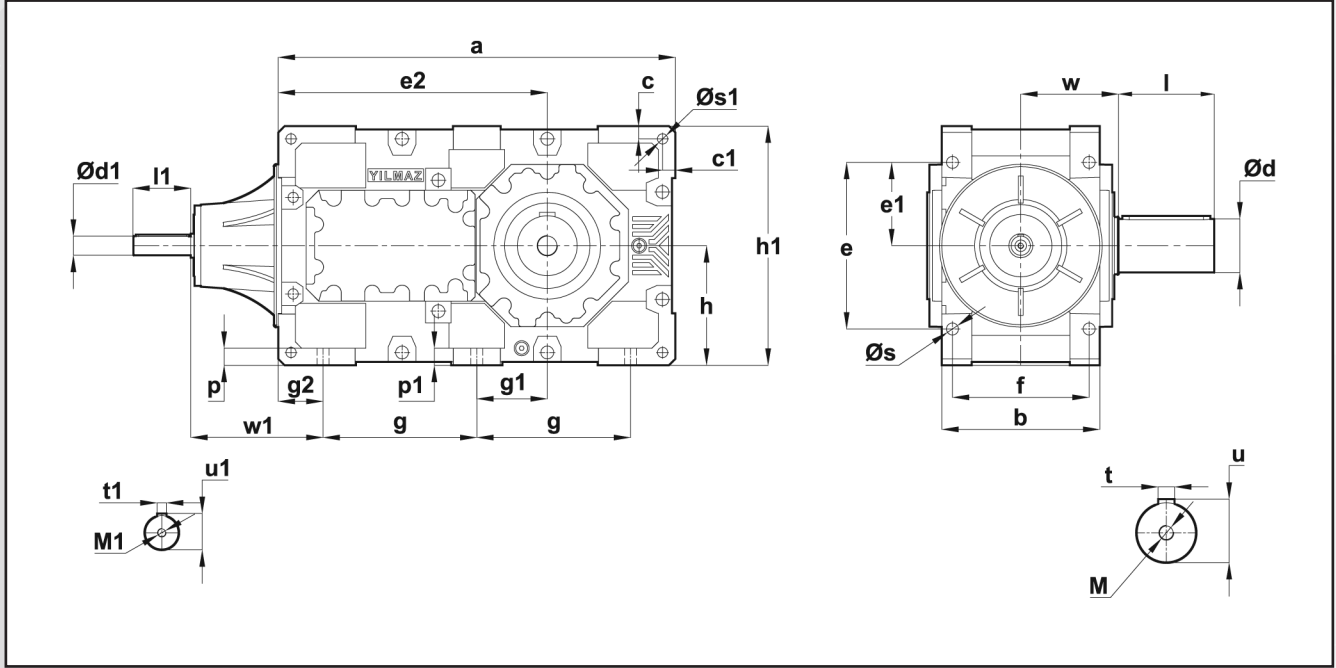
B series gearboxes are industrial gearboxes with bevel gear input. The input and output shafts are perpendicular to each other.

### The advantages of B Series gearboxes:

- Assembly possibilities from each side,
- Direct electric motor connection,
- IEC motor connection flange,
- Lubrication options and different sealing designs,
- Cooling options (heat exchanger, cooling coil, fan),
- Options like backstop and shrink disc.



# B Serisi Series

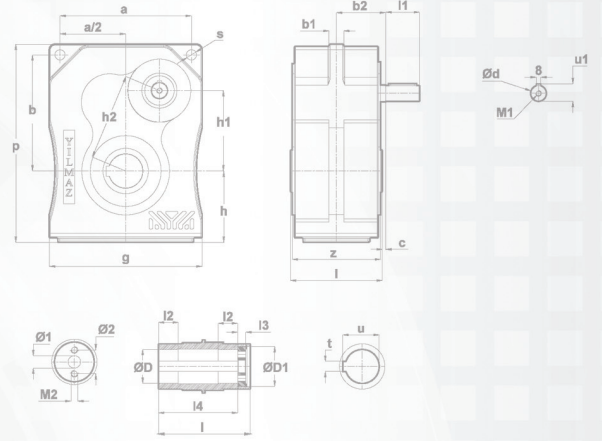


BT	Montaj Ölçüleri Dimensions for Mounting													Mil Ölçüleri Dimensions of Shaft					
	a	b	c c1	e e1	e2	h h1	g	g1 g2	w	w1	s s1	p p1	f	d	d1 (max.)	t t1	u u1	l l1	M M1
BT0323.01	515	215	22.5 22.5	230 115	360	175 350	187.5	102,5 70	140	210	19 19	28 28	180	70	30	20 8	74.5 33	140 90	M20 M10
BT0423.01	565	215	22.5 22.5	270 135	375	200 400	207.5	92,5 75	140	215	19 19	28 28	180	80	30	22 8	85 33	170 90	M20 M10
BT0523.01	640	255	22.5 22.5	275 137.5	435	200 400	245	115 75	165	225	19 19	28 28	220	100	35	28 10	106 38	210 100	M24 M12
BT0623.01	720	255	22.5 22.5	300 150	470	230 460	280	110 80	165	230	19 19	30 30	220	110	35	28 10	116 38	210 100	M24 M12
BT0723.01	785	300	25 25	310 155	535	230 460	297.5	142.5 95	195	265	24 19	35 35	260	120	45	32 14	127 48.5	210 130	M24 M16
BT0823.01	890	300	30 30	360 180	580	280 560	340	135 105	195	275	24 28	35 40	260	130	45	32 14	137 48.5	250 130	M24 M16
BT0923.01	930	370	30 30	390 195	630	280 560	360	165 105	235	290	24 28	40 40	320	140	55	36 16	148 59	250 130	M30 M20
BT1023.01	1025	370	35 35	420 210	675	320 640	395	162.5 117.5	235	302.5	28 32	40 40	320	160	55	40 16	169 59	300 130	M30 M20
BT1123.01	1105	430	35 35	440 220	760	320 640	425	207.5 127.5	270	337.5	35 24	40 50	370	170	70	40 20	179 74.5	300 160	M30 M20
BT1223.01	1260	430	40 40	530 265	830	400 800	490	200 140	270	350	35 30	50 50	370	180	70	45 20	190 74.5	300 160	M30 M20
BT1323.01	1320	550	95 95	600 300	915	440 880	545	255 115	335	355	35 35	60 60	475	200	80	45 22	210 85	350 165	M30 M20
BT1423.01	1455	550	95 95	600 300	980	440 880	600	252.5 127.5	335	507,5	35 35	60 60	475	220	80	50 22	231 85	350 165	M30 M20
BT1523.01	1580	625	125 115	680 340	1075	500 1000	668	285 122	380	442	42 42	70 70	535	230	90	50 25	241 95	410 165	M36 M24
BT1623.01	1640	625	110 110	680 340	1110	500 1000	655	290 165	380	650	42 42	70 70	535	240	90	56 25	252 95	410 165	M36 M24



# T

## Serisi Series



## Delik Milli Motorsuz Redüktörler Hollow Shaft Gear Unit

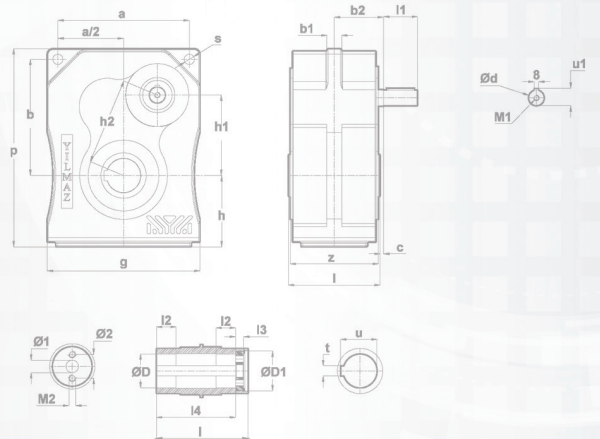


### 10 farklı büyüklükte,

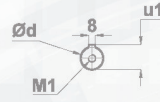
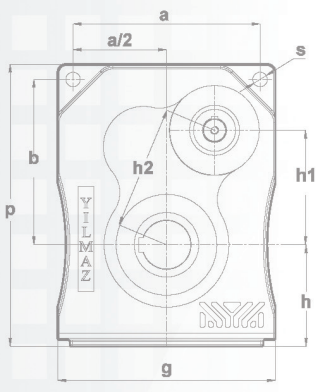
Moment Aralığı : 200-18.000 Nm  
Devir Aralığı : 46-280 d/dak  
Kademe Sayısı : 2

### 10 different sizes,

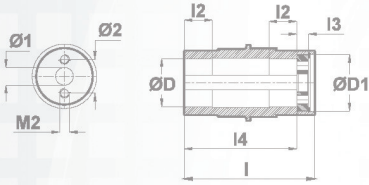
Torque Range : 200-18.000 Nm  
Speed Range : 46-280 rpm  
Stage Number : 2







# T Serisi Series



## T Serisi

TT serisi redüktörler konveyör uygulamalarında kullanılmak üzere üretilen 2 kademeli motorsuz monoblok helisel dişli redüktörlerdir. Müşteri isteğine bağlı olarak mekanik kilit uygulaması mevcuttur.

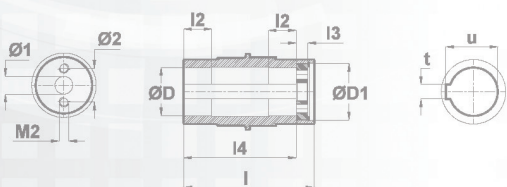
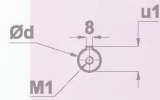
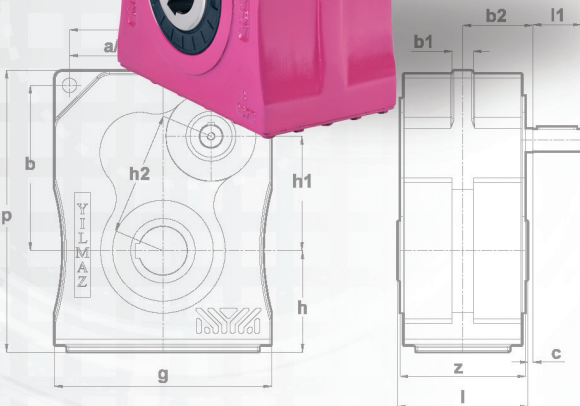
Makine üzerine bağlantısı redüktör üzerindeki tork kolu bağlantı delikleri ile yapılabilir. Gövde GG20 pik döküm; dişli malzemesi yüksek kalitede taşlanmış ve sertleştirilmiştir.



## T Series

TT series are 2 staged monoblock helical gearboxes which are manufactured for using in conveyor applications. Backstop are available according to customer requirements.

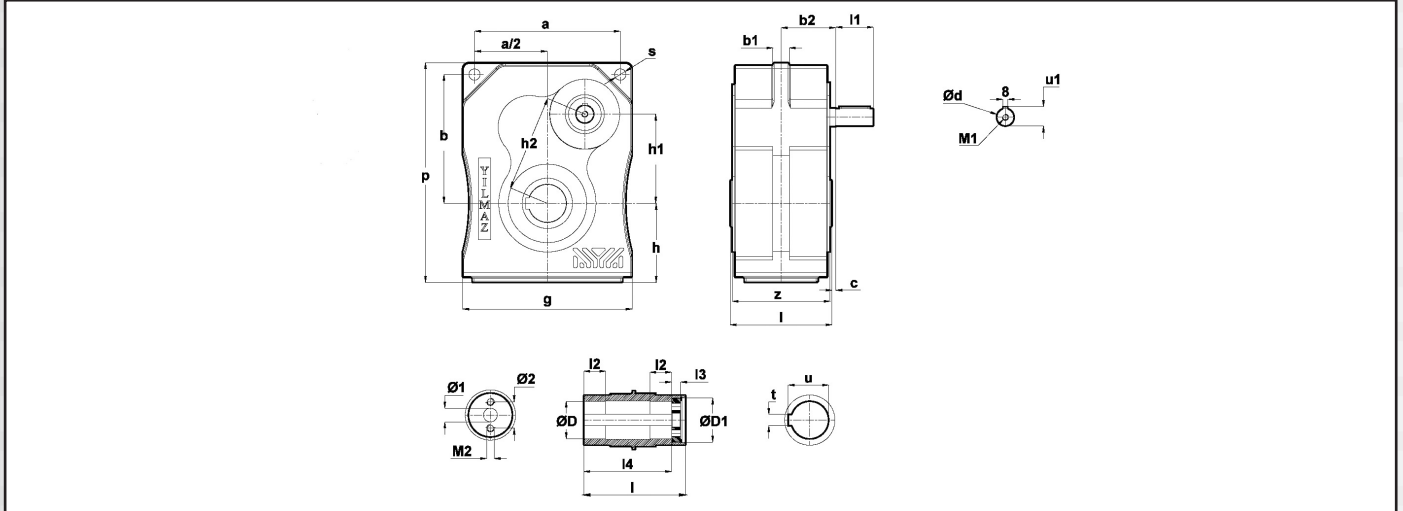
The gearbox are mounted to the machine with torque arm. Housing material is GG20 cast iron; gear grinded for high quality and is hardened.





Serisi  
Series

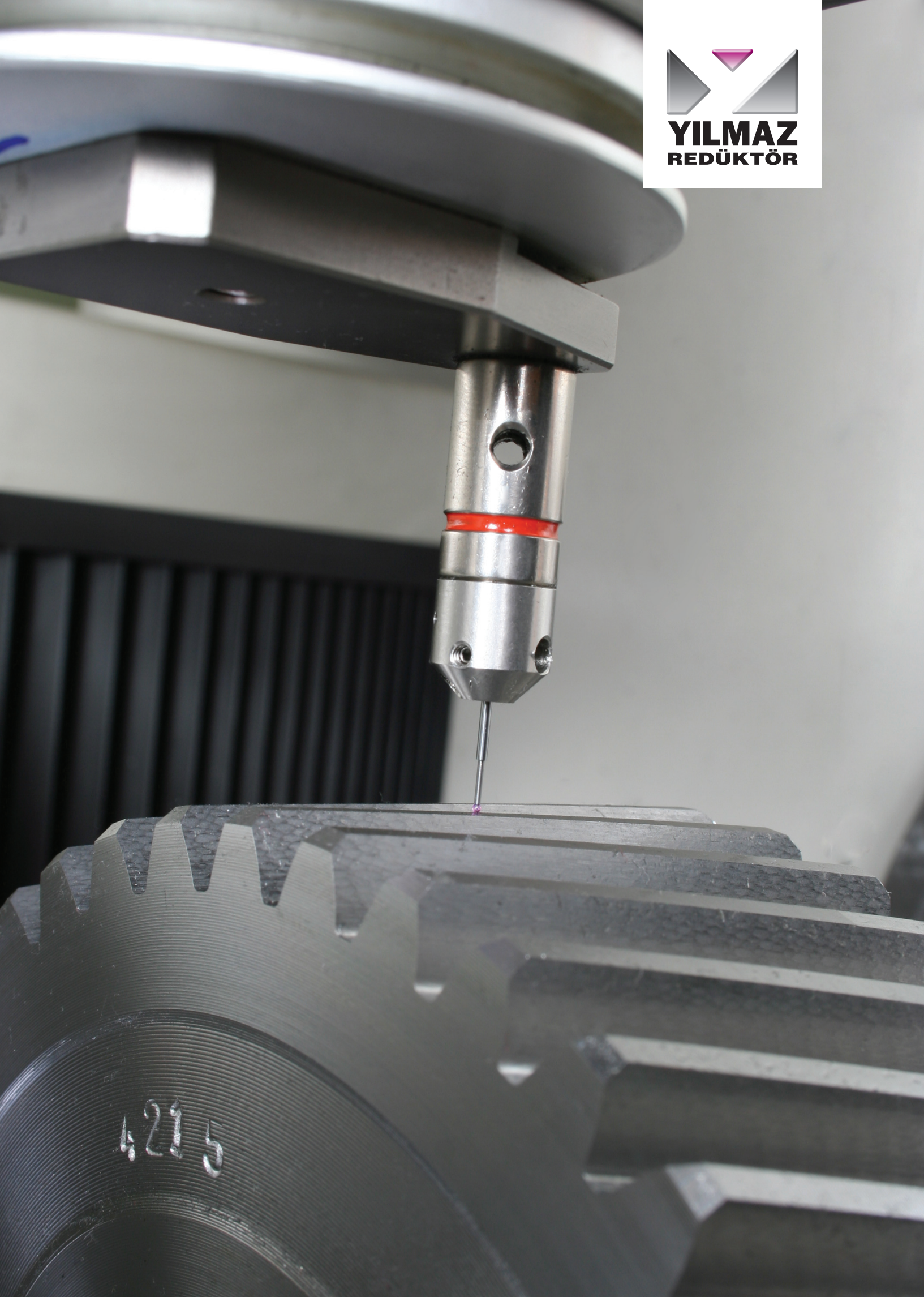
## Monoblok Yatık Tip Redüktörler Monoblock Horizontal Type Gear Units



TT	Montaj Ölçüleri Dimensions for Mounting														Mil Ölçüleri Dimensions of Shaft													
	a	b	b1	b2	c	g	h	h1	h2	p	s	z	D (G7)	D1	t	u	l	l1	l2	l3	d	t1	u1	M1	l4	Ø1	Ø2	M2
TT17	132	118	16	63	6	152	72	83	88	200	10	110	30	38	8	33.3	114	40	25	10	19	6	21.5	M6	98	11	22	M6
TT27	160	138	20	73	6	188	95	96	102	245	12	130	30	48	10	38.3	134	40	30	12	19	6	21.5	M6	114	17	30	M8
TT28	174	152	20	73	6	206	97	102	109	262	14	130	40	60	12	43.3	134	50	35	12	24	8	27	M8	114	17	28	M8
TT37	200	170	24	78	6	230	110	108	119	295	16	138	45	65	14	48.8	144	50	35	12	24	8	27	M8	124	22	34	M8
TT47	232	205	26	87	6	270	120	142	154	344	18	156	50	70	14	53.8	162	60	40	14	28	8	31	M10	140	22	36	M8
TT57	288	254	30	106	6	330	154	175	193	429	22	192	60	85	18	64.4	200	80	45	16	38	10	43	M12	175	22	42	M12
TT67	332	292	34	120.5	8	380	178	196	218	494	24	217	70	95	20	74.9	225	110	50	18	42	12	45	M16	193	22	48	M16
TT77	378	344	38	140	10	430	202	228	250	572	26	252	80	115	22	85.4	260	110	55	20	48	14	51.5	M16	227	26	54	M20
TT87	442	395	42	162	12	500	232	255	285	656	28	290	100	145	28	106.4	300	110	60	20	55	16	59	M20	268	26	70	M20
TT97	496	462	46	177	12	560	266	279	315	760	32	320	125	150	32	132.4	330	110	65	20	55	16	59	M20	293	33	90	M24

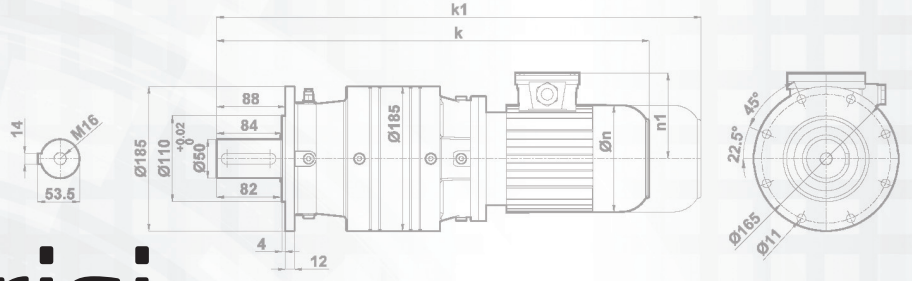
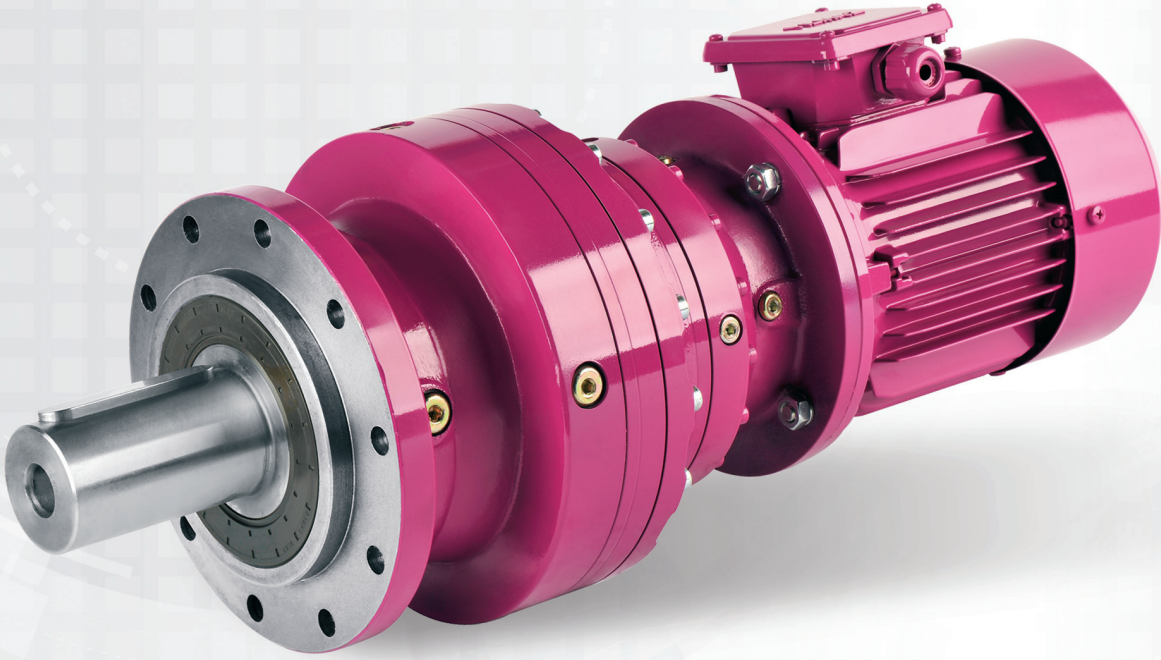


**YILMAZ**  
**REDÜKTÖR**



# P Serisi Series

## Planet Redüktörler Planetary Gearboxes

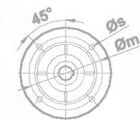
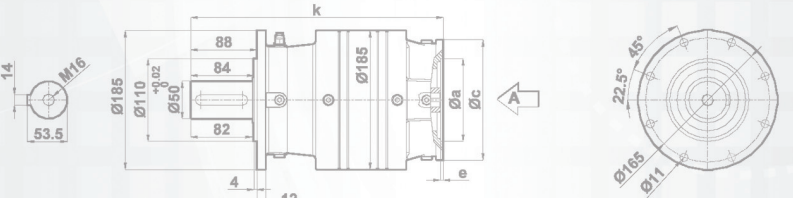


### 10 farklı büyüklükte,

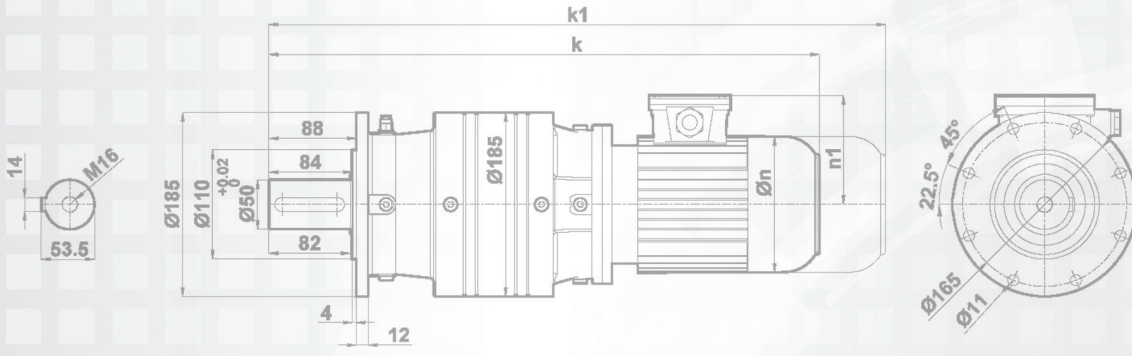
Moment Aralığı : 1.000-50.000 Nm  
Devir Aralığı : 3,5-3000d/dak  
Kademe Sayısı : 1-4

### 10 different sizes,

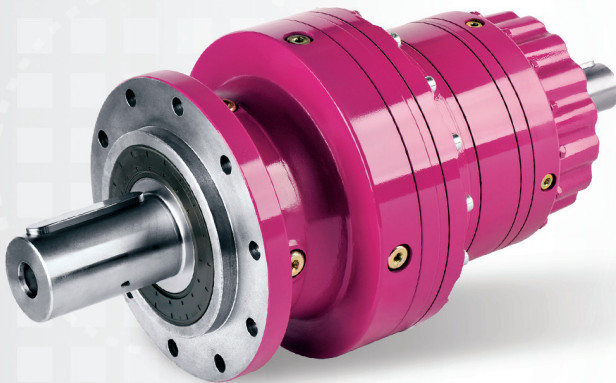
Torque Range : 1.000-50.000 Nm  
Speed Range : 3,5-3000 rpm  
Stage Number : 1-4



A Bakışı / A View



# P Serisi Series



## P Serisi

P serisi redüktörler çok amaçlı modüler yapıda üretilen endüstriyel redüktörlerdir. Yüksek moment ve düşük ağırlık gereken mobil inşaat makineleri, mobil ve istasyonel kaldırma makineleri, rüzgar enerji çözümleri gibi endüstriyel uygulamalarda kullanılmaktadır. Hidro motor, AC ve DC elektrik motor, servo motor tahrik üniteleri ile hareket verilir.

### P Serisi Redüktörlerin Avantajları

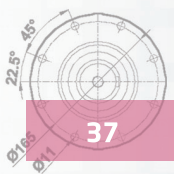
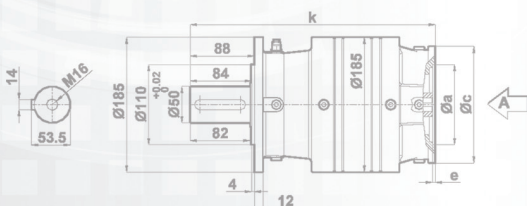
- Flanşlı ve ayaklı tipler
- Konik girişli çeşitler
- E ve K serisi redüktör akupleleri,
- Esnek montaj şekilleri
- Kuvvetlendirilmiş çıkış rulman grubu
- DIN5480, DIN5482 çoklu kamalı yada sıkma bilezik çıkış opsiyonu,
- Soğutma opsiyonları

## P Series

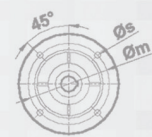
P series gearboxes are multi purpose industrial gearboxes manufactured in modular bases. The most application areas are mobile construction machinery, mobile and stationary hoisting machinery, wind energy solutions, which are high torque low weight required industrial applications. It can be driven by various drive units like hydro-motor, AC or DC electric motor, servo motor.

### The advantages of P Series gearboxes:

- Types with flange and foot
- Designs with bevel gear input
- Connecting with E and K series
- Flexible mounting positions
- Output bearing set with long lifetime
- DIN5480, DIN5482 spline shaft or shrink disc output options
- Cooling options



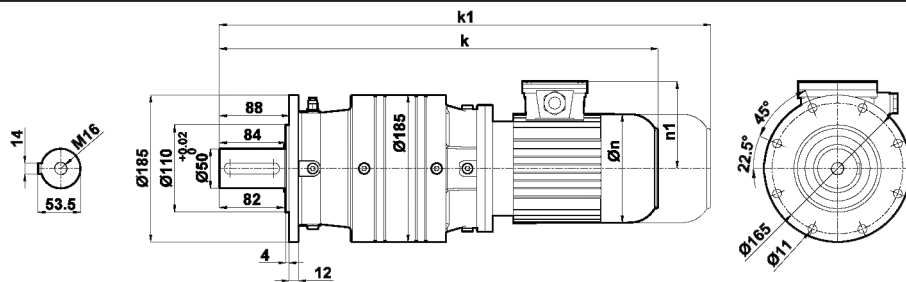
37



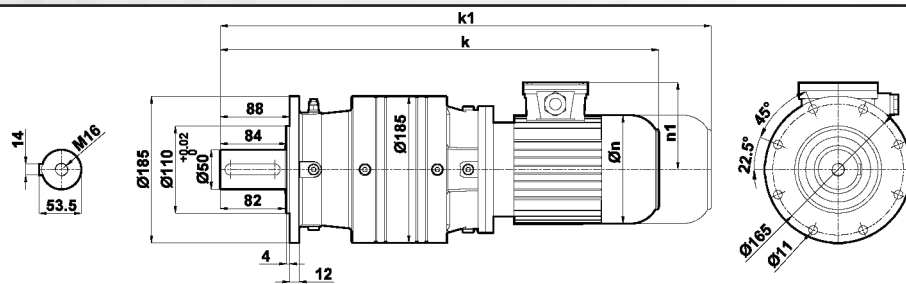
A Bakışı / A View



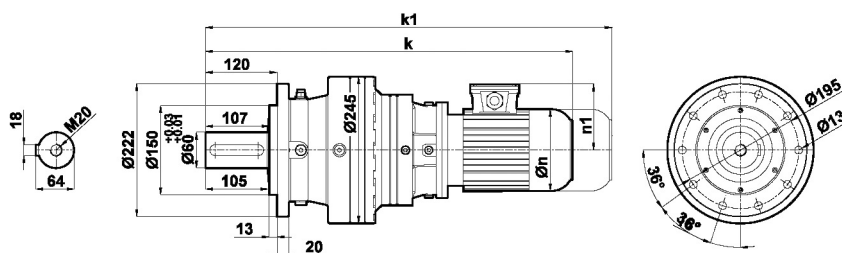
# P Serisi Series



PV	71		80		90S		90L		100L		112M		132S		132M	
	k	k1	k	k1	k	k1	k	k1	k	k1	k	k1	k	k1	k	k1
PV1101L.01	503	623	542	662	562	687	587	712	629	764	649	784	713	858	751	896
PV1102L.01	555	675	594	714	614	739	639	764	681	816	701	836	765	910	803	948
PV1103L.01	606	726	645	765	665	790	690	815	732	867	752	887	816	961	854	999
PV1104L.01	658	778	697	817	717	842	742	867	784	919	804	939	868	1013	906	1051
n/n1	138/110		156/118		176/126		176/126		194/135		218/146		257/168		257/168	

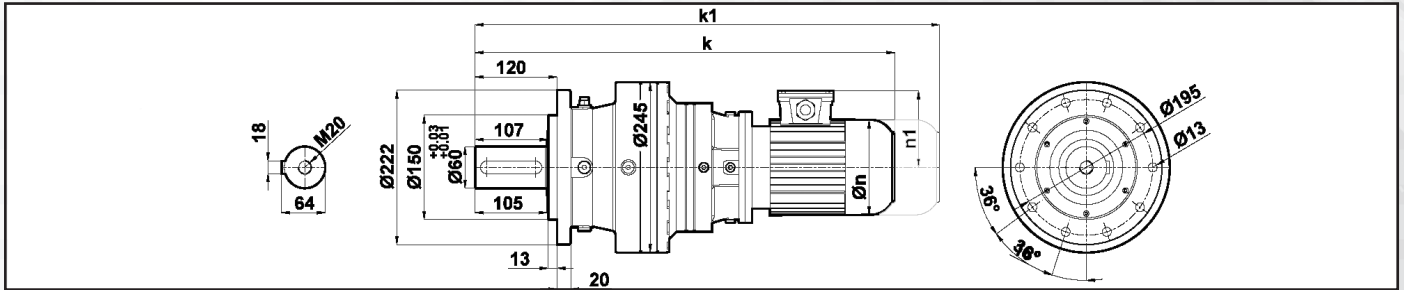


PV	71		80		90S		90L		100L		112M		132S		132M	
	k	k1	k	k1	k	k1	k	k1	k	k1	k	k1	k	k1	k	k1
PV1201L.01	523	643	562	682	582	707	607	732	649	784	669	804	733	878	771	916
PV1202L.01	575	695	614	734	634	759	659	784	701	836	721	856	785	930	823	968
PV1203L.01	626	746	665	785	685	810	710	835	752	887	772	907	836	981	874	1019
PV1204L.01	678	798	717	837	737	862	762	887	804	939	824	959	888	1033	926	1071
n/n1	138/110		156/118		176/126		176/126		194/135		218/146		257/168		257/168	

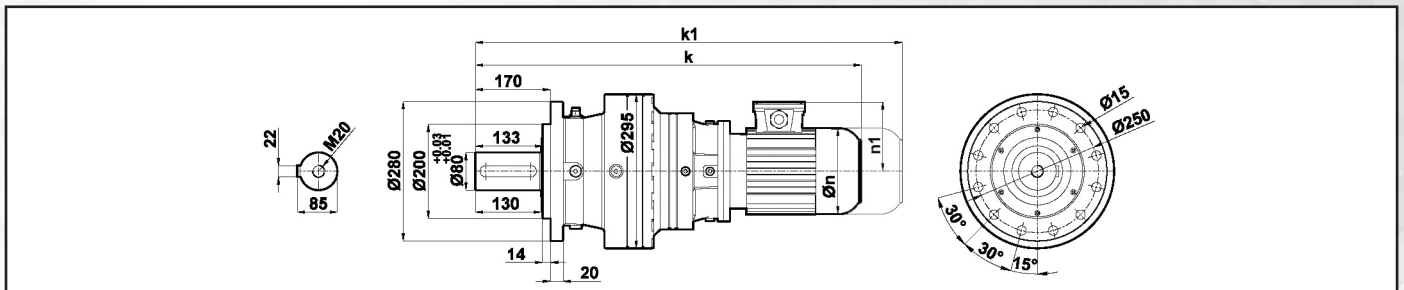


PV	71		80		90S		90L		100L		112M		132S		132M		160L		160M		180L		180M		200L		
	k	k1	k	k1	k	k1	k	k1	k	k1	k	k1	k	k1	k	k1	k	k1	k	k1	k	k1	k	k1	k	k1	
PV1501L.01	-	-	-	-	-	-	-	-	-	-	-	-	774	918,5	812	956,5	959	1129	915	1085	1010	1180	972	1142	1062	1262	
PV1502L.01	615	735	654	774	674	799	699	824	741	876	761	896	825	969,5	863	1007,5	-	-	-	-	-	-	-	-	-	-	-
PV1503L.01	667	787	706	826	726	851	751	876	793	928	813	948	877	1022	915	1059,5	-	-	-	-	-	-	-	-	-	-	-
PV1504L.01	718	838	757	877	777	902	802	927	844	979	864	999	928	1073	966	110,5	-	-	-	-	-	-	-	-	-	-	-
n/n1	138/110		156/118		176/126		176/126		194/135		218/146		257/168		257/168		310/225		310/225		348/241		348/241		390/277		

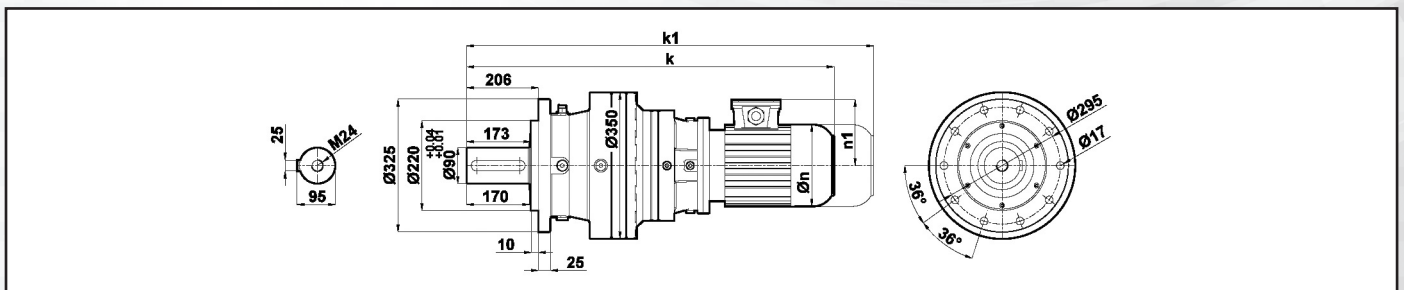
# Planet Redüktörler Planetary Gearboxes



PV	71		80		90S		90L		100L		112M		132S		132M		160L		160M		180L		180M		200L	
	k	k1	k	k1	k	k1	k	k1	k	k1	k	k1	k	k1	k	k1	k	k1	k	k1	k	k1	k	k1	k	k1
PV1601L.01	-	-	-	-	-	-	-	-	-	-	-	-	806	950,5	844	988,5	991	1161	947	1117	1042	1212	1004	1174	1094	1294
PV1602L.01	667	787	706	826	726	851	751	876	793	928	813	948	877	121,5	915	1059,5	-	-	-	-	-	-	-	-	-	-
PV1603L.01	719	839	758	878	778	903	803	928	845	980	865	1000	929	1074	967	1111,5	-	-	-	-	-	-	-	-	-	-
PV1604L.01	770	890	809	929	829	954	854	979	896	1031	916	1051	980	1125	1018	1162,5	-	-	-	-	-	-	-	-	-	-
n/n1	138/110		156/118		176/126		176/126		194/135		218/146		257/168		257/168		310/225		310/225		348/241		348/241		390/277	

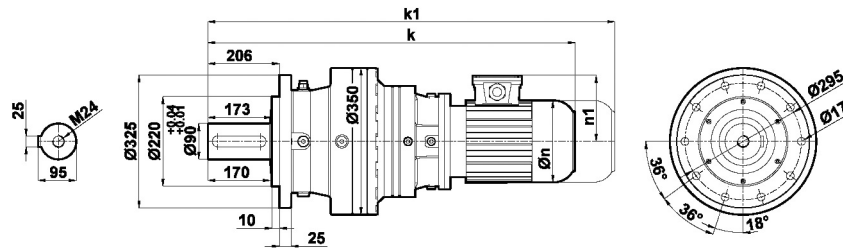


PV	71		80		90S		90L		100L		112M		132S		132M		160L		160M		180L		180M		200L		225S		225M		250M	
	k	k1	k	k1	k	k1	k	k1	k	k1	k	k1	k	k1	k	k1	k	k1	k	k1	k	k1	k	k1	k	k1	k	k1	k	k1		
PV1901L.01	-	-	-	-	-	-	-	-	-	-	-	-	-	-	-	-	1069	1239	1025	1194	1120	1290	1082	1252	1172	1372	1222	-	1247	-	1323	-
PV1902L.01	-	-	-	-	-	-	-	-	-	-	-	-	954	1099	992	1137	1139	1309	1095	1265	1190	1360	1152	1322	1242	1442	-	-	-	-	-	-
PV1903L.01	796	916	835	955	855	980	880	1005	922	1057	942	1077	1006	1151	1044	1189	-	-	-	-	-	-	-	-	-	-	-	-	-	-	-	-
PV1904L.01	847	967	886	1006	906	1031	931	1056	973	1108	993	1128	1057	1202	1095	1240	-	-	-	-	-	-	-	-	-	-	-	-	-	-	-	-
n/n1	138/110		156/118		176/126		176/126		194/135		218/146		257/168		257/168		310/225		310/225		348/241		348/241		390/277		434/285		434/285		480/322	

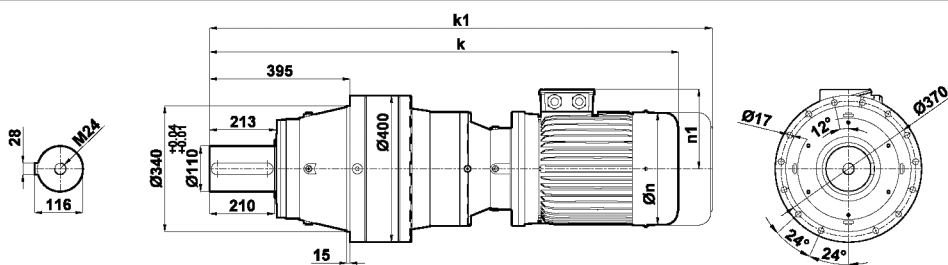


PV	71		80		90S		90L		100L		112M		132S		132M		160L		160M		180L		180M		200L		225S		225M		250M	
	k	k1	k	k1	k	k1	k	k1	k	k1	k	k1	k	k1	k	k1	k	k1	k	k1	k	k1	k	k1	k	k1	k	k1	k	k1		
PV2301L.01	-	-	-	-	-	-	-	-	-	-	-	-	-	-	-	-	-	-	1201	1371	1163	1333	1253	1453	1303	-	1328	-	1404	-		
PV2302L.01	-	-	-	-	-	-	-	-	-	-	-	-	1035	1180	1073	1218	1220	1390	1176	1346	1271	1441	1233	1403	1323	1523	-	-	-	-	-	
PV2303L.01	877	997	916	1036	936	1061	961	1086	1003	1138	1023	1158	1087	1232	1125	1270	-	-	-	-	-	-	-	-	-	-	-	-	-	-	-	
PV2304L.01	928	1048	967	1087	987	1112	1012	1137	1054	1189	1074	1209	1138	1283	1176	1321	-	-	-	-	-	-	-	-	-	-	-	-	-	-	-	
n/n1	138/110		156/118		176/126		176/126		194/135		218/146		257/168		257/168		310/225		310/225		348/241		348/241		390/277		434/285		434/285		480/322	

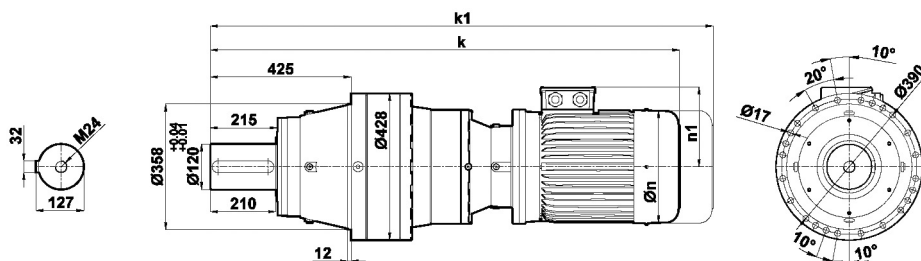
# P Serisi Series



PV	71		80		90S		90L		100L		112M		132S		132M		160L		160M		180L		180M		200L		250M		
	k	k1	k	k1	k	k1	k	k1	k	k1	k	k1	k	k1	k	k1	k	k1	k	k1	k	k1	k	k1	k	k1	k	k1	k
PV2401L.01	-	-	-	-	-	-	-	-	-	-	-	-	-	-	-	-	-	-	-	-	-	1253	1423	1215	1385	1305	1505	1456	-
PV2402L.01	-	-	-	-	-	-	-	-	-	-	-	-	1119	1264	1157	1302	1304	1474	1260	1430	1355	1525	1317	1487	1407	1607	-	-	-
PV2403L.01	981	1101	1020	1140	1040	1165	1065	1190	1107	1242	1127	1262	1191	1336	1229	1374	-	-	-	-	-	-	-	-	-	-	-	-	-
PV2404L.01	1032	1152	1071	1191	1091	1216	1116	1241	1158	1293	1178	1313	1242	1387	1280	1425	-	-	-	-	-	-	-	-	-	-	-	-	-
n/n1	138/110	156/118	176/126	176/126	194/135	218/146	257/168	257/168	310/225	310/225	348/241	348/241	390/277	480/322	-	-	-	-	-	-	-	-	-	-	-	-	-	-	-



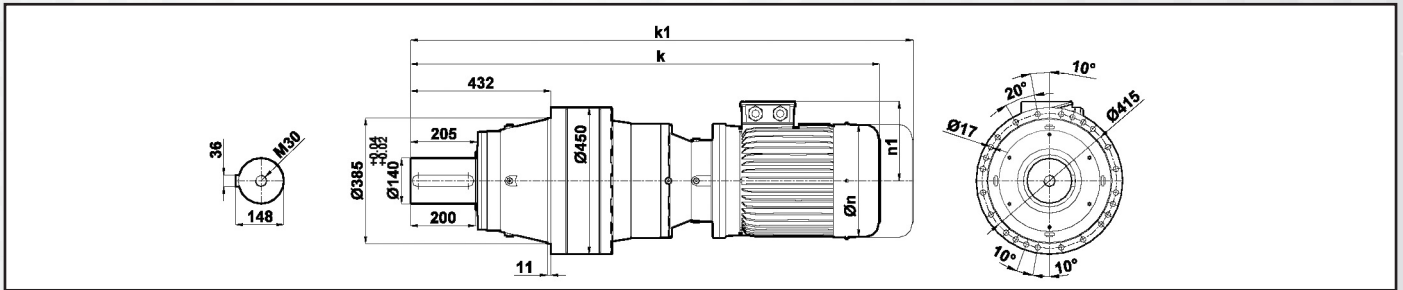
PV	80		90S		90L		100L		112M		132S		132M		160L		160M		180L		180M		200L		225S		225M		250M	
	k	k1	k	k1	k	k1	k	k1	k	k1	k	k1	k	k1	k	k1	k	k1	k	k1	k	k1	k	k1	k	k1	k	k1	k	k1
PV2701L.01	-	-	-	-	-	-	-	-	-	-	-	-	-	-	-	-	-	-	-	-	-	-	1354	1554	1403	-	1428	-	1504	-
PV2702L.01	-	-	-	-	-	-	-	-	-	-	-	-	-	1354	1524	1310	1480	1405	1575	1367	1537	1457	1657	1507	-	1532	-	1608	-	
PV2703L.01	-	-	-	-	-	-	-	-	-	-	1239	1384	1277	1422	1424	1649	1380	1550	1475	1645	1437	1607	1527	1727	-	-	-	-	-	-
PV2704L.01	1120	1240	1140	1265	1165	1290	1207	1342	1227	1362	1291	1436	1329	1474	-	-	-	-	-	-	-	-	-	-	-	-	-	-	-	
n/n1	156/118	176/126	176/126	194/135	218/146	257/168	257/168	310/225	310/225	348/241	348/241	390/277	434/285	434/285	480/322	-	-	-	-	-	-	-	-	-	-	-	-	-	-	



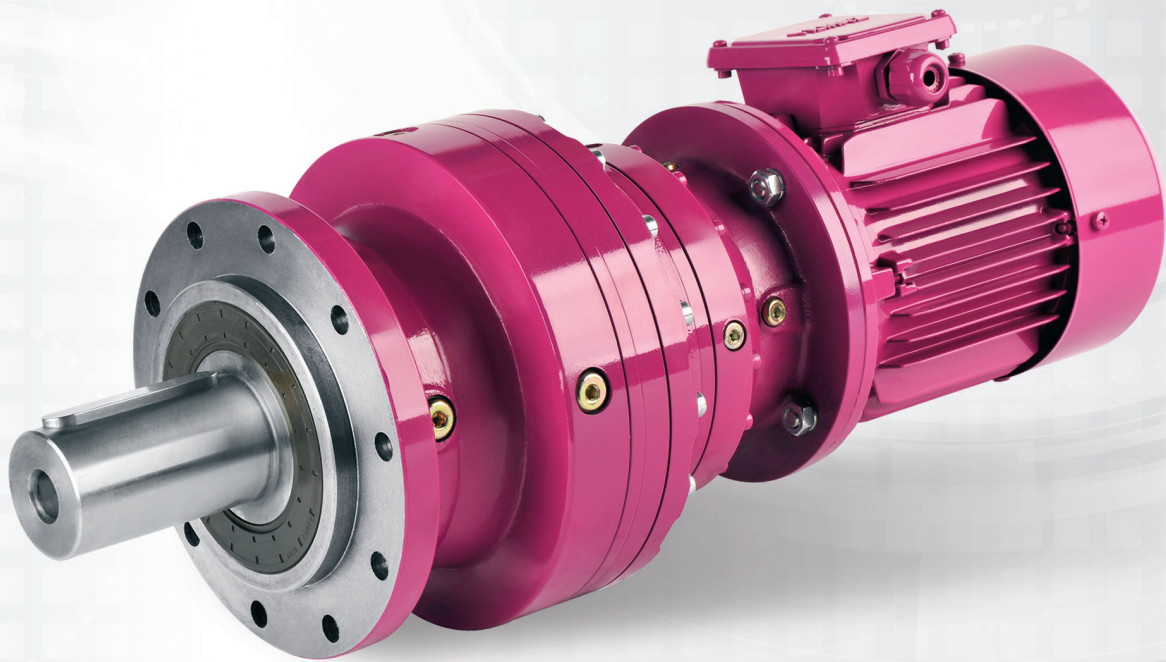
PV	90S		90L		100L		112M		132S		132M		160L		160M		180L		180M		200L		225S		225M		250M		
	k	k1	k	k1	k	k1	k	k1	k	k1	k	k1	k	k1	k	k1	k	k1	k	k1	k	k1	k	k1	k	k1	k	k1	
PV2901L.01	-	-	-	-	-	-	-	-	-	-	-	-	-	-	-	-	-	-	-	-	-	-	-	-	-	-	-	-	
PV2902L.01	-	-	-	-	-	-	-	-	-	-	-	-	-	-	-	-	1480	1650	1442	1612	1532	1732	1582	-	1607	-	1683	-	
PV2903L.01	-	-	-	-	-	-	-	-	1314	1459	1352	1497	1499	1669	1455	1625	1550	1720	1512	1682	1602	1802	-	-	-	-	-	-	-
PV2904L.01	1215	1340	1240	1365	1282	1417	1302	1437	1366	1511	1404	1549	-	-	-	-	-	-	-	-	-	-	-	-	-	-	-	-	
n/n1	176/126	176/126	194/135	218/146	257/168	257/168	310/225	310/225	348/241	348/241	390/277	434/285	434/285	480/322	-	-	-	-	-	-	-	-	-	-	-	-	-	-	



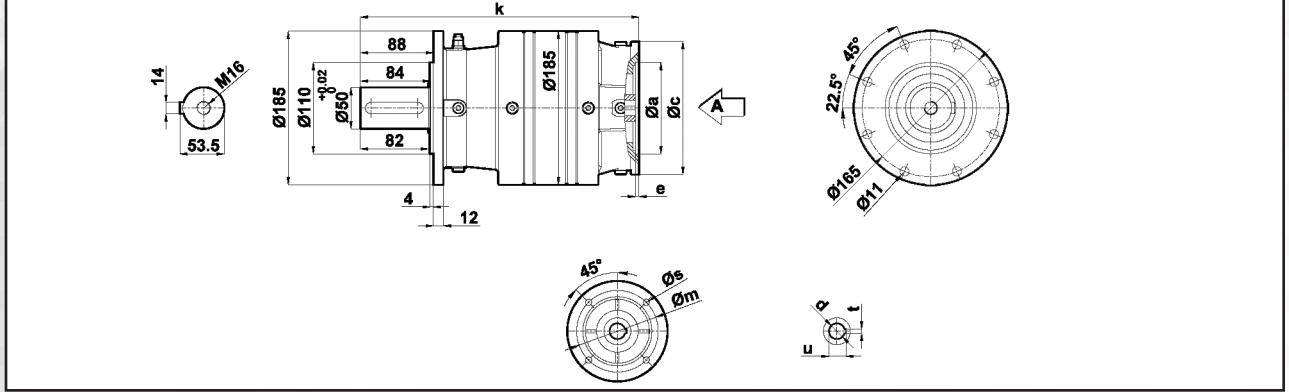
# Planet Redüktörler Planetary Gearboxes



PV	90S		90L		100L		112M		132S		132M		160L		160M		180L		180M		200L		225S		225M		250M		
	k	k1	k	k1	k	k1	k	k1	k	k1	k	k1	k	k1	k	k1	k	k1	k	k1	k	k1	k	k1	k	k1	k	k1	
PV3501L.01	-	-	-	-	-	-	-	-	-	-	-	-	-	-	-	-	-	-	-	-	-	-	-	-	-	-	-	-	-
PV3502L.01	-	-	-	-	-	-	-	-	-	-	-	-	-	-	-	-	1563	1733	1525	1695	1615	1815	1665	-	1690	-	1766	-	
PV3503L.01	-	-	-	-	-	-	-	-	1429	1574	1467	1612	1614	1784	1570	1740	1665	1835	1627	1797	1717	1917	-	-	-	-	-	-	-
PV3504L.01	1349	1474	1374	1499	1416	1551	1436	1571	1500	1645	1538	1683	-	-	-	-	-	-	-	-	-	-	-	-	-	-	-	-	
n/n1	176/126	176/126	176/126	176/126	194/135	194/135	218/146	218/146	257/168	257/168	257/168	257/168	310/225	310/225	310/225	310/225	348/241	348/241	348/241	348/241	390/277	390/277	434/285	434/285	434/285	434/285	480/322	480/322	

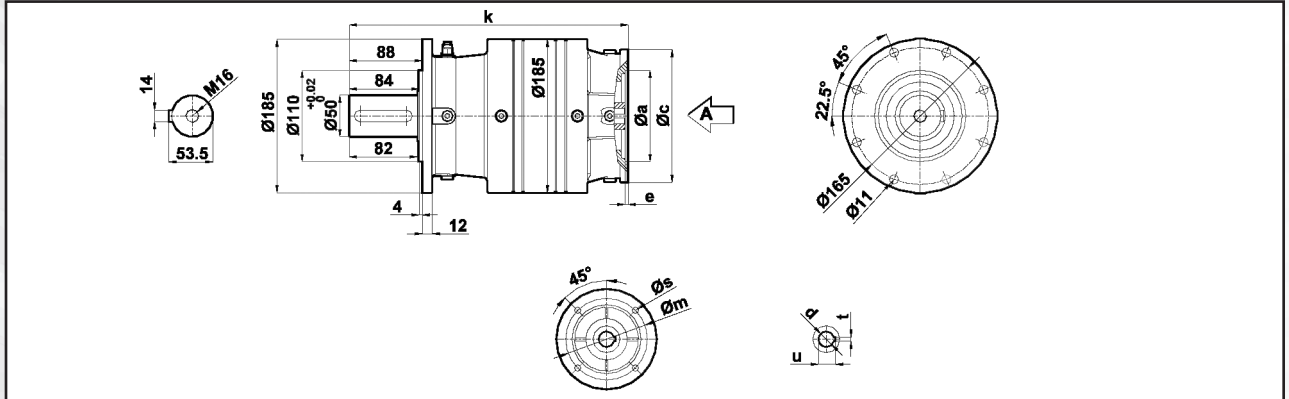


# P Serisi Series



A Bakışı / A View

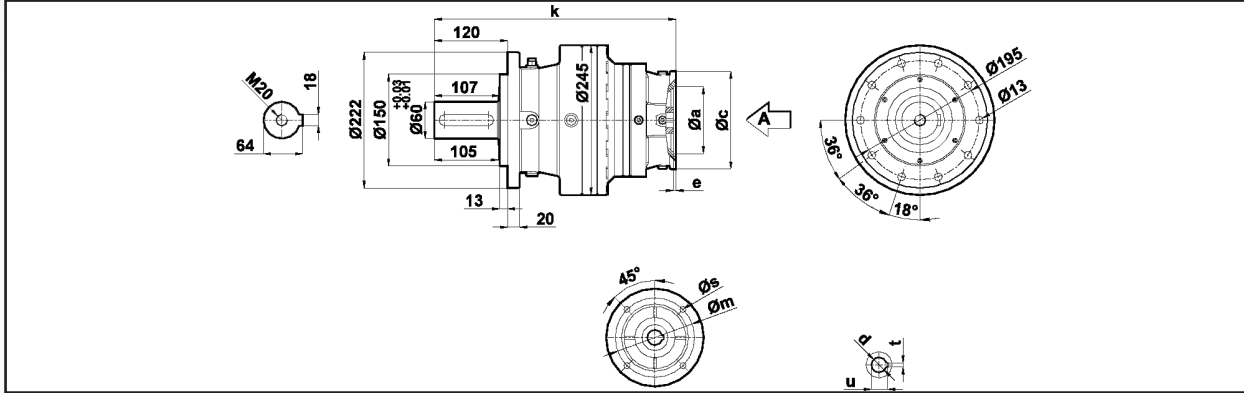
PN	71	80	90	100	112	132
PN1101L.01	284	303	303	313	313	333
PN1102L.01	336	355	355	365	365	385
PN1103L.01	387	406	406	416	416	436
PN1104L.01	439	458	458	468	468	488
a	110	130	130	180	180	230
m	130	165	165	215	215	265
c	160	200	200	250	250	300
e/s	4/10	4/12	4/12	5/15	5/15	5/15
d	14	19	24	28	28	38
t/u	5/16.3	6/21.8	8/27.3	8/31.3	8/31.3	10/41.3



A Bakışı / A View

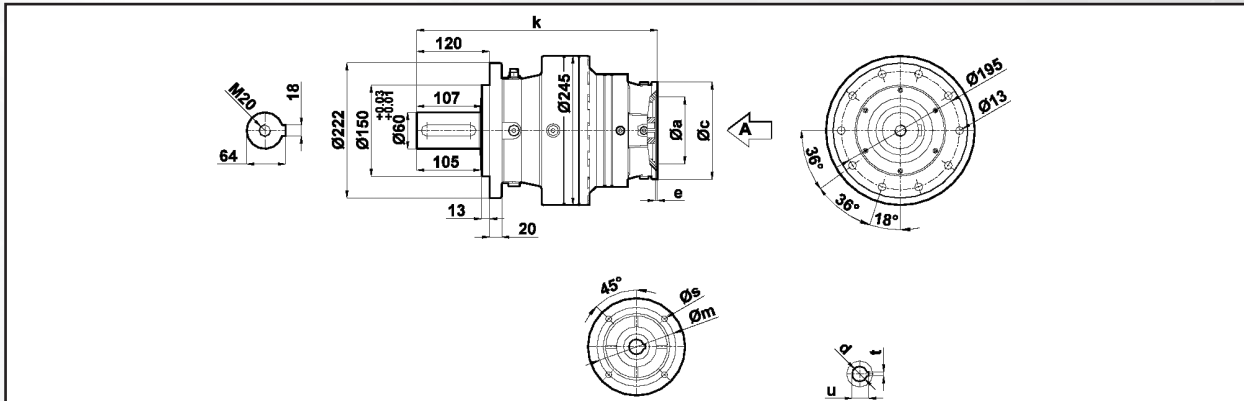
PN	71	80	90	100	112	132
PN1201L.01	304	323	323	333	333	352,5
PN1202L.01	356	375	375	385	385	404,5
PN1203L.01	407	426	426	436	436	455,5
PN1204L.01	459	478	478	488	488	507,5
a	110	130	130	180	180	230
m	130	165	165	215	215	265
c	160	200	200	250	250	300
e/s	4/10	4/12	4/12	5/15	5/15	5/15
d	14	19	24	28	28	38
t/u	5/16.3	6/21.8	8/27.3	8/31.3	8/31.3	10/41.3

# Planet Redüktörler Planetary Gearboxes



A Bakışı / A View

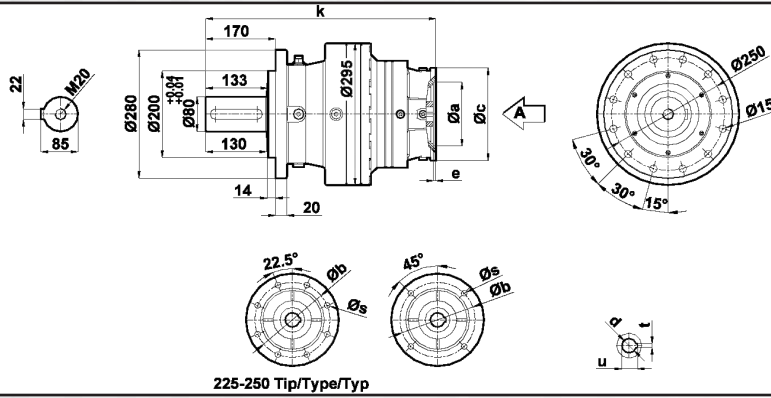
PN	71	80	90	100	112	132	160	180	200
PN1501L.01	-	-	-	-	-	394	425	425	425
PN1502L.01	396	415	415	425	425	445	-	-	-
PN1503L.01	448	467	467	477	477	497	-	-	-
PN1504L.01	499	518	518	528	528	548	-	-	-
a	110	130	130	180	180	230	250	250	300
m	130	165	165	215	215	265	300	300	350
c	160	200	200	250	250	300	350	350	400
e/s	4/10	4/12	4/12	5/15	5/15	5/15	6/19	6/19	6/19
d	14	19	24	28	28	38	42	48	55
t/u	5/16.3	6/21.8	8/27.3	8/31.3	8/31.3	10/41.3	12/45.3	14/51.8	16/59.3



A Bakışı / A View

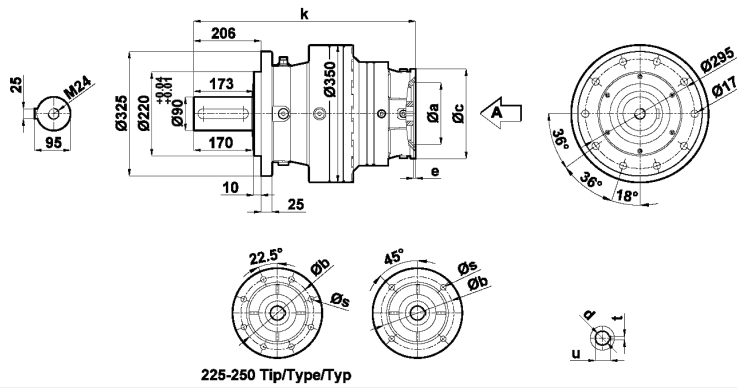
PN	71	80	90	100	112	132	160	180	200
PN1601L.01	-	-	-	-	-	426	457	457	457
PN1602L.01	448	467	467	477	477	497	-	-	-
PN1603L.01	500	519	519	529	529	549	-	-	-
PN1604L.01	551	570	570	580	580	600	-	-	-
a	110	130	130	180	180	230	250	250	300
m	130	165	165	215	215	265	300	300	350
c	160	200	200	250	250	300	350	350	400
e/s	4/10	4/12	4/12	5/15	5/15	5/15	6/19	6/19	6/19
d	14	19	24	28	28	38	42	48	55
t/u	5/16.3	6/21.8	8/27.3	8/31.3	8/31.3	10/41.3	12/45.3	14/51.8	16/59.3

# P Serisi Series



A Bakışı / A View

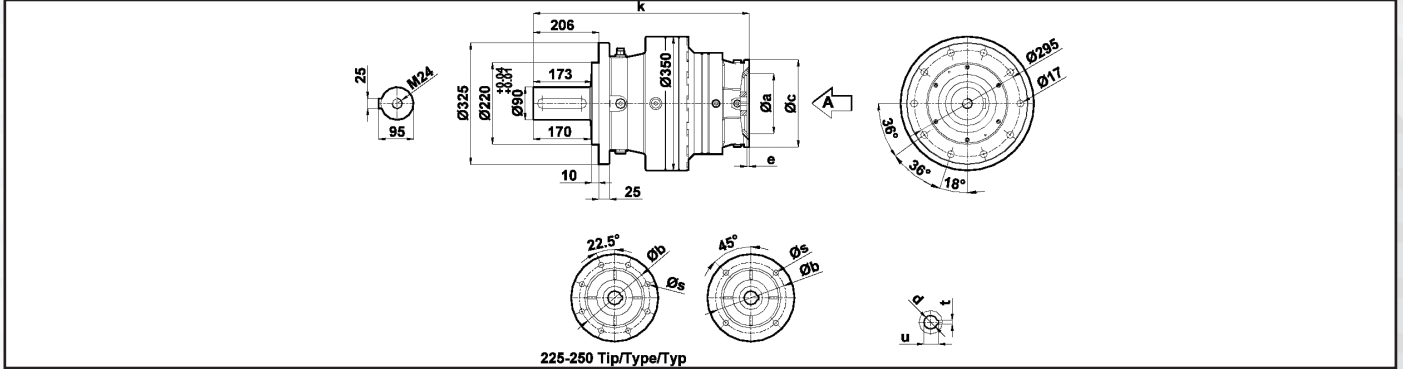
PN	71	80	90	100	112	132	160	180	200	225	250
PN1901L.01	-	-	-	-	-	-	535	535	535	567	567
PN1902L.01	-	-	-	-	-	574	605	605	605	-	-
PN1903L.01	577	596	596	606	606	626	-	-	-	-	-
PN1904L.01	628	570	647	657	657	677	-	-	-	-	-
a	110	130	130	180	180	230	250	250	300	350	450
m	130	165	165	215	215	265	300	300	350	400	500
c	160	200	200	250	250	300	350	350	400	450	550
e/s	4/10	4/12	4/12	5/15	5/15	5/15	6/19	6/19	6/19	6/19	6/19
d	14	19	24	28	28	38	42	48	55	60	65
t/u	5/16.3	6/21.8	8/27.3	8/31.3	8/31.3	10/41.3	12/45.3	14/51.8	16/59.3	18/64.4	18/69.4



A Bakışı / A View

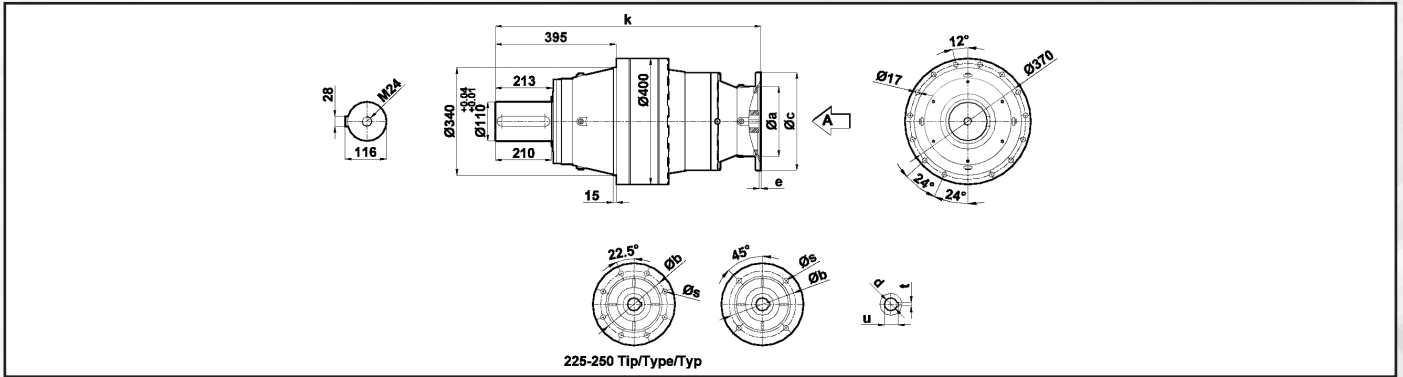
PN	71	80	90	100	112	132	160	180	200	225	250
PN2301L.01	-	-	-	-	-	-	-	616	616	648	648
PN2302L.01	-	-	-	-	-	655	686	686	686	-	-
PN2303L.01	658	677	677	687	687	707	-	-	-	-	-
PN2304L.01	709	728	728	738	738	758	-	-	-	-	-
a	110	130	130	180	180	230	250	250	300	350	450
m	130	165	165	215	215	265	300	300	350	400	500
c	160	200	200	250	250	300	350	350	400	450	550
e/s	4/10	4/12	4/12	5/15	5/15	5/15	6/19	6/19	6/19	6/19	6/19
d	14	19	24	28	28	38	42	48	55	60	65
t/u	5/16.3	6/21.8	8/27.3	8/31.3	8/31.3	10/41.3	12/45.3	14/51.8	16/59.3	18/64.4	18/69.4

# Planet Redüktörler Planetary Gearboxes



A Bakışı / A View

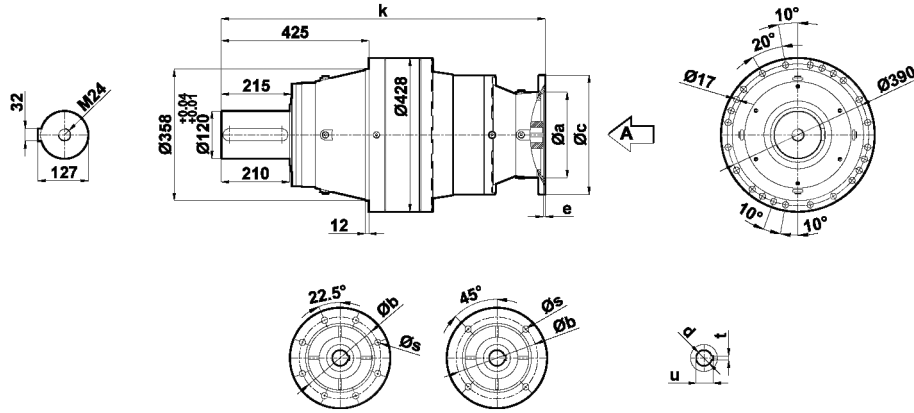
PN	71	80	90	100	112	132	160	180	200	225	250
PN2401L.01	-	-	-	-	-	-	-	668	668	700	700
PN2402L.01	-	-	-	-	-	739	770	770	770	-	-
PN2403L.01	762	781	781	791	791	811	-	-	-	-	-
PN2404L.01	813	832	832	842	842	862	-	-	-	-	-
a	110	130	130	180	180	230	250	250	300	350	450
m	130	165	165	215	215	265	300	300	350	400	500
c	160	200	200	250	250	300	350	350	400	450	550
e/s	4/10	4/12	4/12	5/15	5/15	5/15	6/19	6/19	6/19	6/19	6/19
d	14	19	24	28	28	38	42	48	55	60	65
t/u	5/16.3	6/21.8	8/27.3	8/31.3	8/31.3	10/41.3	12/45.3	14/51.8	16/59.3	18/64.4	18/69.4



A Bakışı / A View

PN	71	80	90	100	112	132	160	180	200	225	250
PN2701L.01	-	-	-	-	-	-	-	-	717	748	748
PN2702L.01	-	-	-	-	-	-	820	820	820	852	852
PN2703L.01	-	-	-	-	-	859	890	890	890	-	-
PN2704L.01	862	881	881	891	891	911	-	-	-	-	-
a	110	130	130	180	180	230	250	250	300	350	450
m	130	165	165	215	215	265	300	300	350	400	500
c	160	200	200	250	250	300	350	350	400	450	550
e/s	4/10	4/12	4/12	5/15	5/15	5/15	6/19	6/19	6/19	6/19	6/19
d	14	19	24	28	28	38	42	48	55	60	65
t/u	5/16.3	6/21.8	8/27.3	8/31.3	8/31.3	10/41.3	12/45.3	14/51.8	16/59.3	18/64.4	18/69.4

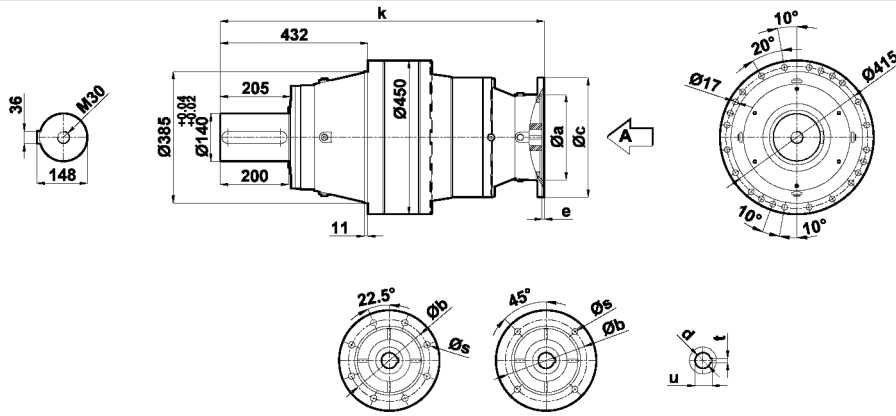
# P Serisi Series



225-250 Tip/Type/Type

A Bakışı / A View

PN	71	80	90	100	112	132	160	180	200	225	250
PN2901L.01	-	-	-	-	-	-	-	-	-	-	-
PN2902L.01	-	-	-	-	-	-	-	870	870	902	902
PN2903L.01	-	-	-	-	-	909	940	940	940	-	-
PN2904L.01	911,5	930,5	930,5	940,5	940,5	960,5	-	-	-	-	-
a	110	130	130	180	180	230	250	250	300	350	450
m	130	165	165	215	215	265	300	300	350	400	500
c	160	200	200	250	250	300	350	350	400	450	550
e/s	4/10	4/12	4/12	5/15	5/15	5/15	6/19	6/19	6/19	6/19	6/19
d	14	19	24	28	28	38	42	48	55	60	65
t/u	5/16.3	6/21.8	8/27.3	8/31.3	8/31.3	10/41.3	12/45.3	14/51.8	16/59.3	18/64.4	18/69.4



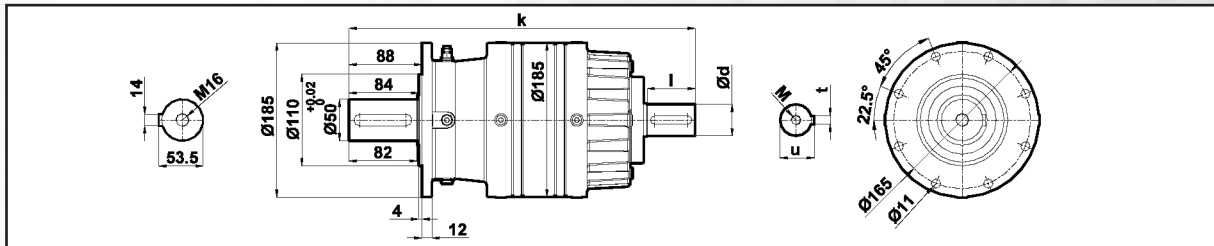
225-250 Tip/Type/Type

A Bakışı / A View

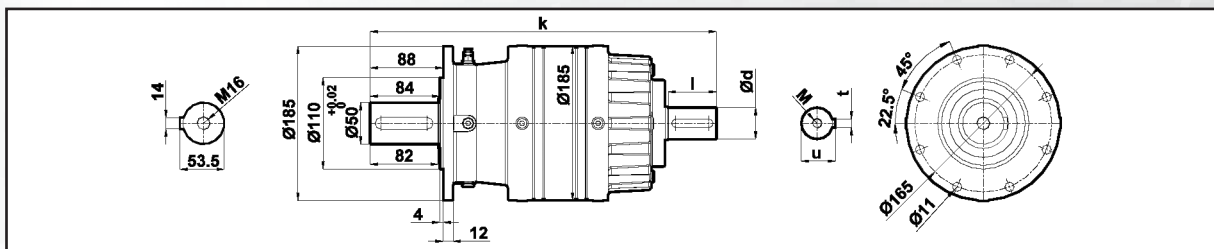
PN	71	80	90	100	112	132	160	180	200	225	250
PN3501L.01	-	-	-	-	-	-	-	-	-	-	-
PN3502L.01	-	-	-	-	-	-	-	978	978	1010	1010
PN3503L.01	-	-	-	-	-	1049	1080	1080	1080	-	-
PN3504L.01	1071	1090	1090	1100	1100	1120	-	-	-	-	-
a	110	130	130	180	180	230	250	250	300	350	450
m	130	165	165	215	215	265	300	300	350	400	500
c	160	200	200	250	250	300	350	350	400	450	550
e/s	4/10	4/12	4/12	5/15	5/15	5/15	6/19	6/19	6/19	6/19	6/19
d	14	19	24	28	28	38	42	48	55	60	65
t/u	5/16.3	6/21.8	8/27.3	8/31.3	8/31.3	10/41.3	12/45.3	14/51.8	16/59.3	18/64.4	18/69.4

# Planet Redüktörler

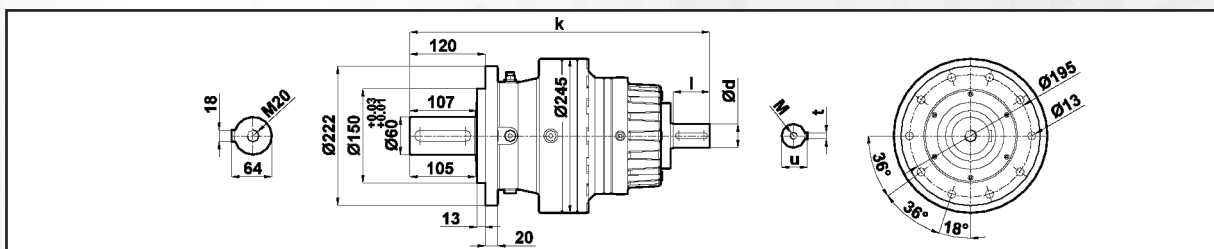
## Planetary Gearboxes



PT	k	d	t	u	l	M
PT1101L.01	365,5	38	10	41	58	M12
PT1102L.01	417,5	38	10	41	58	M12
PT1103L.01	468,5	38	10	41	58	M12
PT1104L.01	520,5	38	10	41	58	M12

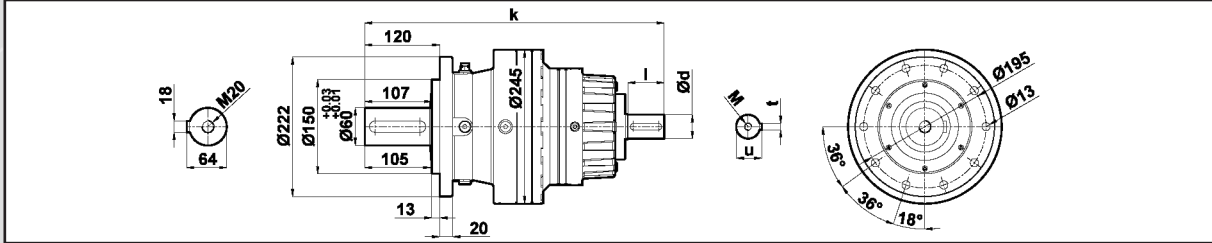


PT	k	d	t	u	l	M
PT1201L.01	385,5	38	10	41	58	M12
PT1202L.01	437,5	38	10	41	58	M12
PT1203L.01	488,5	38	10	41	58	M12
PT1204L.01	540,5	38	10	41	58	M12

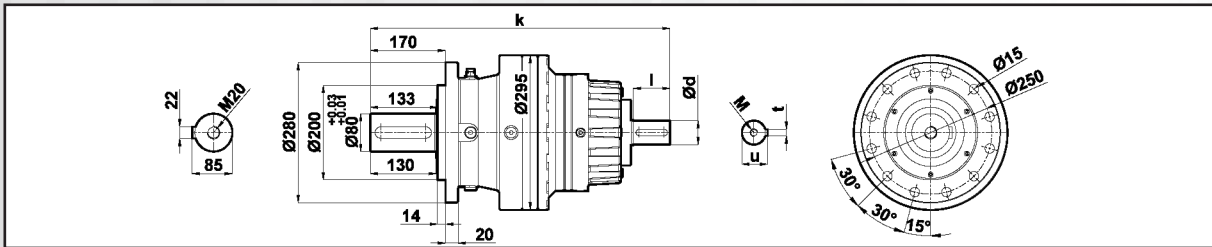


PT	k	d	t	u	l	M
PT1501L.01	510	48	14	52	82	M16
PT1502L.01	478	38	10	41	58	M12
PT1503L.01	530	38	10	41	58	M12
PT1504L.01	581	38	10	41	58	M12

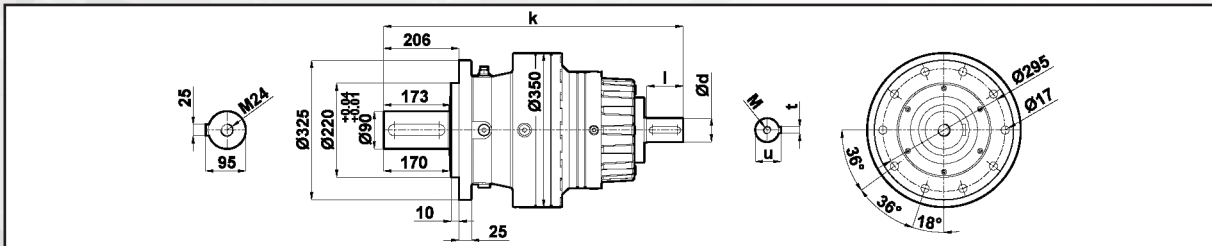
# P Serisi Series



PT	k	d	t	u	l	M
PT1601L.01	542	48	14	52	82	M16
PT1602L.01	530	38	10	41	58	M12
PT1603L.01	582	38	10	41	58	M12
PT1604L.01	633	38	10	41	58	M12



PT	k	d	t	u	l	M
PT1901L.01	672	60	18	64	105	M20
PT1902L.01	690	48	14	52	82	M16
PT1903L.01	659	38	14	52	58	M16
PT1904L.01	710	38	14	52	58	M16

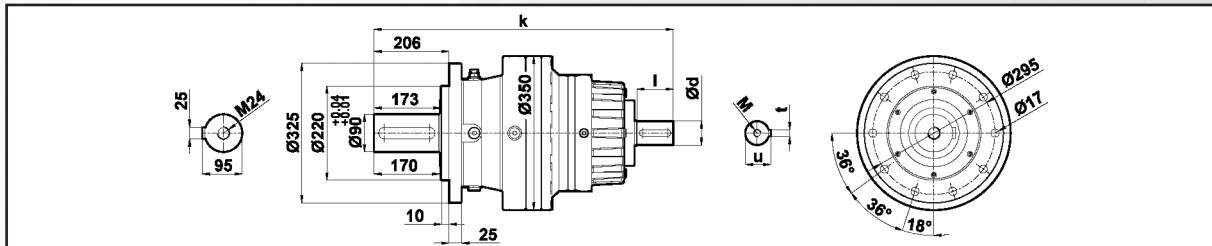


PT	k	d	t	u	l	M
PT2301L.01	758	80	22	85	130	M20
PT2302L.01	771	48	14	52	82	M16
PT2303L.01	740	38	10	41	58	M12
PT2304L.01	791	38	10	41	58	M12

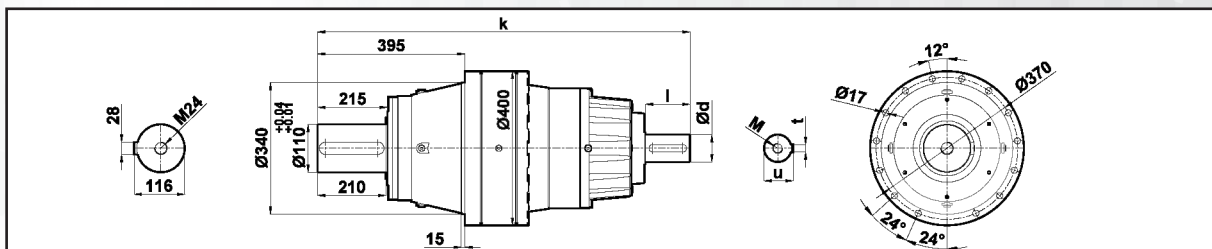


# Planet Redüktörler

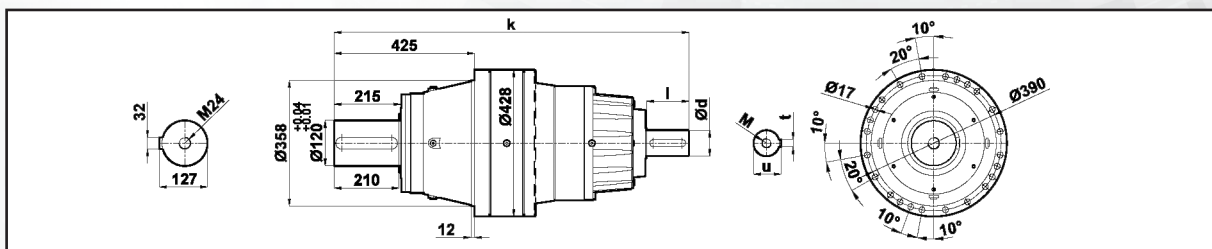
## Planetary Gearboxes



PT	k	d	t	u	l	M
PT2401L.01	810	80	22	85	130	M20
PT2402L.01	855	48	14	52	82	M16
PT2403L.01	844	38	10	41	58	M12
PT2404L.01	895	38	10	41	58	M12

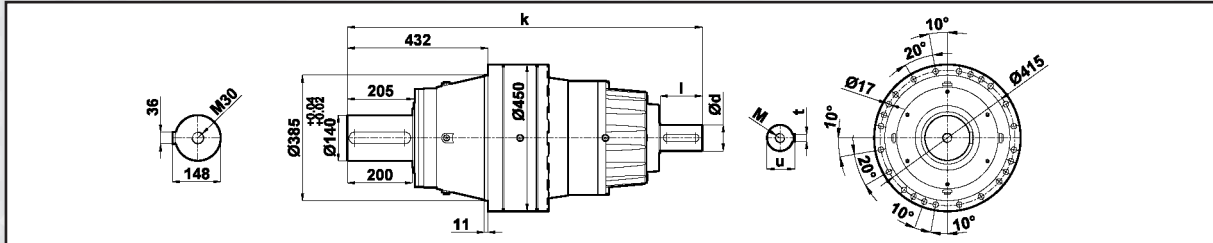


PT	k	d	t	u	l	M
PT2701L.01	875	80	22	85	130	M20
PT2702L.01	957	60	18	64	105	M20
PT2703L.01	975	48	14	52	82	M16
PT2704L.01	944	38	10	41	58	M12

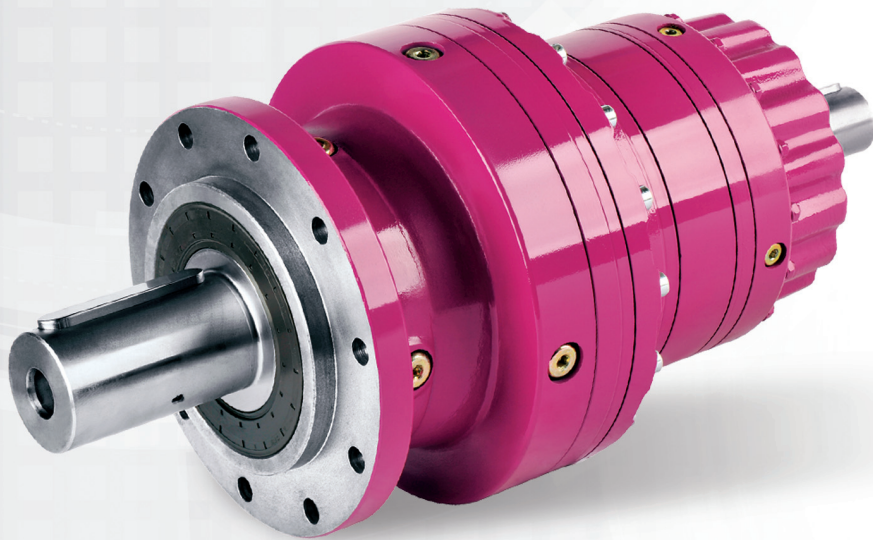


PT	k	d	t	u	l	M
PT2901L.01	1028	80	22	85	130	M20
PT2902L.01	1037	80	22	85	130	M20
PT2903L.01	1050	48	14	52	82	M16
PT2904L.01	1019	38	10	41	58	M12

# P Serisi Series

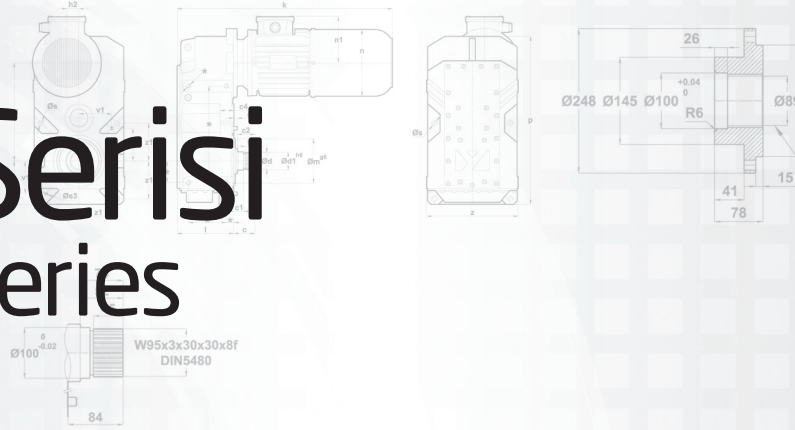


PT	k	d	t	u	l	M
PT3501L.01	931	80	22	85	130	M20
PT3502L.01	1146	80	22	85	130	M20
PT3503L.01	1165	48	14	52	82	M16
PT3504L.01	1153	38	10	41	58	M12

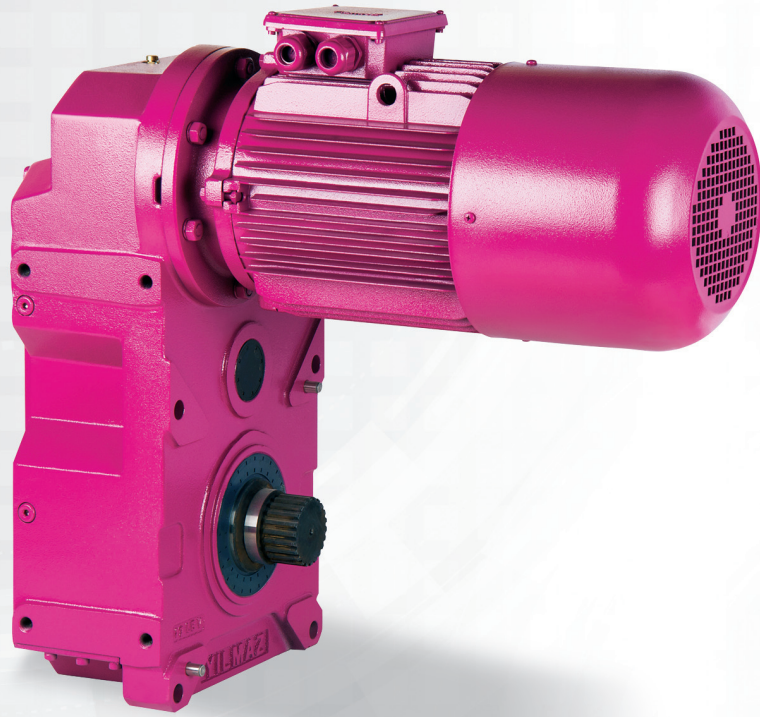




# VR Serisi Series

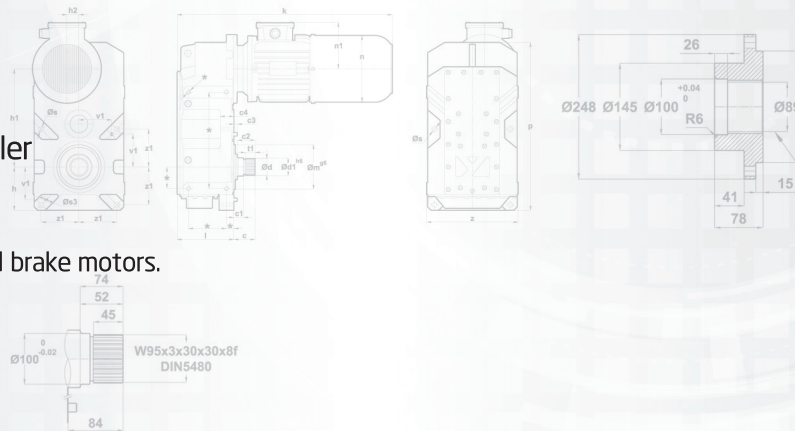


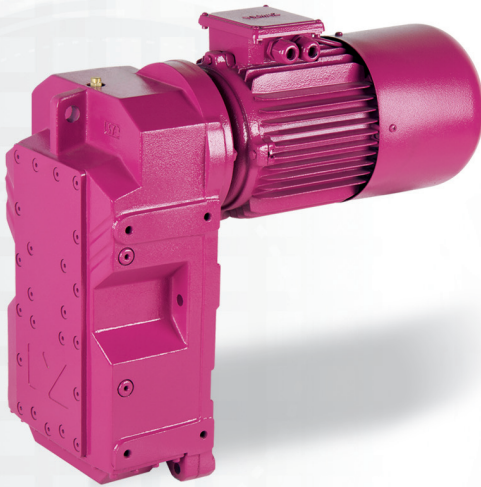
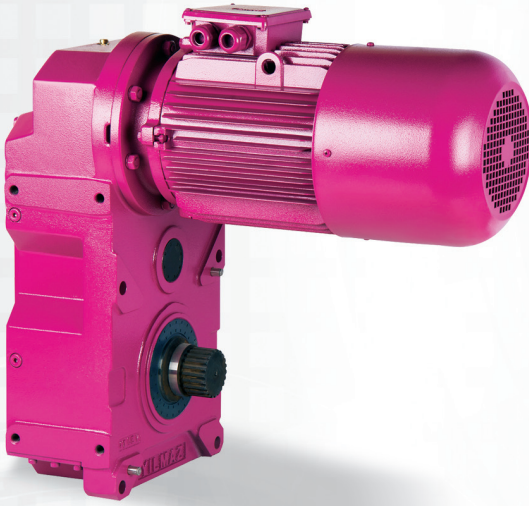
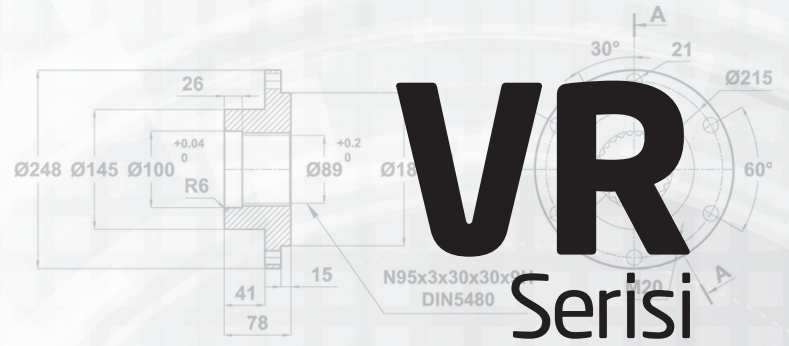
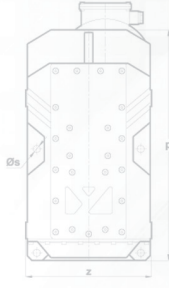
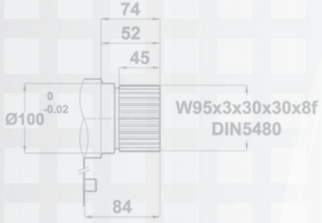
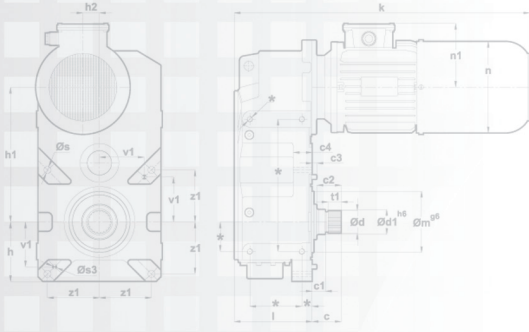
## Vinç Tamburu Tahrik Redüktörü Hoist Drum Drive Units



**5 Farklı Büyüklük,**  
0,5-50 ton aralığı vinçler için  
3 kademeli çift ve tek hızlı frenli redüktörler

**5 Different Sizes,**  
0,5-50 ton weight range for hoists  
3 stages gearboxes with single and double speed brake motors.





## VR Serisi

### Avantajlar:

Benzersiz tasarımı; Monoblok Gövde. Yüksek halat ömrü için büyük tambur kullanılması istenildiğinde, benzer sınıftaki ürünlere göre daha büyük tambur çapı kullanabilme imkanı. Konik masuralı rulmanlar ile yüksek radyal yük taşıma kabiliyeti. Benzer sınıftaki ürünlere göre daha yüksek ISO/FEM sınıflarını karşılayabilme. Civata bağlantısı direkt gövde üzerindeki kulaklardan yapılmaktadır. Uzun saplama veya civata gerekmez. Bağlantı daha rijittir. Elektrik panosunu direkt redüktör üzerine bağlayabilme imkanı. Sektöre özel bağlantı şekli.

### Özellikler:

5 farklı büyüklük. Geniş devir aralığı. 0.5-50 tonaj aralığı. Çift ve tek devirli, frenli motorlarla kullanılabilir. DIN 5480'e göre farklı ölçülerde çıkış mili. GG20-GG22 pik döküm gövde. Farklı montaj pozisyonlarında kullanılabilir. Opsiyonel tambur bağlantı flanşı.

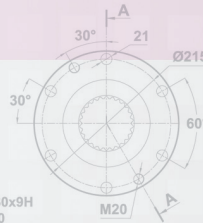
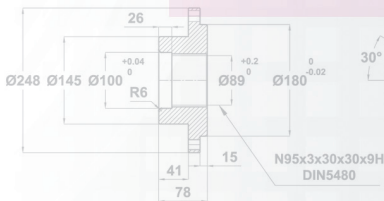
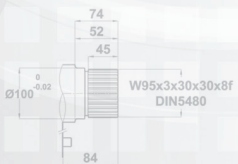
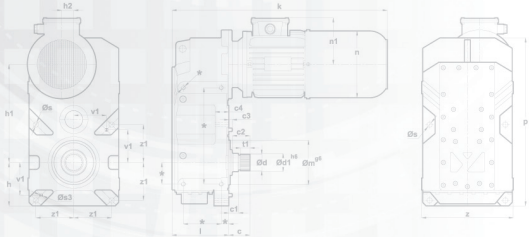
## VR Series

### Advantages:

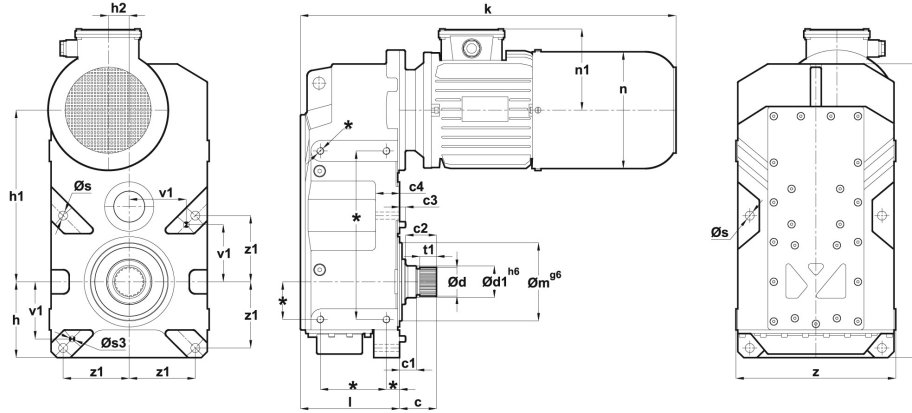
Unique design: Monoblock Housing. Possibility of using larger drums compared to similar size of products to achieve longer rope service life. Capability of withstanding high radial loads with taper roller bearings. Designed for higher ISO/FEM load classifications compared to similar size of products. Easy connection holes for shorter bolts and more rigid mounting. Power panel can be mounted directly on the drive unit. Industry-specific connection types.

### Specifications:

5 different sizes. Wide speed range. 0.5-50 tones load range. Designed for double and single according to DIN5480. GG20-GG22 cast iron housing. Suitable for different mounting positions. Optional drum connection flange.



# VR Serisi Series



VR	Dış Boyutlar Dimensions of Outline				Montaj Ölçüleri Dimensions for Mounting					Mil Ölçüleri Dimensions of Shaft					
	z/p	k	n/n1	h/h1	h2/l	m	s/s3	v1/z1	c3/c4	c	c1/c2	d	d1	t1	
VR373.1K	71	218 401	477	138/111	106 231	20 145	Ø110 (g6)	Ø13 Ø8	75 90	15 39	55	22 48	W45x2x30x21x8f DIN5480	Ø50 (h6)	28
	80		506	156/118											
	90S		538	176/126											
	90L		563	176/126											
	100L		614	194/135											
	112M		637	218/146											
	132S		698	257/168											
VR473.1K	90S	266 488	551	176/126	126 285	35 166	Ø130 (g6)	Ø15 Ø10	95 110	15 44	60,5	27 51,5	W50x2x30x24x8f DIN5480	Ø55 (h6)	28
	90L		576	176/126											
	100L		626	194/135											
	112M		649	218/146											
	132S		713	258/168											
	132M		751	258/168											
	160M		851	310/325											
VR573.1K	90L	326 614	603	176/126	159 355	50 199	Ø160 (g6)	Ø19 Ø16	115 140	15 53	69	28 61	W70x3x30x22x8f DIN5480	Ø75 (h6)	35
	100L		651	194/135											
	112M		677	218/146											
	132S		736	258/168											
	132M		774	258/168											
	160M		874	310/225											
	160L		918	310/225											
	180M		935	348/241											
	180L		973	348/241											
VR673.1K	100L	400 728	681	194/135	200 415	60 235	Ø200 (g6)	Ø20 Ø20	132.5 157.5	20 55	84	32 74	W95x3x30x30x8f DIN5480	Ø100 (h6)	45
	112M		704	218/146											
	132S		768	258/168											
	132M		806	258/168											
	160M		906	310/225											
	160L		950	310/225											
	180M		966	348/241											
	180L		1004	348/241											
	200L		1073	390/275											
VR773.1K	132S	460 815	800	258/168	225 465	80 275	Ø230 (g6)	Ø22 Ø30	160 187.5	20 59	110	35 97	W110x4x30x26x8f DIN5480	Ø115 (h6)	67
	132M		838	258/168											
	160M		937	310/225											
	160L		981	310/225											
	180M		995	348/241											
	180L		1033	348/241											
	200L		1105	390/275											
	225S		1121	434/285											
	225M		1146	434/285											

